



SZABO SCANDIC

Part of Europa Biosite

Produktinformation



Forschungsprodukte & Biochemikalien



Zellkultur & Verbrauchsmaterial



Diagnostik & molekulare Diagnostik



Laborgeräte & Service

Weitere Information auf den folgenden Seiten!
See the following pages for more information!



Lieferung & Zahlungsart

siehe unsere [Liefer- und Versandbedingungen](#)

Zuschläge

- Mindermengenzuschlag
- Trockeneiszuschlag
- Gefahrgutzuschlag
- Expressversand

SZABO-SCANDIC HandelsgmbH

Quellenstraße 110, A-1100 Wien

T. +43(0)1 489 3961-0

F. +43(0)1 489 3961-7

mail@szabo-scandic.com

www.szabo-scandic.com

[linkedin.com/company/szaboscandic](https://www.linkedin.com/company/szaboscandic) 

DDX20 Antibody

Rabbit Polyclonal

Antigen Affinity Purified

Protein ID NP_009135.3

Catalog No. A300-651A-T

GenelD 11218

Lot No. A300-651A-T-1

APPLICATIONS WB, IP

SPECIES REACTIVITY Human

AMOUNT 10 µl

CONCENTRATION 200 µg/ml

STORAGE/SHELF LIFE 2 – 8°C / 1 year from date of receipt

PHYSICAL STATE Liquid

BUFFER Tris-buffered Saline containing 0.1% BSA and 0.09% Sodium Azide

ISOTYPE IgG

ORIGIN USA

PRODUCTION PROCEDURES Antibody was affinity purified using an epitope specific to DDX20 immobilized on solid support.

The epitope recognized by A300-651A-T maps to a region between residues 675 and 725 of human DEAD (Asp-Glu-Ala-Asp) Box 20 using the numbering given in entry NP_009135.3 (GenelD 11218).

APPLICATIONS Centrifuge tube to remove product from lid. Optimal working dilutions should be determined experimentally by the investigator. Prepare working dilution immediately before use.

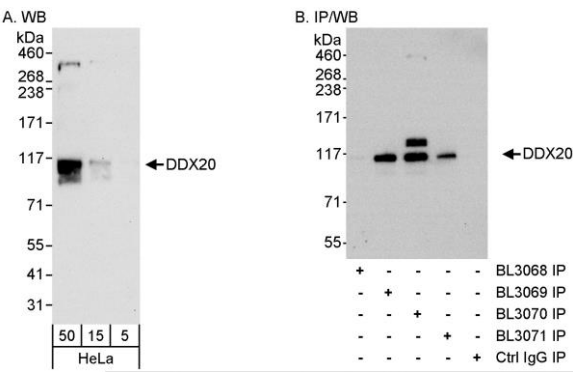
Western Blot 1:1,000 – 1:10,000

Immunoprecipitation 1 – 4 µg/mg lysate

ADDITIONAL INFO <https://www.bethyl.com/product/A300-651A-T>

Use the link above to view SDS, a current list of citations, and other product specific information.
IP-western blot protocol: https://www.bethyl.com/content/protocol_IP_WB

This document certifies that this product has met all of the quality control standards defined by Bethyl Laboratories, Inc.
Michael Spencer, PhD Date: June 6, 2022



Detection of human DDX20 by western blot and immunoprecipitation. *Samples:* Whole cell lysate (5, 15 and 50 µg for WB; 1 mg for IP) from HeLa cells. *Antibodies:* Affinity purified rabbit anti-DDX20 antibody (Cat. No. A300-651A) used for WB at 0.04 µg/ml (A) and 1 µg/ml (B) and used for IP at 3 µg/mg lysate. DDX20 was also immunoprecipitated using rabbit anti-DDX20 antibodies BL3068, BL3069 (Cat. No. A300-650A) and BL3071, each of which recognizes a different site on DDX20. *Detection:* Chemiluminescence with exposure times of 30 seconds (A) and 10 seconds (B).