



SZABO SCANDIC

Part of Europa Biosite

Produktinformation



Forschungsprodukte & Biochemikalien



Zellkultur & Verbrauchsmaterial



Diagnostik & molekulare Diagnostik



Laborgeräte & Service

Weitere Information auf den folgenden Seiten!
See the following pages for more information!



Lieferung & Zahlungsart

siehe unsere [Liefer- und Versandbedingungen](#)

Zuschläge

- Mindermengenzuschlag
- Trockeneiszuschlag
- Gefahrgutzuschlag
- Expressversand

SZABO-SCANDIC Handels GmbH

Quellenstraße 110, A-1100 Wien

T. +43(0)1 489 3961-0

F. +43(0)1 489 3961-7

mail@szabo-scandic.com

www.szabo-scandic.com

[linkedin.com/company/szaboscandic](https://www.linkedin.com/company/szaboscandic) 

Phospho 53BP1 (S25) Antibody

Rabbit Polyclonal

Antigen Affinity Purified Protein ID NP_005648.1

Catalog No. A300-652A-T GenelD 7158

Lot No. A300-652A-T-2

APPLICATIONS	WB, IP, IHC
SPECIES REACTIVITY	Human, Mouse
AMOUNT	10 µl
CONCENTRATION	200 µg/ml
STORAGE/SHELF LIFE	2 – 8°C / 1 year from date of receipt
PHYSICAL STATE	Liquid
BUFFER	Tris-buffered Saline containing 0.1% BSA and 0.09% Sodium Azide
ISOTYPE	IgG
ORIGIN	USA
PRODUCTION PROCEDURES	Antibody was affinity purified using an epitope specific to Phospho 53BP1 immobilized on solid support.

Immunogen for A300-652A-T was a phosphorylated synthetic peptide, which represented a portion of human p53 Binding Protein 1 (GenelD 7158) around serine 25 according to the numbering given in entry NP_005648.1.

APPLICATIONS Centrifuge tube to remove product from lid. Optimal working dilutions should be determined experimentally by the investigator. Prepare working dilution immediately before use.

Western Blot 1:2,000 – 1:10,000

Immunoprecipitation 1 – 4 µg/mg lysate

Immunohistochemistry 1:1,000 – 1:5,000. Epitope retrieval with citrate buffer pH 6.0 is recommended for FFPE tissue sections.

ADDITIONAL INFO <https://www.bethyl.com/product/A300-652A-T>

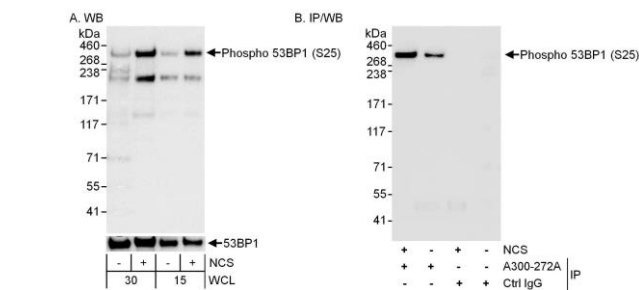
Use the link above to view SDS, a current list of citations, and other product specific information.

IP-western blot protocol: https://www.bethyl.com/content/protocol_IP_WB

This document certifies that this product has met all of the quality control standards defined by Bethyl Laboratories, Inc.

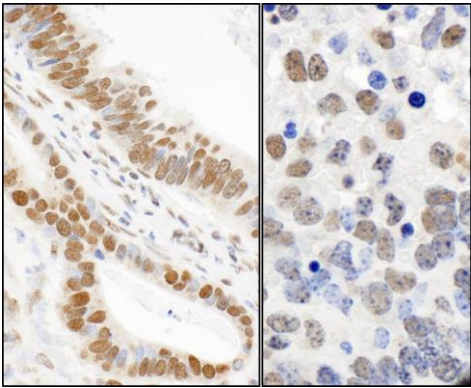
Michael Spencer, PhD

Date: June 6, 2022



Detection of Phospho 53BP1 (S25) by western blot.

Samples: Whole cell lysate (30 µg or 15 µg for WB; 1 mg for IP, 20% of IP loaded) from HEK293T cells that were mock treated or treated with NCS (200 ng/ml; 1 h). **Antibodies:** Affinity purified rabbit anti-Phospho 53BP1 antibody A300-652A (lot no. A300-652A-2) at 0.04 µg/ml (A) and 0.1 µg/ml (B) for WB. 53BP1 was immunoprecipitated using affinity purified rabbit anti-53BP1 antibody A300-272A. **Detection:** Chemiluminescence with exposure times of 3 seconds (A and B).



Detection of human and mouse Phospho 53BP1 (S25) by immunohistochemistry.

Sample: FFPE sections of human stomach carcinoma (left) and mouse teratoma (right). **Antibody:** Affinity purified rabbit anti-Phospho 53bp1 (S25) (Cat. No. A300-652A Lot2) used at a dilution of 1:1,000 (1 µg/ml). **Detection:** DAB