



SZABO SCANDIC

Part of Europa Biosite

Produktinformation



Forschungsprodukte & Biochemikalien



Zellkultur & Verbrauchsmaterial



Diagnostik & molekulare Diagnostik



Laborgeräte & Service

Weitere Information auf den folgenden Seiten!
See the following pages for more information!



Lieferung & Zahlungsart

siehe unsere [Liefer- und Versandbedingungen](#)

Zuschläge

- Mindermengenzuschlag
- Trockeneiszuschlag
- Gefahrgutzuschlag
- Expressversand

SZABO-SCANDIC HandelsgmbH

Quellenstraße 110, A-1100 Wien

T. +43(0)1 489 3961-0

F. +43(0)1 489 3961-7

mail@szabo-scandic.com

www.szabo-scandic.com

[linkedin.com/company/szaboscandic](https://www.linkedin.com/company/szaboscandic)



Phospho 53BP1 (S25) Antibody

Rabbit Polyclonal

Antigen Affinity Purified

Protein ID NP_005648.1

Catalog No. A300-652A

GeneID 7158

Lot No. A300-652A-2



| | |
|------------------------------|---|
| APPLICATIONS | WB, IP, IHC |
| SPECIES REACTIVITY | Human, Mouse |
| AMOUNT | 100 µl |
| CONCENTRATION | 200 µg/ml |
| STORAGE/SHELF LIFE | 2 – 8° C / 1 year from date of receipt |
| PHYSICAL STATE | Liquid |
| BUFFER | Tris-buffered Saline containing 0.1% BSA and 0.09% Sodium Azide |
| ISOTYPE | IgG |
| ORIGIN | USA |
| PRODUCTION PROCEDURES | Antibody was affinity purified using an epitope specific to Phospho 53BP1 immobilized on solid support. |

Immunogen for A300-652A was a phosphorylated synthetic peptide, which represented a portion of human p53 Binding Protein 1 (GeneID 7158) around serine 25 according to the numbering given in entry NP_005648.1.

Immunoglobulin concentration was determined by extinction coefficient: absorbance at 280 nm of 1.4 equals 1.0 mg of IgG.

APPLICATIONS Centrifuge tube to remove product from lid. Optimal working dilutions should be determined experimentally by the investigator. Prepare working dilution immediately before use.

Western Blot 1:2,000 – 1:10,000

Immunoprecipitation 1 – 4 µg/mg lysate

Immunohistochemistry 1:1,000 – 1:5,000. Epitope retrieval with citrate buffer pH 6.0 is recommended for FFPE tissue sections.

APPLICATION NOTES Western blot of immunoprecipitates performed using Normal Pig Serum (Cat. No. S100-020), Goat anti-Rabbit Light Chain HRP Conjugate (Cat. No. A120-113P) and 4-8% SDS-PAGE (link to IP-western blot protocol in Additional Info section below).

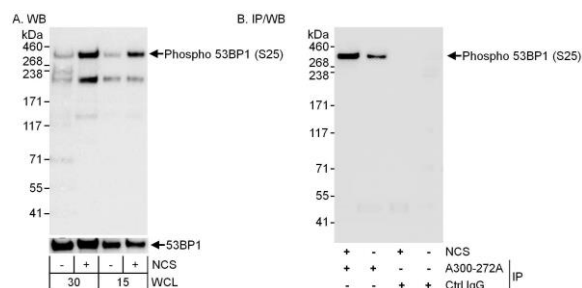
IHC HUMAN CONTROLS Western blot of lysates performed using standard western blot reagents and 4-8% SDS-PAGE. Breast Carcinoma, Colon Carcinoma, Ovarian Carcinoma, Prostate Carcinoma, Stomach Adenocarcinoma, Testicular Seminoma

IHC MOUSE CONTROLS Renal Cell Carcinoma, Teratoma

ADDITIONAL INFO <https://www.bethyl.com/product/A300-652A>

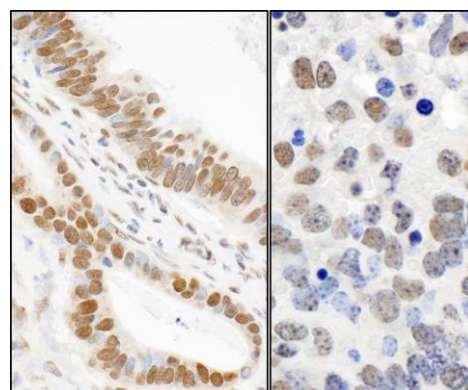
Use the link above to view SDS, a current list of citations, and other product specific information. IP-western blot protocol: https://www.bethyl.com/content/protocol_IP_WB

This document certifies that this product has met all of the quality control standards defined by Bethyl Laboratories, Inc.
Eric McIntush, PhD | Chief Scientific Officer Date: June 21, 2019



Detection of Phospho 53BP1 (S25) by western blot.

Samples: Whole cell lysate (30 µg or 15 µg for WB; 1 mg for IP, 20% of IP loaded) from HEK293T cells that were mock treated or treated with NCS (200 ng/ml; 1h). **Antibodies:** Affinity purified rabbit anti-Phospho 53BP1 antibody A300-652A (lot no. A300-652A-2) at 0.04 µg/ml (A) and 0.1 µg/ml (B) for WB. 53BP1 was immunoprecipitated using affinity purified rabbit anti-53BP1 antibody A300-272A. **Detection:** Chemiluminescence with exposure times of 3 seconds (A and B).



Detection of human and mouse Phospho 53BP1 (S25) by immunohistochemistry.

Sample: FFPE sections of human stomach carcinoma (left) and mouse teratoma (right). **Antibody:** Affinity purified rabbit anti- Phospho 53bp1 (S25) (Cat. No. A300-652A Lot2) used at a dilution of 1:1,000 (1µg/ml). **Detection:** DAB