



SZABO SCANDIC

Part of Europa Biosite

Produktinformation



Forschungsprodukte & Biochemikalien



Zellkultur & Verbrauchsmaterial



Diagnostik & molekulare Diagnostik



Laborgeräte & Service

Weitere Information auf den folgenden Seiten!
See the following pages for more information!



Lieferung & Zahlungsart

siehe unsere [Liefer- und Versandbedingungen](#)

Zuschläge

- Mindermengenzuschlag
- Trockeneiszuschlag
- Gefahrgutzuschlag
- Expressversand

SZABO-SCANDIC HandelsgmbH

Quellenstraße 110, A-1100 Wien

T. +43(0)1 489 3961-0

F. +43(0)1 489 3961-7

mail@szabo-scandic.com

www.szabo-scandic.com

[linkedin.com/company/szaboscandic](https://www.linkedin.com/company/szaboscandic) 

RNA Polymerase II Antibody

Rabbit Polyclonal

Antigen Affinity Purified

Protein ID NP_000928.1

Catalog No. A300-653A

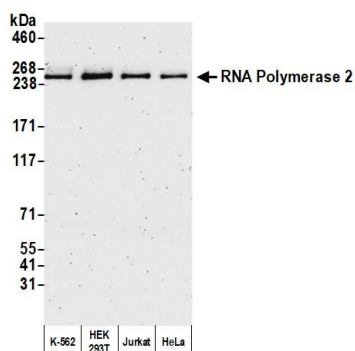
GeneID 5430

Lot No. A300-653A-4



APPLICATIONS	WB, IP
SPECIES REACTIVITY	Human, Mouse
AMOUNT	100 µl
CONCENTRATION	200 µg/ml
STORAGE/SHELF LIFE	2 – 8° C / 1 year from date of receipt
PHYSICAL STATE	Liquid
BUFFER	Tris-buffered Saline containing 0.1% BSA and 0.09% Sodium Azide
ISOTYPE	IgG
ORIGIN	USA
PRODUCTION PROCEDURES	<p>Antibody was affinity purified using an epitope specific to RNA Polymerase II immobilized on solid support.</p> <p>The epitope recognized by A300-653A maps to the C-terminal repeat of human RNA Polymerase II (GeneID 5430).</p> <p>Immunoglobulin concentration was determined by extinction coefficient: absorbance at 280 nm of 1.4 equals 1.0 mg of IgG.</p>
APPLICATIONS	<p>Centrifuge tube to remove product from lid. Optimal working dilutions should be determined experimentally by the investigator. Prepare working dilution immediately before use.</p> <p>Western Blot 1:2,000 – 1:10,000</p> <p>Immunoprecipitation 2 – 10 µg/mg lysate</p>
ADDITIONAL INFO	<p>https://www.bethyl.com/product/A300-653A</p> <p>Use the link above to view SDS, a current list of citations, and other product specific information.</p> <p>IP-western blot protocol: https://www.bethyl.com/content/protocol_IP_WB</p>

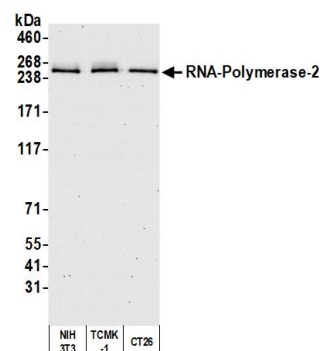
This document certifies that this product has met all of the quality control standards defined by Bethyl Laboratories, Inc.
Eric McIntush, PhD | Chief Scientific Officer Date: October 16, 2020

**Detection of human RNA-Polymerase-2 by western blot.**

Samples: Whole cell lysate (10 µg) from K-562, HEK293T, Jurkat, and HeLa cells prepared using NETN lysis buffer.

Antibody: Affinity purified rabbit anti-RNA-Polymerase-2 antibody A300-653A (lot A300-653A-4) used for WB at 0.04 µg/ml.

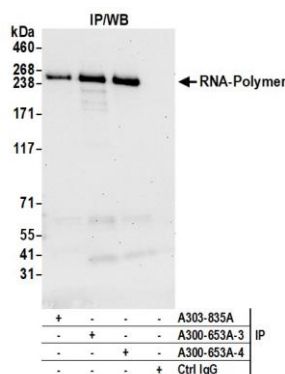
Detection: Chemiluminescence with an exposure time of 3 minutes.

**Detection of mouse RNA-Polymerase-2 by western blot.**

Samples: Whole cell lysate (10 µg) from NIH 3T3, TCMK-1, and CT26 cells prepared using NETN lysis buffer.

Antibody: Affinity purified rabbit anti-RNA-Polymerase-2 antibody A300-653A (lot A300-653A-4) used for WB at 0.04 µg/ml.

Detection: Chemiluminescence with an exposure time of 75 seconds.

**Detection of human RNA-Polymerase-2 by western blot**

of immunoprecipitates. *Samples:* Whole cell lysate (1.0 mg per IP reaction; 20% of IP loaded) from HeLa cells prepared using NETN lysis buffer. *Antibodies:* Affinity purified rabbit anti-RNA-Polymerase-2 antibody A300-653A (lot A300-653A-4) used for IP at 6 µg per reaction. RNA-Polymerase-2 was also immunoprecipitated by a previous lot of this antibody (lot A300-653A-3) and rabbit anti-RNA-Polymerase-2 antibody A303-835A. For blotting immunoprecipitated RNA-Polymerase-2, A300-653A was used at 0.04 µg/ml. *Detection:* Chemiluminescence with an exposure time of 30 seconds.