



SZABO SCANDIC

Part of Europa Biosite

Produktinformation



Forschungsprodukte & Biochemikalien



Zellkultur & Verbrauchsmaterial



Diagnostik & molekulare Diagnostik



Laborgeräte & Service

Weitere Information auf den folgenden Seiten!
See the following pages for more information!



Lieferung & Zahlungsart

siehe unsere [Liefer- und Versandbedingungen](#)

Zuschläge

- Mindermengenzuschlag
- Trockeneiszuschlag
- Gefahrgutzuschlag
- Expressversand

SZABO-SCANDIC Handels GmbH

Quellenstraße 110, A-1100 Wien

T. +43(0)1 489 3961-0

F. +43(0)1 489 3961-7

mail@szabo-scandic.com

www.szabo-scandic.com

[linkedin.com/company/szaboscandic](https://www.linkedin.com/company/szaboscandic) 

Phospho RNA Polymerase II (S2) Antibody

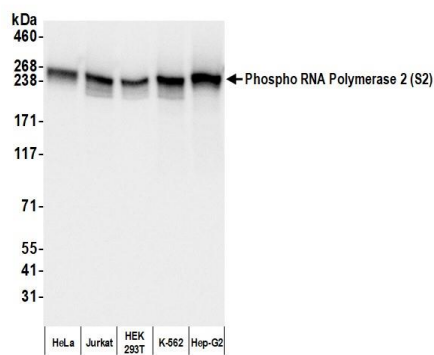
Rabbit Polyclonal

Antigen Affinity Purified	RefSeq ID	NP_000928.1
Catalog No. A300-654A	Uniprot ID	P24928
Lot No. 4	GeneID	5430

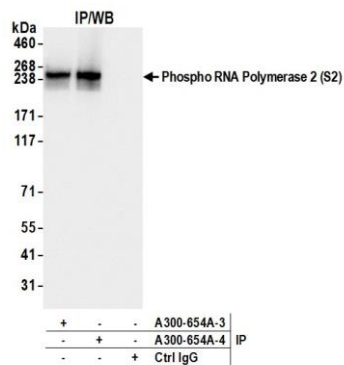
APPLICATIONS	WB, IP, IHC						
SPECIES REACTIVITY	Human, Mouse						
PRESUMED REACTIVITY	Based on 100% sequence identity, this antibody is predicted to react with D. melanogaster						
AMOUNT	100 µl						
CONCENTRATION	200 µg/ml						
STORAGE/SHELF LIFE	2 – 8°C / 1 year from date of receipt						
PHYSICAL STATE	Liquid						
BUFFER	Tris-buffered Saline containing 0.1% BSA and 0.09% Sodium Azide						
ISOTYPE	IgG						
ORIGIN	USA						
PRODUCTION PROCEDURES	<p>Antibody was affinity purified using an epitope specific to Phospho RNA Polymerase II (S2) immobilized on solid support.</p> <p>Immunogen for A300-654A was a phosphorylated synthetic peptide, which represented a portion of human RNA Polymerase II (GeneID 5430) around serine 2 of the C-terminal repeat YSPTSPS.</p> <p>Immunoglobulin concentration was determined using Beer’s Law where 1mg/mL IgG has an A280 of 1.4.</p>						
APPLICATIONS	<p>Centrifuge tube to remove product from lid. Optimal working dilutions should be determined experimentally by the investigator. Prepare working dilution immediately before use.</p> <table><tr><td>Western Blot</td><td>1:2000 – 1:10,000 (3–8% Tris–acetate gel recommended)</td></tr><tr><td>Immunoprecipitation</td><td>6 µg/mg lysate</td></tr><tr><td>Immunohistochemistry</td><td>1:500 to 1:2,000. Epitope retrieval with citrate buffer pH6.0 is recommended for FFPE tissue sections.</td></tr></table>	Western Blot	1:2000 – 1:10,000 (3–8% Tris–acetate gel recommended)	Immunoprecipitation	6 µg/mg lysate	Immunohistochemistry	1:500 to 1:2,000. Epitope retrieval with citrate buffer pH6.0 is recommended for FFPE tissue sections.
Western Blot	1:2000 – 1:10,000 (3–8% Tris–acetate gel recommended)						
Immunoprecipitation	6 µg/mg lysate						
Immunohistochemistry	1:500 to 1:2,000. Epitope retrieval with citrate buffer pH6.0 is recommended for FFPE tissue sections.						
IHC HUMAN CONTROLS	Breast Carcinoma, Colon Carcinoma, Ovarian Carcinoma, Prostate Carcinoma, Stomach Adenocarcinoma, Testicular Seminoma						
IHC MOUSE CONTROLS	Intestine, Renal Cell Carcinoma, Squamous Cell Carcinoma, Teratoma						
ADDITIONAL INFO	<p>https://www.fortislifesciences.com/p/A300-654A</p> <p>Use the link above to view SDS, a current list of citations, and other product specific information.</p>						

This document certifies that this product has met all of the quality control standards defined by Bethyl Laboratories, Inc.
Michael Spencer, PhD

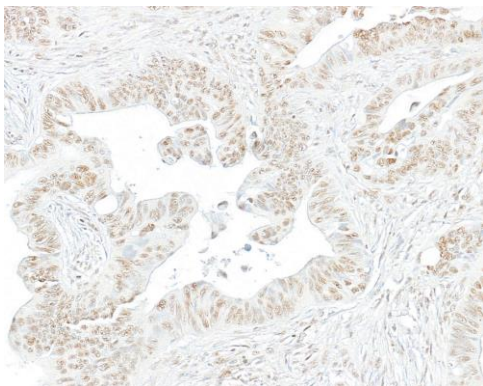
Date: April 3, 2024



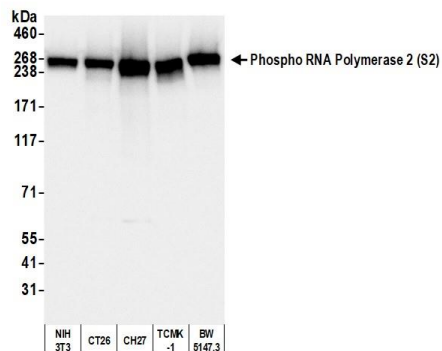
Detection of human Phospho RNA Polymerase 2 (S2) by western blot. *Samples:* Whole cell lysate (10 µg) from HeLa, Jurkat, HEK293T, K-562, and Hep-G2 cells prepared using NETN lysis buffer. *Antibody:* Affinity purified rabbit anti-Phospho RNA Polymerase 2 (S2) antibody (A300-654A lot 4) used for WB at 0.04 µg/ml. *Detection:* Chemiluminescence with an exposure time of 1 second.



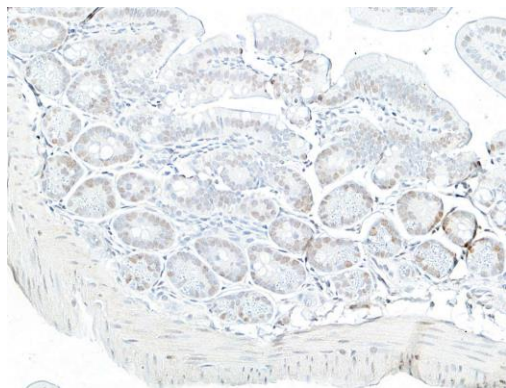
Detection of human Phospho RNA Polymerase 2 (S2) by western blot of immunoprecipitates. *Samples:* Whole cell lysate (1 mg per IP; 10% of IP loaded) from HEK293T cells prepared using NETN lysis buffer. *Antibodies:* Affinity purified rabbit anti-Phospho RNA Polymerase 2 (S2) antibody (A300-654A lot 4) used for IP at 6 µg per reaction. Phospho RNA Polymerase 2 (S2) was also immunoprecipitated by a previous lot of this antibody (A300-654A lot 3). For blotting immunoprecipitated Phospho RNA Polymerase 2 (S2), A300-654A was used at 0.04 µg/ml. *Detection:* Chemiluminescence with an exposure time of 1 second.



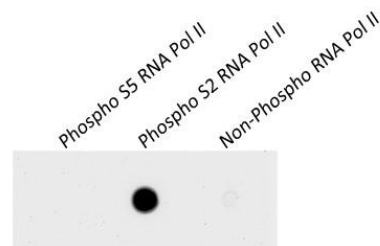
Detection of human Phospho RNA Polymerase II (S2) by immunohistochemistry. *Sample:* FFPE section of human colon carcinoma. *Antibody:* Affinity purified rabbit anti-Phospho-RNA Polymerase II (S2) (A300-654A). *Secondary:* HRP-conjugated goat anti-rabbit IgG (A120-501P).



Detection of mouse Phospho RNA Polymerase 2 (S2) by western blot. *Samples:* Whole cell lysate (10 µg) from NIH 3T3, CT26, CH27, TCMK-1, and BW5147.3 cells prepared using NETN lysis buffer. *Antibody:* Affinity purified rabbit anti-Phospho RNA Polymerase 2 (S2) antibody (A300-654A lot 4) used for WB at 0.04 µg/ml. *Detection:* Chemiluminescence with an exposure time of 3 seconds.



Detection of mouse Phospho RNA Polymerase II (S2) by immunohistochemistry. *Sample:* FFPE section of mouse intestine. *Antibody:* Affinity purified rabbit anti-Phospho-RNA Polymerase II (S2) (A300-654A). Secondary: HRP-conjugated goat anti-rabbit IgG (A120-501P).



Detection of Phospho RNA Polymerase 2 (S2) by peptide dot blot analysis. *Samples:* 5ug RNA Pol II peptides corresponding to phospho S5, phospho S2, and non-phosphorylated RNA Pol II. *Antibody:* Affinity purified rabbit anti-Phospho RNA Polymerase 2 (S2) antibody (A300-654A lot 4) used for WB at 0.04 µg/ml. *Detection:* Chemiluminescence with an exposure time of 3 min.