



SZABO SCANDIC

Part of Europa Biosite

Produktinformation



Forschungsprodukte & Biochemikalien



Zellkultur & Verbrauchsmaterial



Diagnostik & molekulare Diagnostik



Laborgeräte & Service

Weitere Information auf den folgenden Seiten!
See the following pages for more information!



Lieferung & Zahlungsart

siehe unsere [Liefer- und Versandbedingungen](#)

Zuschläge

- Mindermengenzuschlag
- Trockeneiszuschlag
- Gefahrgutzuschlag
- Expressversand

SZABO-SCANDIC Handels GmbH

Quellenstraße 110, A-1100 Wien

T. +43(0)1 489 3961-0

F. +43(0)1 489 3961-7

mail@szabo-scandic.com

www.szabo-scandic.com

[linkedin.com/company/szaboscandic](https://www.linkedin.com/company/szaboscandic) 

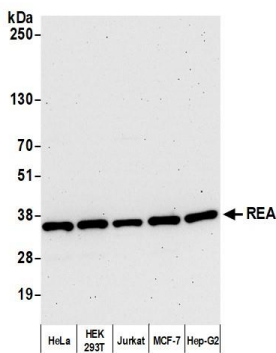
REA Antibody

Rabbit Polyclonal

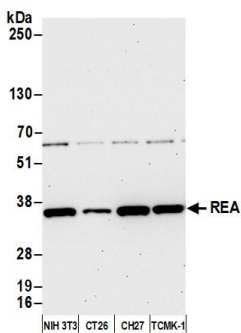
Antigen Affinity Purified	RefSeq ID	NP_009204.1
Catalog No. A300-657A-T	Uniprot ID	Q99623
Lot No. A300-657A-T-3	GeneID	11331

APPLICATIONS	WB, IP
SPECIES REACTIVITY	Human, Mouse
PRESUMED REACTIVITY	Based on 100% sequence identity, this antibody is predicted to react with Rat, Bovine and Orangutan
AMOUNT	10 µl
CONCENTRATION	200 µg/ml
STORAGE/SHELF LIFE	2 – 8°C / 1 year from date of receipt
PHYSICAL STATE	Liquid
BUFFER	Tris-buffered Saline containing 0.1% BSA and 0.09% Sodium Azide
ISOTYPE	IgG
ORIGIN	USA
PRODUCTION PROCEDURES	Antibody was affinity purified using an epitope specific to re immobilized on solid support. The epitope recognized by A300-657A-T maps to a region between residues 225 and 275 of human Repressor of Estrogen Activity (Prohibitin 2) using the numbering given in entry NP_009204.1 (GeneID 11331).
APPLICATIONS	Centrifuge tube to remove product from lid. Optimal working dilutions should be determined experimentally by the investigator. Prepare working dilution immediately before use. Western Blot 1:2,000 – 1:10,000 Immunoprecipitation 2 – 10 µg/mg lysate
ADDITIONAL INFO	https://www.fortislifesciences.com/p/A300-657A-T Use the link above to view SDS, a current list of citations, and other product specific information.

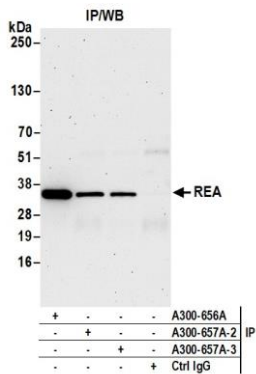
This document certifies that this product has met all of the quality control standards defined by Bethyl Laboratories, Inc.
Michael Spencer, PhD Date: February 7, 2023



Detection of human REA by western blot. *Samples:* Whole cell lysate (10 µg) from HeLa, HEK293T, Jurkat, MCF-7, and Hep-G2 cells prepared using NETN lysis buffer. *Antibody:* Affinity purified rabbit anti-REA antibody (A300-657A lot 3) used for WB at 0.04 µg/ml. *Detection:* Chemiluminescence with an exposure time of 75 seconds.



Detection of mouse REA by western blot. *Samples:* Whole cell lysate (10 µg) from NIH 3T3, CT26, CH27, and TCMK-1 cells. *Antibody:* Affinity purified rabbit anti-REA antibody (A300-657A lot 3) used for WB at 0.04 µg/ml. *Detection:* Chemiluminescence with an exposure time of 75 seconds.



Detection of human REA by western blot of immunoprecipitates. *Samples:* Whole cell lysate (1.0 mg per IP reaction; 20% of IP loaded) from HEK293T cells prepared using NETN lysis buffer. *Antibodies:* Affinity purified rabbit anti-REA antibody (A300-657A lot 3) used for IP at 20 µl per reaction. REA was also immunoprecipitated by a previous lot of this antibody (A300-657A lot 2) and another rabbit anti-REA antibody (A300-656A). For blotting immunoprecipitated REA, A300-657A was used at 0.04 µg/ml. *Detection:* Chemiluminescence with an exposure time of 75 seconds.