



SZABO SCANDIC

Part of Europa Biosite

Produktinformation



Forschungsprodukte & Biochemikalien



Zellkultur & Verbrauchsmaterial



Diagnostik & molekulare Diagnostik



Laborgeräte & Service

Weitere Information auf den folgenden Seiten!
See the following pages for more information!



Lieferung & Zahlungsart

siehe unsere [Liefer- und Versandbedingungen](#)

Zuschläge

- Mindermengenzuschlag
- Trockeneiszuschlag
- Gefahrgutzuschlag
- Expressversand

SZABO-SCANDIC HandelsgmbH

Quellenstraße 110, A-1100 Wien

T. +43(0)1 489 3961-0

F. +43(0)1 489 3961-7

mail@szabo-scandic.com

www.szabo-scandic.com

[linkedin.com/company/szaboscandic](https://www.linkedin.com/company/szaboscandic) 

MAML1 Antibody

Rabbit Polyclonal

Antigen Affinity Purified

Catalog No. A300-672A

Lot No. A300-672A-2

Protein ID NP_055572.1

GeneID 9794



APPLICATIONS WB, IP

SPECIES REACTIVITY Human

AMOUNT 100 µl

CONCENTRATION 1000 µg/ml

STORAGE/SHELF LIFE 2 – 8° C / 1 year from date of receipt

PHYSICAL STATE Liquid

BUFFER Tris-citrate/phosphate buffer, pH 7 to 8 containing 0.09% Sodium Azide

ISOTYPE IgG

ORIGIN USA

PRODUCTION PROCEDURES Antibody was affinity purified using an epitope specific to MAML1 immobilized on solid support.

The epitope recognized by A300-672A maps to a region between residue 75 and 125 of human Mastermind-like 1 using the numbering given in entry NP_055572.1 (GeneID 9794).

Immunoglobulin concentration was determined by extinction coefficient: absorbance at 280 nm of 1.4 equals 1.0 mg of IgG.

APPLICATIONS Centrifuge tube to remove product from lid. Optimal working dilutions should be determined experimentally by the investigator. Prepare working dilution immediately before use.

Western Blot 1:10,000 – 1:25,000

Immunoprecipitation 2 – 10 µg/mg lysate

IHC HUMAN CONTROLS Breast Carcinoma, Ovarian Carcinoma

ADDITIONAL INFO <https://www.bethyl.com/product/A300-672A>

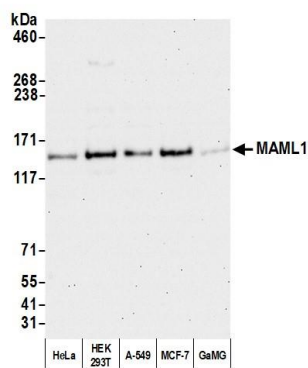
Use the link above to view SDS, a current list of citations, and other product specific information.

IP-western blot protocol: https://www.bethyl.com/content/protocol_IP_WB

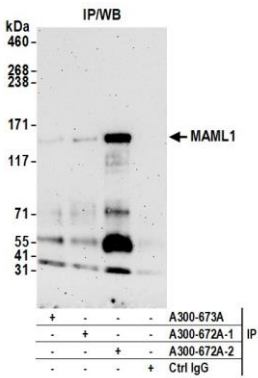
This document certifies that this product has met all of the quality control standards defined by Bethyl Laboratories, Inc.

Brian McWilliams, PhD

Date: December 28, 2020



Detection of human MAML1 by western blot. *Samples:* Whole cell lysate (50 µg) from HeLa, HEK293T, A-549, MCF-7, and GaMG cells prepared using NETN lysis buffer. *Antibody:* Affinity purified rabbit anti-MAML1 antibody A300-672A (lot A300-672A-2) used for WB at 0.04 µg/ml. *Detection:* Chemiluminescence with an exposure time of 30 seconds.



Detection of human MAML1 by western blot of immunoprecipitates. *Samples:* Whole cell lysate (1.0 mg per IP reaction; 20% of IP loaded) from HeLa cells prepared using NETN lysis buffer. *Antibodies:* Affinity purified rabbit anti-MAML1 antibody A300-672A (lot 2) used for IP at 6 µg per reaction. MAML1 was also immunoprecipitated by a previous lot of this antibody (lot 1) and rabbit anti-MAML1 antibody A300-673A. For blotting immunoprecipitated MAML1, A300-672A was used at 0.04 µg/ml. *Detection:* Chemiluminescence with an exposure time of 3 minutes.