



SZABO SCANDIC

Part of Europa Biosite

Produktinformation



Forschungsprodukte & Biochemikalien



Zellkultur & Verbrauchsmaterial



Diagnostik & molekulare Diagnostik



Laborgeräte & Service

Weitere Information auf den folgenden Seiten!
See the following pages for more information!



Lieferung & Zahlungsart

siehe unsere [Liefer- und Versandbedingungen](#)

Zuschläge

- Mindermengenzuschlag
- Trockeneiszuschlag
- Gefahrgutzuschlag
- Expressversand

SZABO-SCANDIC Handels GmbH

Quellenstraße 110, A-1100 Wien

T. +43(0)1 489 3961-0

F. +43(0)1 489 3961-7

mail@szabo-scandic.com

www.szabo-scandic.com

[linkedin.com/company/szaboscandic](https://www.linkedin.com/company/szaboscandic) 

4E-T/eIF4E-T Antibody

Rabbit Polyclonal

Antigen Affinity Purified

Protein ID NP_062817.1

Catalog No. A300-706A

GeneID 56478

Lot No. A300-706A-2



APPLICATIONS	WB, IP, IHC
SPECIES REACTIVITY	Human, Mouse
AMOUNT	100 µl
CONCENTRATION	1000 µg/ml
STORAGE/SHELF LIFE	2 – 8° C / 1 year from date of receipt
PHYSICAL STATE	Liquid
BUFFER	Tris-citrate/phosphate buffer, pH 7 to 8 containing 0.09% Sodium Azide
ISOTYPE	IgG
ORIGIN	USA
PRODUCTION PROCEDURES	Antibody was affinity purified using an epitope specific to 4E-t/eIF4E-T immobilized on solid support.

The epitope recognized by A300-706A maps to a region between residue 925 and the C-terminus (residue 985) of human Eukaryotic Translation Initiation Factor 4E Nuclear Import Factor 1 using the numbering given in entry NP_062817.1 (GeneID 56478).

Immunoglobulin concentration was determined by extinction coefficient: absorbance at 280 nm of 1.4 equals 1.0 mg of IgG.

APPLICATIONS Centrifuge tube to remove product from lid. Optimal working dilutions should be determined experimentally by the investigator. Prepare working dilution immediately before use.

Western Blot 1:2,000 – 1:10,000

Immunoprecipitation 2 – 10 µg/mg lysate

Immunohistochemistry 1:500 – 1:2000. Epitope retrieval with citrate buffer pH 6.0 is recommended for FFPE tissue sections.

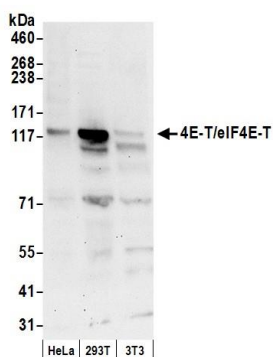
APPLICATION NOTES Western blot of immunoprecipitates performed using Normal Pig Serum (Cat. No. S100-020), Goat anti-Rabbit Light Chain HRP Conjugate (Cat. No. A120-113P) and 4-8% SDS-PAGE (link to IP-western blot protocol in Additional Info section below).

IHC HUMAN CONTROLS Western blot of lysates performed using standard western blot reagents and 4-8% SDS-PAGE. Colon Carcinoma, Prostate Carcinoma

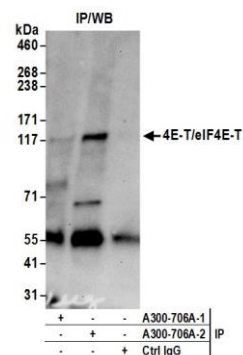
ADDITIONAL INFO <https://www.bethyl.com/product/A300-706A>

Use the link above to view SDS, a current list of citations, and other product specific information. IP-western blot protocol: https://www.bethyl.com/content/protocol_IP_WB

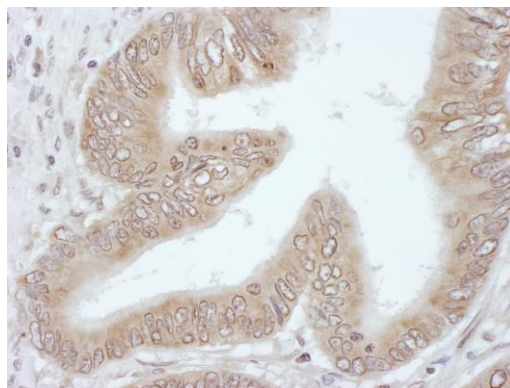
This document certifies that this product has met all of the quality control standards defined by Bethyl Laboratories, Inc.
Eric McIntush, PhD | Chief Scientific Officer Date: June 21, 2019



Detection of human and mouse 4E-T/eIF4E-T by western blot. *Samples:* Whole cell lysate (50 µg) from HeLa, HEK293T, and mouse NIH 3T3 cells prepared using NETN lysis buffer. *Antibody:* Affinity purified rabbit anti-4E-T/eIF4E-T antibody A300-706A (lot A300-706A-2) used for WB at 0.1 µg/ml. *Detection:* Chemiluminescence with an exposure time of 30 seconds.



Detection of human 4E-T/eIF4E-T by western blot of immunoprecipitates. *Samples:* Whole cell lysate (0.5 or 1.0 mg per IP reaction; 20% of IP loaded) from HeLa cells prepared using NETN lysis buffer. *Antibodies:* Affinity purified rabbit anti-4E-T/eIF4E-T antibody A300-706A (lot A300-706A-2) used for IP at 6 µg per reaction. 4E-T/eIF4E-T was also immunoprecipitated by a previous lot of this antibody A300-706A-1. For blotting immunoprecipitated 4E-T/eIF4E-T, A300-706A was used at 1 µg/ml. *Detection:* Chemiluminescence with an exposure time of 30 seconds.



Detection of human 4E-T by immunohistochemistry. *Sample:* FFPE section of human colon carcinoma. *Antibody:* Affinity purified rabbit anti-4E-T (Cat. No. A300-706A Lot2) used at a dilution of 1:1,000 (1 µg/ml). *Detection:* DAB