



# SZABO SCANDIC

Part of Europa Biosite

## Produktinformation



Forschungsprodukte & Biochemikalien



Zellkultur & Verbrauchsmaterial



Diagnostik & molekulare Diagnostik



Laborgeräte & Service

Weitere Information auf den folgenden Seiten!  
See the following pages for more information!



### Lieferung & Zahlungsart

siehe unsere [Liefer- und Versandbedingungen](#)

### Zuschläge

- Mindermengenzuschlag
- Trockeneiszuschlag
- Gefahrgutzuschlag
- Expressversand

### SZABO-SCANDIC HandelsgmbH

Quellenstraße 110, A-1100 Wien

T. +43(0)1 489 3961-0

F. +43(0)1 489 3961-7

[mail@szabo-scandic.com](mailto:mail@szabo-scandic.com)

[www.szabo-scandic.com](http://www.szabo-scandic.com)

[linkedin.com/company/szaboscandic](https://www.linkedin.com/company/szaboscandic) 

# Nucleolin (NCL) Antibody

Rabbit Polyclonal

Antigen Affinity Purified Protein ID NP\_005372.2

Catalog No. A300-711A-T GenelD 4691

Lot No. A300-711A-T-1

<b>APPLICATIONS</b>	WB, IP, IHC, IHC-IF
<b>SPECIES REACTIVITY</b>	Human, Mouse
<b>PRESUMED REACTIVITY</b>	Based on 100% sequence identity, this antibody is predicted to react with Orangutan
<b>AMOUNT</b>	10 µl
<b>CONCENTRATION</b>	200 µg/ml
<b>STORAGE/SHELF LIFE</b>	2 – 8°C / 1 year from date of receipt
<b>PHYSICAL STATE</b>	Liquid
<b>BUFFER</b>	Tris-buffered Saline containing 0.1% BSA and 0.09% Sodium Azide
<b>ISOTYPE</b>	IgG
<b>ORIGIN</b>	USA
<b>PRODUCTION PROCEDURES</b>	Antibody was affinity purified using an epitope specific to Nucleolin (NCL) immobilized on solid support.

The epitope recognized by A300-711A-T maps to a region between residue 550 and the C-terminus (residue 710) of human Nucleolin using the numbering given in entry NP\_005372.2 (GenelD 4691).

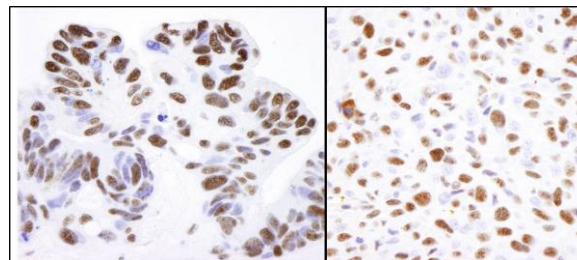
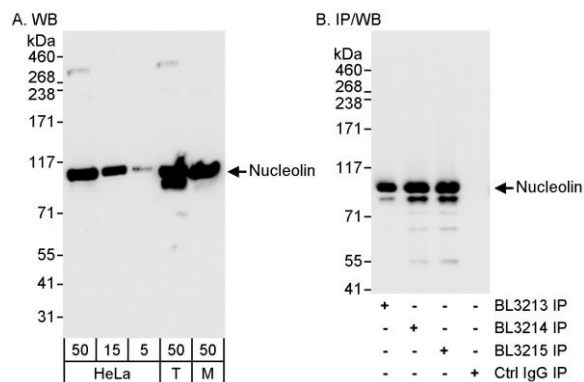
**APPLICATIONS** Centrifuge tube to remove product from lid. Optimal working dilutions should be determined experimentally by the investigator. Prepare working dilution immediately before use.

Western Blot	1:2,000 – 1:10,000
Immunoprecipitation	2 – 5 µg/mg lysate
Immunohistochemistry	1:100 – 1:2,000. Epitope retrieval with citrate buffer pH 6.0 is recommended for FFPE tissue sections.
Immunofluorescence (IHC)	1:50 – 1:1,000

**ADDITIONAL INFO** <https://www.bethyl.com/product/A300-711A-T>

Use the link above to view SDS, a current list of citations, and other product specific information.  
IP-western blot protocol: [https://www.bethyl.com/content/protocol\\_IP\\_WB](https://www.bethyl.com/content/protocol_IP_WB)

This document certifies that this product has met all of the quality control standards defined by Bethyl Laboratories, Inc.  
Michael Spencer, PhD Date: June 6, 2022



**Detection of human and mouse Nucleolin by western blot (h&m) and immunoprecipitation (h).** *Samples:* Whole cell lysate from HeLa (5, 15 and 50 µg for WB; 1 mg for IP, 20% of IP loaded), HEK293T (T; 50 µg), and mouse NIH 3T3 (M; 50 µg) cells. *Antibodies:* Affinity purified rabbit anti-Nucleolin antibody A300-711A used for WB at 0.02 µg/ml (A) and 1 µg/ml (B) and used for IP at 3 µg/mg lysate (B). Nucleolin was also immunoprecipitated using rabbit anti-Nucleolin antibodies A300-709A and A300-710A. *Detection:* Chemiluminescence with exposure times of 10 seconds (A) and 3 seconds (B).

**Detection of human and mouse Nucleolin by immunohistochemistry.** *Sample:* FFPE section of human ovarian carcinoma (left) and mouse squamous cell carcinoma (right). *Antibody:* Affinity purified rabbit anti-Nucleolin (Cat. No. A300-711A Lot1) used at a dilution of 1:1,000 (0.2 µg/ml). *Detection:* DAB

**Detection of mouse Nucleolin by immunohistochemistry.** *Sample:* FFPE section of mouse cerebellum. *Antibody:* Affinity purified rabbit anti-Nucleolin (Cat. No. A302-711A Lot1) used at a dilution of 1:100 (2 µg/ml). *Detection:* Red-fluorescent goat anti-rabbit IgG-heavy and light chain cross-adsorbed Antibody DyLight® 594 Conjugated used at a dilution of 1:100.