



SZABO SCANDIC

Part of Europa Biosite

Produktinformation



Forschungsprodukte & Biochemikalien



Zellkultur & Verbrauchsmaterial



Diagnostik & molekulare Diagnostik



Laborgeräte & Service

Weitere Information auf den folgenden Seiten!
See the following pages for more information!



Lieferung & Zahlungsart

siehe unsere [Liefer- und Versandbedingungen](#)

Zuschläge

- Mindermengenzuschlag
- Trockeneiszuschlag
- Gefahrgutzuschlag
- Expressversand

SZABO-SCANDIC Handels GmbH

Quellenstraße 110, A-1100 Wien

T. +43(0)1 489 3961-0

F. +43(0)1 489 3961-7

mail@szabo-scandic.com

www.szabo-scandic.com

[linkedin.com/company/szaboscandic](https://www.linkedin.com/company/szaboscandic)



RPL7 Antibody

Rabbit Polyclonal

Antigen Affinity Purified	RefSeq ID	NP_000962.2
Catalog No. A300-741A-T	Uniprot ID	P18124
Lot No. 4	GeneID	6129

APPLICATIONS	WB, IP, IHC
SPECIES REACTIVITY	Human, Mouse
PRESUMED REACTIVITY	Based on 100% sequence identity, this antibody is predicted to react with Rat, Chicken, Bovine and Orangutan
AMOUNT	10 µl
CONCENTRATION	200 µg/ml
STORAGE/SHELF LIFE	2 – 8°C / 1 year from date of receipt
PHYSICAL STATE	Liquid
BUFFER	Tris-buffered Saline containing 0.1% BSA and 0.09% Sodium Azide
ISOTYPE	IgG
ORIGIN	USA
PRODUCTION PROCEDURES	Antibody was affinity purified using an epitope specific to RPL7 immobilized on solid support.

The epitope recognized by A300-741A-T maps to a region between residue 200 and the C-terminus (residue 248) of human Ribosomal Protein L7 using the numbering given in entry NP_000962.2 (GeneID 6129).

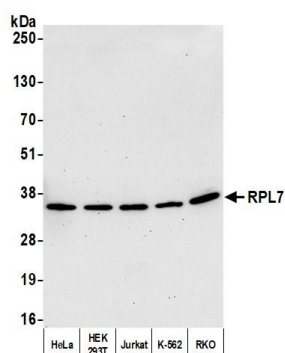
APPLICATIONS	Centrifuge tube to remove product from lid. Optimal working dilutions should be determined experimentally by the investigator. Prepare working dilution immediately before use.
	Western Blot 1:2,000 – 1:10,000
	Immunoprecipitation 2 – 10 µg/mg lysate
	Immunohistochemistry 1:40 to 1:200. Epitope retrieval with citrate buffer pH6.0 is recommended for FFPE tissue sections.

IHC HUMAN CONTROLS Breast Carcinoma, Non-Small Cell Lung Cancer, Ovarian Carcinoma, Prostate Carcinoma

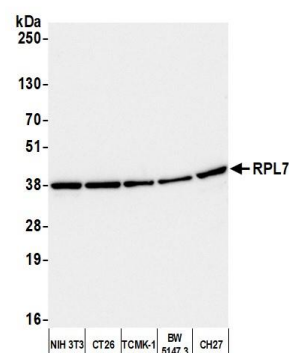
IHC MOUSE CONTROLS Renal Cell Carcinoma, Teratoma, CT26 cells

ADDITIONAL INFO <https://www.fortislifesciences.com/p/A300-741A-T>
Use the link above to view SDS, a current list of citations, and other product specific information.

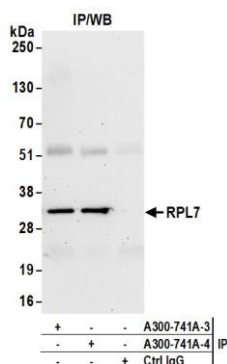
This document certifies that this product has met all of the quality control standards defined by Bethyl Laboratories, Inc.
Michael Spencer, PhD Date: August 25, 2023



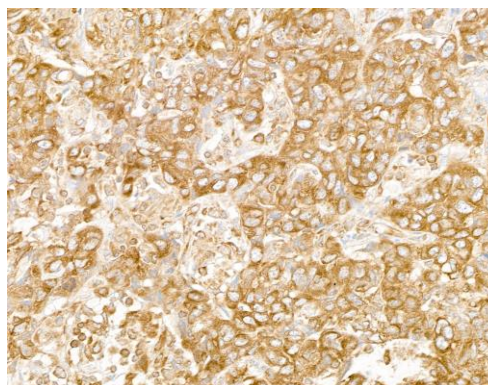
Detection of human RPL7 by western blot. *Samples:* Whole cell lysate (10 µg) from HeLa, HEK293T, Jurkat, K-562, and RKO cells prepared using NETN lysis buffer. *Antibody:* Affinity purified rabbit anti-RPL7 antibody (A300-741A lot 4) used for WB at 0.04 µg/ml. *Detection:* Chemiluminescence with an exposure time of 30 seconds.



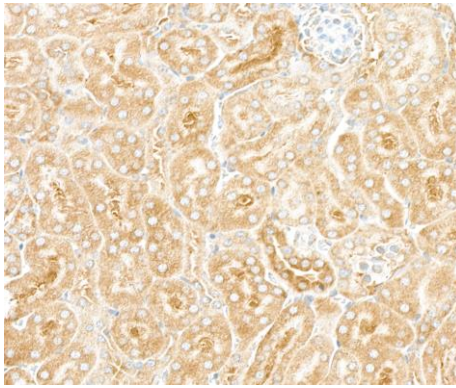
Detection of mouse RPL7 by western blot. *Samples:* Whole cell lysate (25 µg) from NIH 3T3, CT26, TCMK-1, BW5147.3, and CH27 cells prepared using NETN lysis buffer. *Antibody:* Affinity purified rabbit anti-RPL7 antibody (A300-741A lot 4) used for WB at 0.04 µg/ml. *Detection:* Chemiluminescence with an exposure time of 3 seconds.



Detection of human RPL7 by western blot of immunoprecipitates. *Samples:* Whole cell lysate (1.0 mg per IP reaction; 20% of IP loaded) from HEK293T cells prepared using NETN lysis buffer. *Antibodies:* Affinity purified rabbit anti-RPL7 antibody (A300-741A lot 4) used for IP at 6 µg per reaction. RPL7 was also immunoprecipitated by a previous lot of this antibody (A300-741A lot 3). For blotting immunoprecipitated RPL7, A300-741A was used at 0.1 µg/ml. *Detection:* Chemiluminescence with an exposure time of 30 seconds.



Detection of human RPL7 by immunohistochemistry. *Sample:* FFPE section of human breast carcinoma. *Antibody:* Affinity purified rabbit anti-RPL7 (A300-741A lot 4) used at a dilution of 1:200 (1 µg/ml). *Detection:* DAB

**Detection of mouse RPL7 by immunohistochemistry.**

Sample: FFPE section of mouse kidney. *Antibody:* Affinity purified rabbit anti-RPL7 (A300-741A lot 4) used at a dilution of 1:200 (1 µg/ml). *Detection:* DAB