



# SZABO SCANDIC

Part of Europa Biosite

## Produktinformation



Forschungsprodukte & Biochemikalien



Zellkultur & Verbrauchsmaterial



Diagnostik & molekulare Diagnostik



Laborgeräte & Service

Weitere Information auf den folgenden Seiten!  
See the following pages for more information!



### Lieferung & Zahlungsart

siehe unsere [Liefer- und Versandbedingungen](#)

### Zuschläge

- Mindermengenzuschlag
- Trockeneiszuschlag
- Gefahrgutzuschlag
- Expressversand

### SZABO-SCANDIC HandelsgmbH

Quellenstraße 110, A-1100 Wien

T. +43(0)1 489 3961-0

F. +43(0)1 489 3961-7

[mail@szabo-scandic.com](mailto:mail@szabo-scandic.com)

[www.szabo-scandic.com](http://www.szabo-scandic.com)

[linkedin.com/company/szaboscandic](https://www.linkedin.com/company/szaboscandic) 

# SRA Antibody

Rabbit Polyclonal

Antigen Affinity Purified

Protein ID NP\_001030312.1

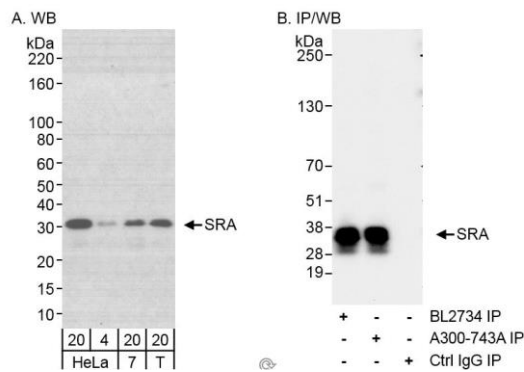
Catalog No. A300-743A-T

GeneID 10011

Lot No. A300-743A-T-1

<b>APPLICATIONS</b>	WB, IP
<b>SPECIES REACTIVITY</b>	Human
<b>AMOUNT</b>	10 µl
<b>CONCENTRATION</b>	1000 µg/ml
<b>STORAGE/SHELF LIFE</b>	2 – 8°C / 1 year from date of receipt
<b>PHYSICAL STATE</b>	Liquid
<b>BUFFER</b>	Tris-citrate/phosphate buffer, pH 7 to 8 containing 0.09% Sodium Azide
<b>ISOTYPE</b>	IgG
<b>ORIGIN</b>	USA
<b>PRODUCTION PROCEDURES</b>	Antibody was affinity purified using an epitope specific to SRA immobilized on solid support.  The epitope recognized by A300-743A-T maps to a region between residue 180 and the C-terminus (residue 237) of human Steroid Receptor RNA Activator 1 using the numbering given in entry NP_001030312.1 (GeneID 10011).
<b>APPLICATIONS</b>	Centrifuge tube to remove product from lid. Optimal working dilutions should be determined experimentally by the investigator. Prepare working dilution immediately before use.  Western Blot 1:2,000 – 1:10,000  Immunoprecipitation 2 – 5 µg/mg lysate
<b>ADDITIONAL INFO</b>	<a href="https://www.bethyl.com/product/A300-743A-T">https://www.bethyl.com/product/A300-743A-T</a> Use the link above to view SDS, a current list of citations, and other product specific information. IP-western blot protocol: <a href="https://www.bethyl.com/content/protocol_IP_WB">https://www.bethyl.com/content/protocol_IP_WB</a>

This document certifies that this product has met all of the quality control standards defined by Bethyl Laboratories, Inc.  
Michael Spencer, PhD Date: June 6, 2022



**Detection of human SRA by western blot and immunoprecipitation.** *Samples:* Whole cell lysate from HeLa (20 and 4  $\mu$ g for WB; 1 mg for IP, 20% of IP loaded), MCF-7 (7; 20  $\mu$ g) and HEK293T (T; 20 $\mu$ g). *Antibodies:* Affinity purified rabbit anti-SRA antibody A300-743A (lot A300-743A-1) used for WB at 0.1  $\mu$ g/ml (A) and 1  $\mu$ g/ml (B) and used for IP at 3  $\mu$ g/mg lysate (B). SRA was also immunoprecipitated using rabbit anti-SRA antibody BL2734 at 3  $\mu$ g/mg lysate. *Detection:* Chemiluminescence with exposure times of 5 minutes (A) and 10 seconds (B).