



SZABO SCANDIC

Part of Europa Biosite

Produktinformation



Forschungsprodukte & Biochemikalien



Zellkultur & Verbrauchsmaterial



Diagnostik & molekulare Diagnostik



Laborgeräte & Service

Weitere Information auf den folgenden Seiten!
See the following pages for more information!



Lieferung & Zahlungsart

siehe unsere [Liefer- und Versandbedingungen](#)

Zuschläge

- Mindermengenzuschlag
- Trockeneiszuschlag
- Gefahrgutzuschlag
- Expressversand

SZABO-SCANDIC Handels GmbH

Quellenstraße 110, A-1100 Wien

T. +43(0)1 489 3961-0

F. +43(0)1 489 3961-7

mail@szabo-scandic.com

www.szabo-scandic.com

[linkedin.com/company/szaboscandic](https://www.linkedin.com/company/szaboscandic)



DJ-1 Antibody

Rabbit Polyclonal

Antigen Affinity Purified

Protein ID NP_009193.2

Catalog No. A300-744A-T

GeneID 11315

Lot No. A300-744A-T-1

APPLICATIONS WB, IP, IHC

SPECIES REACTIVITY Human, Mouse

AMOUNT 10 µl

CONCENTRATION 200 µg/ml

STORAGE/SHELF LIFE 2 – 8°C / 1 year from date of receipt

PHYSICAL STATE Liquid

BUFFER Tris-buffered Saline containing 0.1% BSA and 0.09% Sodium Azide

ISOTYPE IgG

ORIGIN USA

PRODUCTION PROCEDURES Antibody was affinity purified using an epitope specific to DJ-1 immobilized on solid support.

The epitope recognized by A300-744A-T maps to a region between residue 140 and the C-terminus (residue 189) of human DJ-1 (PARK7, Parkinson Disease 7) using the numbering given in entry NP_009193.2 (GeneID 11315).

APPLICATIONS Centrifuge tube to remove product from lid. Optimal working dilutions should be determined experimentally by the investigator. Prepare working dilution immediately before use.

Western Blot 1:2,000 – 1:10,000

Immunoprecipitation 2 – 5 µg/mg lysate

Immunohistochemistry 1:500 – 1:2,000. Epitope retrieval with Tris-EDTA pH 9.0 is recommended for FFPE tissue sections.

ADDITIONAL INFO <https://www.bethyl.com/product/A300-744A-T>

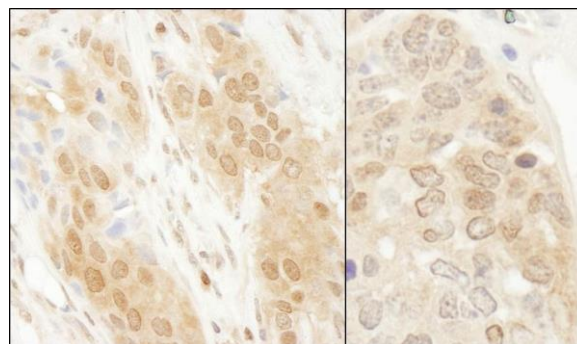
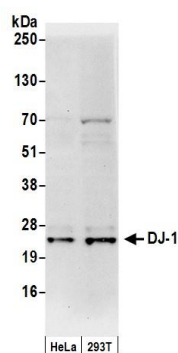
Use the link above to view SDS, a current list of citations, and other product specific information.

IP-western blot protocol: https://www.bethyl.com/content/protocol_IP_WB

This document certifies that this product has met all of the quality control standards defined by Bethyl Laboratories, Inc.

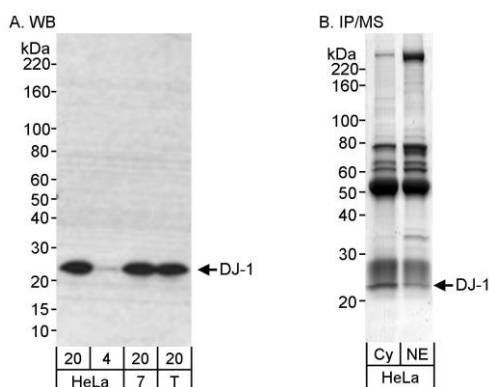
Michael Spencer, PhD

Date: June 6, 2022



Detection of human DJ-1 by western blot. *Samples:* Whole cell lysate (50 µg) from HeLa and HEK293T cells prepared using NETN lysis buffer. *Antibody:* Affinity purified rabbit anti-DJ-1 antibody A300-744A (lot A300-744A-1) used for WB at 0.1 µg/ml. *Detection:* Chemiluminescence with an exposure time of 30 seconds.

Detection of human and mouse DJ-1 by immunohistochemistry. *Sample:* FFPE section of human breast carcinoma (left) and mouse teratoma (right). *Antibody:* Affinity purified rabbit anti-DJ-1 (Cat. No. A300-744A Lot1) used at a dilution of 1:1,000 (0.2µg/ml). *Detection:* DAB



Detection of human DJ-1 by western blot and immunoprecipitation/Mass Spectrometry. *Samples:* A) Whole cell lysate from HeLa (20 and 4 µg for WB), MCF-7 (7; 20µg) and HEK293T (T; 20µg) cells. B) Cytosolic and nuclear extract (10 mg/IP) from HeLa S3 cells. *Antibodies:* Affinity purified rabbit anti-DJ-1 antibody (Cat.No. A300-744A) used for WB at 0.1 µg/ml (A) and for IP at 0.7 µg/mg lysate (B). *Detection:* Chemiluminescence with an exposure time of 5 sec (A) and vMALDI-LTQ and LC-MS/MS of Coomassie stained bands (B).