



SZABO SCANDIC

Part of Europa Biosite

Produktinformation



Forschungsprodukte & Biochemikalien



Zellkultur & Verbrauchsmaterial



Diagnostik & molekulare Diagnostik



Laborgeräte & Service

Weitere Information auf den folgenden Seiten!
See the following pages for more information!



Lieferung & Zahlungsart

siehe unsere [Liefer- und Versandbedingungen](#)

Zuschläge

- Mindermengenzuschlag
- Trockeneiszuschlag
- Gefahrgutzuschlag
- Expressversand

SZABO-SCANDIC Handels GmbH

Quellenstraße 110, A-1100 Wien

T. +43(0)1 489 3961-0

F. +43(0)1 489 3961-7

mail@szabo-scandic.com

www.szabo-scandic.com

[linkedin.com/company/szaboscandic](https://www.linkedin.com/company/szaboscandic) 

E2F1 Antibody

Rabbit Polyclonal

Antigen Affinity Purified	RefSeq ID	NP_005216.1
Catalog No. A300-766A-T	Uniprot ID	Q01094
Lot No. 2	GenelD	1869

APPLICATIONS	WB, IP
SPECIES REACTIVITY	Human
PRESUMED REACTIVITY	Based on 100% sequence identity, this antibody is predicted to react with Mouse
AMOUNT	10 µl
CONCENTRATION	1000 µg/ml
STORAGE/SHELF LIFE	2 – 8°C / 1 year from date of receipt
PHYSICAL STATE	Liquid
BUFFER	Tris-citrate/phosphate buffer, pH 7 to 8 containing 0.09% Sodium Azide
ISOTYPE	IgG
ORIGIN	USA
PRODUCTION PROCEDURES	Antibody was affinity purified using an epitope specific to E2F1 immobilized on solid support.

The epitope recognized by A300-766A-T maps to a region between residue 387 and 437 of human E2F Transcription Factor 1 using the numbering given in entry NP_005216.1 (GenelD 1869).

APPLICATIONS Centrifuge tube to remove product from lid. Optimal working dilutions should be determined experimentally by the investigator. Prepare working dilution immediately before use.

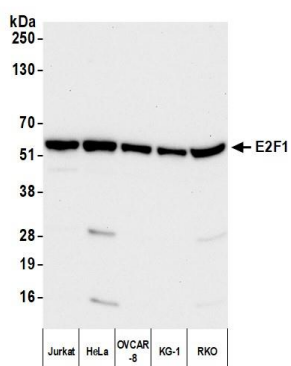
Western Blot 1:2500 – 1:10,000

Immunoprecipitation 6 µg/mg lysate

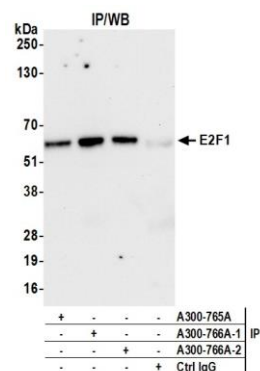
ADDITIONAL INFO <https://www.fortislifesciences.com/p/A300-766A-T>

Use the link above to view SDS, a current list of citations, and other product specific information.

This document certifies that this product has met all of the quality control standards defined by Bethyl Laboratories, Inc.
Michael Spencer, PhD Date: February 12, 2024



Detection of human E2F1 by western blot. *Samples:* Whole cell lysate (25 µg) from Jurkat, HeLa, OVCAR-8, KG-1, and RKO cells prepared using NETN lysis buffer. *Antibody:* Affinity purified rabbit anti-E2F1 antibody (A300-766A lot 2) used for WB at 0.1 µg/ml. *Detection:* Chemiluminescence with an exposure time of 75 seconds.



Detection of human E2F1 by western blot of immunoprecipitates. *Samples:* Whole cell lysate (1 mg per IP; 10% of IP loaded) from Jurkat cells prepared using NETN lysis buffer. *Antibodies:* Affinity purified rabbit anti-E2F1 antibody (A300-766A lot 2) used for IP at 6 µg per reaction. E2F1 was also immunoprecipitated by a previous lot of this antibody (A300-766A lot 1) and a second antibody against a different epitope of E2F1 (A300-765A). For blotting immunoprecipitated E2F1, A300-766A was used at 0.1 µg/ml. *Detection:* Chemiluminescence with an exposure time of 75 seconds.