



SZABO SCANDIC

Part of Europa Biosite

Produktinformation



Forschungsprodukte & Biochemikalien



Zellkultur & Verbrauchsmaterial



Diagnostik & molekulare Diagnostik



Laborgeräte & Service

Weitere Information auf den folgenden Seiten!
See the following pages for more information!



Lieferung & Zahlungsart

siehe unsere [Liefer- und Versandbedingungen](#)

Zuschläge

- Mindermengenzuschlag
- Trockeneiszuschlag
- Gefahrgutzuschlag
- Expressversand

SZABO-SCANDIC HandelsgmbH

Quellenstraße 110, A-1100 Wien

T. +43(0)1 489 3961-0

F. +43(0)1 489 3961-7

mail@szabo-scandic.com

www.szabo-scandic.com

[linkedin.com/company/szaboscandic](https://www.linkedin.com/company/szaboscandic) 

Phospho KAP-1 (S824) Antibody

Rabbit Polyclonal

Antigen Affinity Purified	RefSeq ID	NP_005753.1
Catalog No. A300-767A-T	Uniprot ID	Q13263
Lot No. 6	GeneID	10155

APPLICATIONS	WB, IP, IHC, ICC, ICC-IF
SPECIES REACTIVITY	Human, Mouse
AMOUNT	10 µl
CONCENTRATION	200 µg/ml
STORAGE/SHELF LIFE	2 – 8°C / 1 year from date of receipt
PHYSICAL STATE	Liquid
BUFFER	Tris-buffered Saline containing 0.1% BSA and 0.09% Sodium Azide
ISOTYPE	IgG
ORIGIN	USA
PRODUCTION PROCEDURES	Antibody was affinity purified using an epitope specific to Phospho KAP-1 (S824) immobilized on solid support.

Immunogen for A300-767A-T was a synthetic phosphorylated peptide, which represented a portion of human KRAB-Associated Protein 1 surrounding Serine 824 according to the numbering given in entry NP_005753.1 (GeneID 10155).

APPLICATIONS Centrifuge tube to remove product from lid. Optimal working dilutions should be determined experimentally by the investigator. Prepare working dilution immediately before use.

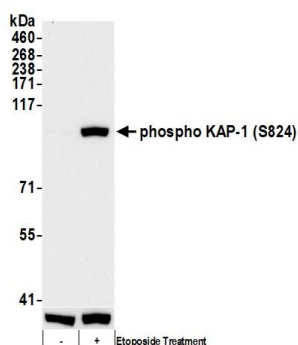
Western Blot	1:2,000 – 1:10,000
Immunoprecipitation	2 – 10 µg/mg lysate
Immunohistochemistry	1:20 to 1:100. Epitope retrieval with citrate buffer pH6.0 is recommended for FFPE tissue sections.
Immunocytochemistry	1:200 – 1:1,000
Immunofluorescence (ICC)	1:200 – 1:1,000

IHC HUMAN CONTROLS Breast Carcinoma, Colon Carcinoma, Non-Small Cell Lung Cancer, Prostate Carcinoma

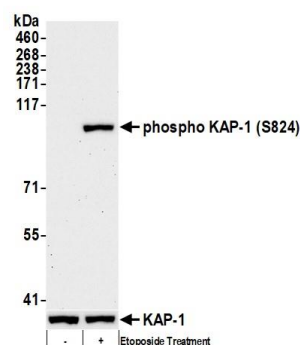
ADDITIONAL INFO <https://www.fortislife.com/p/A300-767A-T>

Use the link above to view SDS, a current list of citations, and other product specific information.

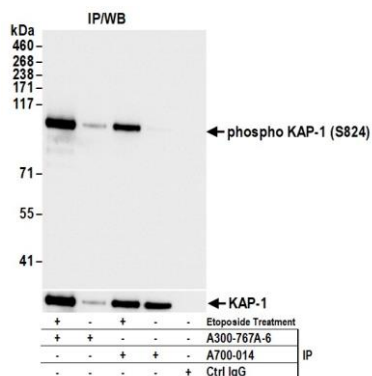
This document certifies that this product has met all of the quality control standards defined by Bethyl Laboratories, Inc.
Michael Spencer, PhD Date: May 15, 2023



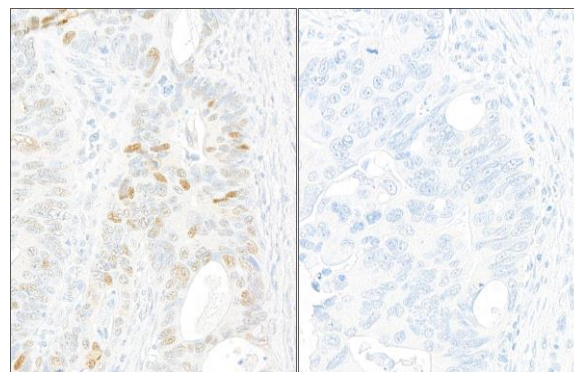
Detection of human phospho KAP-1 (S824) by western blot. *Samples:* Whole cell lysate (10 μ g) from HEK293T cells treated with 100 μ M etoposide (+) or mock treated (-). *Antibody:* Affinity purified rabbit anti-phospho KAP-1 (S824) antibody (A300-767A lot 6) used for WB at 0.04 μ g/ml. *Detection:* Chemiluminescence with an exposure time of 10 seconds. Lower Panel: Rabbit anti-KAP1 antibody (A700-014).



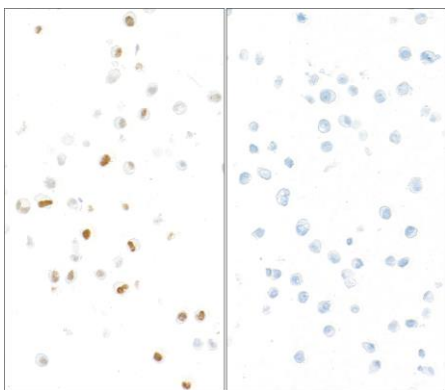
Detection of mouse phospho KAP-1 (S824) by western blot. *Samples:* Whole cell lysate (10 μ g) from NIH 3T3 cells treated with 100 μ M etoposide (+) or mock treated (-). *Antibody:* Affinity purified rabbit anti-phospho KAP-1 (S824) antibody (A300-767A lot 6) used for WB at 0.04 μ g/ml. *Detection:* Chemiluminescence with an exposure time of 30 seconds. Lower Panel: Rabbit anti-KAP-1 antibody (A700-014).



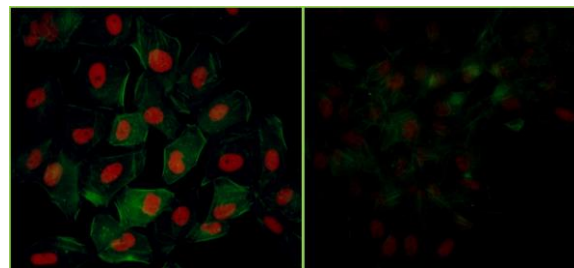
Detection of human phospho KAP-1 (S824) by western blot of immunoprecipitates. *Samples:* Whole cell lysate (1.0 mg per IP reaction; 10% of IP loaded) from HEK293T cells treated with 100 μ M etoposide (+) or mock treated (-). *Antibodies:* Affinity purified rabbit anti-phospho KAP-1 (S824) antibody (A300-767A lot 6) and rabbit anti-KAP-1 recombinant monoclonal antibody (A700-014) used for IP at 6 μ g per reaction. For blotting immunoprecipitated Phospho KAP-1 (S824), A300-767A was used at 0.04 μ g/ml. *Detection:* Chemiluminescence with an exposure time of 1 second. Lower Panel: Rabbit anti-KAP1 antibody (A700-014).



Detection of human Phospho KAP-1 (S824) by immunohistochemistry. *Samples:* FFPE serial sections of prostate carcinoma with MOCK CIP treatment (left) and prostate carcinoma with CIP treatment (right). *Antibody:* Affinity purified rabbit anti-Phospho KAP-1 (S824) (Cat. No. A300-767A lot 6) used at a dilution of 1:200 (1 μ g/ml). *Detection:* DAB



Detection of human Phospho KAP-1 (S824) by immunocytochemistry. *Samples:* FFPE serial sections of asynchronous etoposide treated HeLa cells with MOCK CIP treatment (left) and etoposide treated HeLa cells with CIP treatment (right). *Antibody:* Affinity purified rabbit anti-Phospho KAP-1 (S824) (Cat. No. A300-767A lot 6) used at a dilution of 1:200 (1 µg/ml). *Detection:* DAB



Detection of human Phospho KAP-1 (S824) by immunocytochemistry. *Samples:* NBF-fixed asynchronous HeLa cells grown in chambered microscope slides and treated with etoposide (left) or untreated (right). *Antibody:* Affinity purified rabbit anti-Phospho KAP-1 (S824) (Cat. No. A300-767A) used at a dilution of 1:200 (1 µg/ml). *Detection:* Red fluorescent anti-rabbit IgG-DyLight® 594 conjugated used at a dilution of 1:100.