



# SZABO SCANDIC

Part of Europa Biosite

## Produktinformation



Forschungsprodukte & Biochemikalien



Zellkultur & Verbrauchsmaterial



Diagnostik & molekulare Diagnostik



Laborgeräte & Service

Weitere Information auf den folgenden Seiten!  
See the following pages for more information!



### Lieferung & Zahlungsart

siehe unsere [Liefer- und Versandbedingungen](#)

### Zuschläge

- Mindermengenzuschlag
- Trockeneiszuschlag
- Gefahrgutzuschlag
- Expressversand

### SZABO-SCANDIC HandelsgmbH

Quellenstraße 110, A-1100 Wien

T. +43(0)1 489 3961-0

F. +43(0)1 489 3961-7

[mail@szabo-scandic.com](mailto:mail@szabo-scandic.com)

[www.szabo-scandic.com](http://www.szabo-scandic.com)

[linkedin.com/company/szaboscandic](https://www.linkedin.com/company/szaboscandic) 

# FIGNL1 Antibody

Rabbit Polyclonal

Antigen Affinity Purified

Catalog No. A300-773A

Lot No. A300-773A-1

Protein ID NP\_071399.2

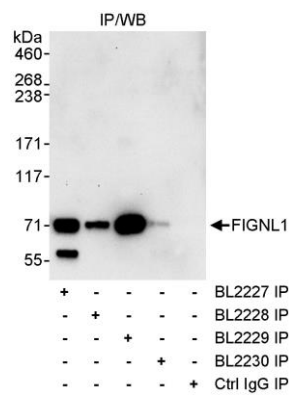
GeneID 63979



|                       |   |
|-----------------------|---|
| APPLICATIONS          | IP  |
| SPECIES REACTIVITY    | Human   |
| AMOUNT                | 100 µl  |
| CONCENTRATION         | 1000 µg/ml  |
| STORAGE/SHELF LIFE    | 2 – 8° C / 1 year from date of receipt  |
| PHYSICAL STATE        | Liquid  |
| BUFFER                | Tris-citrate/phosphate buffer, pH 7 to 8 containing 0.09% Sodium Azide  |
| ISOTYPE               | IgG   |
| ORIGIN                | USA   |
| PRODUCTION PROCEDURES | <p>Antibody was affinity purified using an epitope specific to FIGNL1 immobilized on solid support.</p> <p>The epitope recognized by A300-773A maps to a region between residue 325 and 375 of human Fidgetin-Like 1 using the numbering given in entry NP_071399.2 (GeneID 63979).</p> <p>Immunoglobulin concentration was determined by extinction coefficient: absorbance at 280 nm of 1.4 equals 1.0 mg of IgG.</p> |
| APPLICATIONS          | <p>Centrifuge tube to remove product from lid. Optimal working dilutions should be determined experimentally by the investigator. Prepare working dilution immediately before use.</p> <p>Western Blot                      Not recommended. Use rabbit anti-FIGNL1 antibody A300-772A.</p> <p>Immunoprecipitation              2 – 5 µg/mg lysate</p>  |
| APPLICATION NOTES     | Western blot of immunoprecipitates performed using Normal Pig Serum (Cat. No. S100-020), Goat anti-Rabbit Light Chain HRP Conjugate (Cat. No. A120-113P) and 4-8% SDS-PAGE (link to IP-western blot protocol in Additional Info section below).   |
| ADDITIONAL INFO       | <p><a href="https://www.bethyl.com/product/A300-773A">https://www.bethyl.com/product/A300-773A</a></p> <p>Use the link above to view SDS, a current list of citations, and other product specific information. IP-western blot protocol: <a href="https://www.bethyl.com/content/protocol_IP_WB">https://www.bethyl.com/content/protocol_IP_WB</a></p>  |

This document certifies that this product has met all of the quality control standards defined by Bethyl Laboratories, Inc.  
Eric McIntush, PhD | Chief Scientific Officer

Date: June 21, 2019



**Detection of human FIGNL1 by western blot of immunoprecipitates.** *Samples:* Whole cell lysate (1 mg for IP, 20% of IP loaded) from HeLa cells. *Antibodies:* Affinity purified rabbit anti-FIGNL1 antibody BL2229 (Cat. No. A300-768A) used for IP at 3 µg/mg lysate. FIGNL1 was also immunoprecipitated by rabbit anti-FIGNL1 antibodies BL2227 (Cat. No. A300-772A), BL2228 and BL2230. For blotting immunoprecipitated FIGNL1, BL2227 was used at 1 µg/ml. *Detection:* Chemiluminescence with an exposure time of 30 seconds.