



# SZABO SCANDIC

Part of Europa Biosite

## Produktinformation



Forschungsprodukte & Biochemikalien



Zellkultur & Verbrauchsmaterial



Diagnostik & molekulare Diagnostik



Laborgeräte & Service

Weitere Information auf den folgenden Seiten!  
See the following pages for more information!



### Lieferung & Zahlungsart

siehe unsere [Liefer- und Versandbedingungen](#)

### Zuschläge

- Mindermengenzuschlag
- Trockeneiszuschlag
- Gefahrgutzuschlag
- Expressversand

### SZABO-SCANDIC Handels GmbH

Quellenstraße 110, A-1100 Wien

T. +43(0)1 489 3961-0

F. +43(0)1 489 3961-7

[mail@szabo-scandic.com](mailto:mail@szabo-scandic.com)

[www.szabo-scandic.com](http://www.szabo-scandic.com)

[linkedin.com/company/szaboscandic](https://www.linkedin.com/company/szaboscandic) 

# ZWINT-1 Antibody

Rabbit Polyclonal

Antigen Affinity Purified	Protein ID	NP_008988.2
Catalog No. A300-781A-T	GenelD	11130
Lot No. A300-781A-T-1		

<b>APPLICATIONS</b>	WB, IP, ICC-IF
<b>SPECIES REACTIVITY</b>	Human
<b>AMOUNT</b>	10 µl
<b>CONCENTRATION</b>	200 µg/ml
<b>STORAGE/SHELF LIFE</b>	2 – 8°C / 1 year from date of receipt
<b>PHYSICAL STATE</b>	Liquid
<b>BUFFER</b>	Tris-buffered Saline containing 0.1% BSA and 0.09% Sodium Azide
<b>ISOTYPE</b>	IgG
<b>ORIGIN</b>	USA
<b>PRODUCTION PROCEDURES</b>	Antibody was affinity purified using an epitope specific to ZWINT-1 immobilized on solid support.

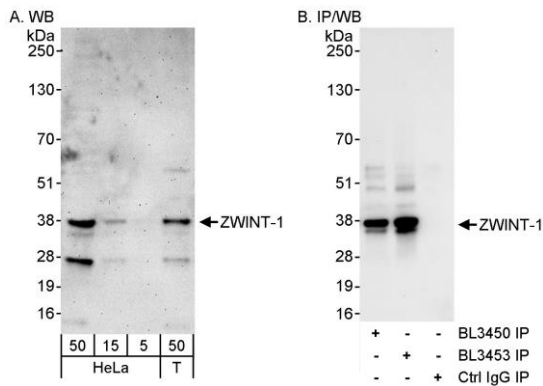
The epitope recognized by A300-781A-T maps to a region between residue 225 and the C-terminus (residue 277) of human ZW10 Interactor-1 using the numbering given in entry NP\_008988.2 (GenelD 11130).

**APPLICATIONS** Centrifuge tube to remove product from lid. Optimal working dilutions should be determined experimentally by the investigator. Prepare working dilution immediately before use.

Western Blot	1:2,000 – 1:10,000
Immunoprecipitation	2 – 5 µg/mg lysate
Immunofluorescence (ICC)	1:50 – 1:250. Formaldehyde fixation is recommended. Permeabilization with Triton-X 100 is recommended for formaldehyde-fixed cells.

**ADDITIONAL INFO** <https://www.bethyl.com/product/A300-781A-T>  
Use the link above to view SDS, a current list of citations, and other product specific information.  
IP-western blot protocol: [https://www.bethyl.com/content/protocol\\_IP\\_WB](https://www.bethyl.com/content/protocol_IP_WB)

This document certifies that this product has met all of the quality control standards defined by Bethyl Laboratories, Inc.  
Michael Spencer, PhD Date: June 6, 2022



**Detection of human ZWINT-1 by western blot and immunoprecipitation.** *Samples:* Whole cell lysate from HeLa (5, 15 and 50 µg for WB; 1 mg for IP, 20% of IP loaded) and HEK293T (T; 50 µg) cells. *Antibodies:* Affinity purified rabbit anti-ZWINT-1 antibody BL3453 (Cat. No. A300-781A) used for WB at 0.04 µg/ml (A) and at 1 µg/ml (B) and used for IP at 3 µg/mg lysate (B). ZWINT-1 was also immunoprecipitated by rabbit anti-ZWINT-1 antibody BL3450 (Cat. No. A300-780A). *Detection:* Chemiluminescence with exposure times of 3 minutes (A) and 30 seconds (B).

**Detection of human ZWINT-1 by immunocytochemistry.** *Sample:* formaldehyde-fixed HeLa cells. *Antibody:* Affinity purified rabbit anti-ZWINT-1 ( Cat. No. A300-781A Lot1) used at a dilution of 1:200 (1µg/ml). *Detection:* Green fluorescent goat anti-rabbit IgG highly cross-adsorbed Antibody FITC conjugated (Cat. No. A120-501F) used at a dilution of 1:100 (right).

