



SZABO SCANDIC

Part of Europa Biosite

Produktinformation



Forschungsprodukte & Biochemikalien



Zellkultur & Verbrauchsmaterial



Diagnostik & molekulare Diagnostik



Laborgeräte & Service

Weitere Information auf den folgenden Seiten!
See the following pages for more information!



Lieferung & Zahlungsart

siehe unsere [Liefer- und Versandbedingungen](#)

Zuschläge

- Mindermengenzuschlag
- Trockeneiszuschlag
- Gefahrgutzuschlag
- Expressversand

SZABO-SCANDIC HandelsgmbH

Quellenstraße 110, A-1100 Wien

T. +43(0)1 489 3961-0

F. +43(0)1 489 3961-7

mail@szabo-scandic.com

www.szabo-scandic.com

[linkedin.com/company/szaboscandic](https://www.linkedin.com/company/szaboscandic) 

Phospho MCM2 (S40/S41) Antibody

Rabbit Polyclonal

Antigen Affinity Purified	Protein ID	NP_004517.2
Catalog No. A300-788A-T	GeneID	4171
Lot No. A300-788A-T-2		

APPLICATIONS	WB, IHC, F
SPECIES REACTIVITY	Human
PRESUMED REACTIVITY	Based on 100% sequence identity, this antibody is predicted to react with Mouse, <i>X. laevis</i> and <i>X. tropicalis</i>
AMOUNT	10 µl
CONCENTRATION	200 µg/ml
STORAGE/SHELF LIFE	2 – 8°C / 1 year from date of receipt
PHYSICAL STATE	Liquid
BUFFER	Tris-buffered Saline containing 0.1% BSA and 0.09% Sodium Azide
ISOTYPE	IgG
ORIGIN	USA
PRODUCTION PROCEDURES	Antibody was affinity purified using an epitope specific to Phospho MCM2 (S40/S41) immobilized on solid support.

Immunogen for A300-788A-T was a synthetic di-phosphorylated peptide, which represented a portion of human minichromosomal maintenance deficient 2 surrounding Serines 40 and 41 according to the numbering given in entry NP_004517.2 (GeneID 4171).

APPLICATIONS Centrifuge tube to remove product from lid. Optimal working dilutions should be determined experimentally by the investigator. Prepare working dilution immediately before use.

Western Blot 1:1,000 – 1:5,000

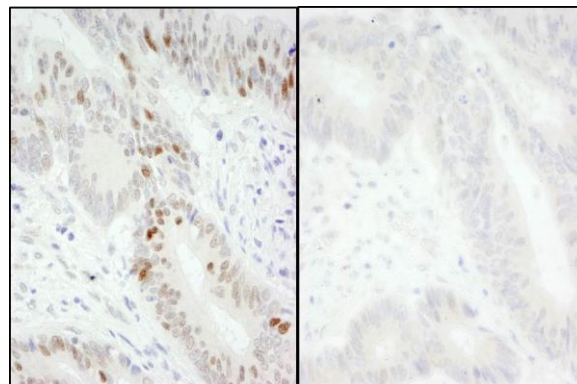
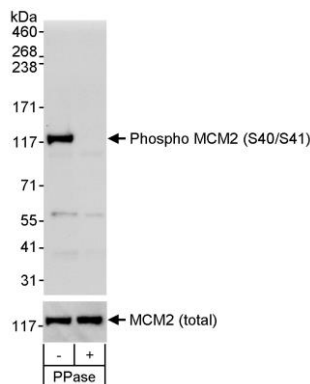
Immunohistochemistry 1:100 – 1:500. Epitope retrieval with citrate buffer pH 6.0 is recommended for FFPE tissue sections.

Flow Cytometry 0.1 µg per 1 X 10⁶ cells in a 150 µl volume

ADDITIONAL INFO <https://www.bethyl.com/product/A300-788A-T>

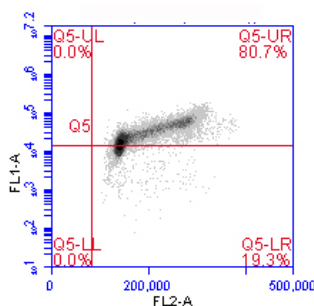
Use the link above to view SDS, a current list of citations, and other product specific information.

This document certifies that this product has met all of the quality control standards defined by Bethyl Laboratories, Inc.
Michael Spencer, PhD Date: June 6, 2022



Detection of human Phospho MCM2 (S40/S41) by western blot. *Samples:* Whole cell lysate (50 µg) from asynchronous HEK293T cells that was mock treated (-) or treated (+) with phosphatases (PPase). *Antibody:* Affinity purified rabbit anti-phospho MCM2 (S40/S41) antibody (Cat. No. A300-788A) used at 0.1 µg/ml. To examine total MCM2, the blot was stripped and then blotted with rabbit anti-MCM2 antibody (Cat. No. A300-191A) at 0.1 µg/ml. *Detection:* Chemiluminescence with exposure times of 30 seconds (upper and lower panels).

Detection of human Phospho MCM2 (S40/S41) by immunohistochemistry. *Samples:* FFPE serial sections of human colon carcinoma. Mock phosphatase treated section (left) and calf intestinal phosphatase-treated section (right). *Antibody:* Affinity purified rabbit anti-Phospho MCM2 (S40/S41) (Cat. No. A300-788A Lot 2) used at a dilution of 1:200 (1 µg/ml). *Detection:* DAB



Flow cytometric analysis of phospho-MCM2 (pS40/41). Jurkat cells were fixed in 1.5% PFA, and permeabilized in 90% MeOH. 1×10^6 cells were stained with 0.1 µg/ml anti-phospho-MCM2 (pS40/41) [A300-788A] in a 150 µl volume. DNA content was simultaneously analyzed via PI stain.