



# SZABO SCANDIC

Part of Europa Biosite

## Produktinformation



Forschungsprodukte & Biochemikalien



Zellkultur & Verbrauchsmaterial



Diagnostik & molekulare Diagnostik



Laborgeräte & Service

Weitere Information auf den folgenden Seiten!  
See the following pages for more information!



### Lieferung & Zahlungsart

siehe unsere [Liefer- und Versandbedingungen](#)

### Zuschläge

- Mindermengenzuschlag
- Trockeneiszuschlag
- Gefahrgutzuschlag
- Expressversand

### SZABO-SCANDIC HandelsgmbH

Quellenstraße 110, A-1100 Wien

T. +43(0)1 489 3961-0

F. +43(0)1 489 3961-7

[mail@szabo-scandic.com](mailto:mail@szabo-scandic.com)

[www.szabo-scandic.com](http://www.szabo-scandic.com)

[linkedin.com/company/szaboscandic](https://www.linkedin.com/company/szaboscandic) 

# Phospho MCM2 (S40/S41) Antibody

Rabbit Polyclonal

Antigen Affinity Purified

Protein ID NP\_004517.2

Catalog No. A300-788A

GeneID 4171

Lot No. A300-788A-2



|                       |  |
|-----------------------|--|
| APPLICATIONS          | WB, IHC, F   |
| SPECIES REACTIVITY    | Human  |
| AMOUNT                | 100 µl   |
| CONCENTRATION         | 200 µg/ml  |
| STORAGE/SHELF LIFE    | 2 – 8° C / 1 year from date of receipt   |
| PHYSICAL STATE        | Liquid   |
| BUFFER                | Tris-buffered Saline containing 0.1% BSA and 0.09% Sodium Azide  |
| ISOTYPE               | IgG  |
| ORIGIN                | USA  |
| PRODUCTION PROCEDURES | Antibody was affinity purified using an epitope specific to Phospho MCM2 (S40/S41) immobilized on solid support. |

Immunogen was a synthetic di-phosphorylated peptide, which represented a portion of human minichromosomal maintenance deficient 2 surrounding Serines 40 and 41 according to the numbering given in entry NP\_004517.2 (GeneID 4171).

Immunoglobulin concentration was determined by extinction coefficient: absorbance at 280 nm of 1.4 equals 1.0 mg of IgG.

**APPLICATIONS** Centrifuge tube to remove product from lid. Optimal working dilutions should be determined experimentally by the investigator. Prepare working dilution immediately before use.

Western Blot 1:1,000 – 1:5,000

Immunohistochemistry 1:100 – 1:500. Epitope retrieval with citrate buffer pH 6.0 is recommended for FFPE tissue sections.

Flow Cytometry 0.1 µg per 1 X 10<sup>6</sup> cells in a 150 µl volume

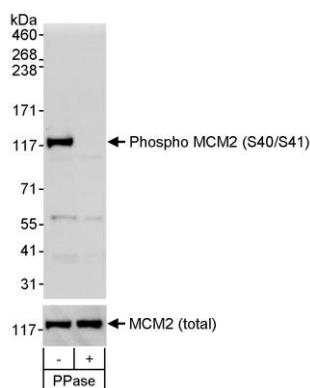
**APPLICATION NOTES** Western blot of lysates performed using standard western blot reagents and 4–8% SDS–PAGE.

**IHC HUMAN CONTROLS** Breast Carcinoma, Colon Carcinoma

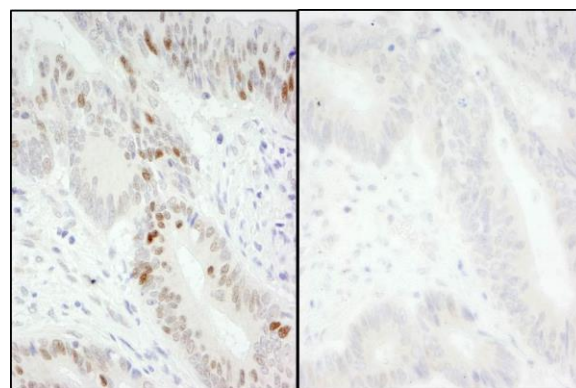
**ADDITIONAL INFO** <https://www.bethyl.com/product/A300-788A>

Use the link above to view SDS, a current list of citations, and other product specific information.

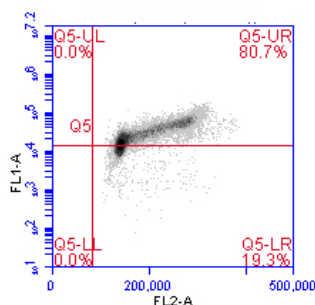
This document certifies that this product has met all of the quality control standards defined by Bethyl Laboratories, Inc.  
Eric McIntush, PhD | Chief Scientific Officer Date: June 21, 2019



**Detection of human Phospho MCM2 (S40/S41) by western blot.** *Samples:* Whole cell lysate (50 µg) from asynchronous HEK293T cells that was mock treated (-) or treated (+) with phosphatases (PPase). *Antibody:* Affinity purified rabbit anti-phospho MCM2 (S40/S41) antibody (Cat. No. A300-788A) used at 0.1 µg/ml. To examine total MCM2, the blot was stripped and then blotted with rabbit anti-MCM2 antibody (Cat. No. A300-191A) at 0.1 µg/ml. *Detection:* Chemiluminescence with exposure times of 30 seconds (upper and lower panels).



**Detection of human Phospho MCM2 (S40/S41) by immunohistochemistry.** *Samples:* FFPE serial sections of human colon carcinoma. Mock phosphatase treated section (left) and calf intestinal phosphatase-treated section (right). *Antibody:* Affinity purified rabbit anti-Phospho MCM2 (S40/S41) (Cat. No. A300-788A Lot 2) used at a dilution of 1:200 (1 µg/ml). *Detection:* DAB



**Flow cytometric analysis of phospho-MCM2 (pS40/41).** Jurkat cells were fixed in 1.5% PFA, and permeabilized in 90% MeOH.  $1 \times 10^6$  cells were stained with 0.1 µg/ml anti-phospho-MCM2 (pS40/41) [A300-788A] in a 150 µl volume. DNA content was simultaneously analyzed via PI stain.