



SZABO SCANDIC

Part of Europa Biosite

Produktinformation



Forschungsprodukte & Biochemikalien



Zellkultur & Verbrauchsmaterial



Diagnostik & molekulare Diagnostik



Laborgeräte & Service

Weitere Information auf den folgenden Seiten!
See the following pages for more information!



Lieferung & Zahlungsart

siehe unsere [Liefer- und Versandbedingungen](#)

Zuschläge

- Mindermengenzuschlag
- Trockeneiszuschlag
- Gefahrgutzuschlag
- Expressversand

SZABO-SCANDIC Handels GmbH

Quellenstraße 110, A-1100 Wien

T. +43(0)1 489 3961-0

F. +43(0)1 489 3961-7

mail@szabo-scandic.com

www.szabo-scandic.com

[linkedin.com/company/szaboscandic](https://www.linkedin.com/company/szaboscandic) 

SUPT6H Antibody

Rabbit Polyclonal

Antigen Affinity Purified

Protein ID NP_003161.2

Catalog No. A300-801A

GeneID 6830

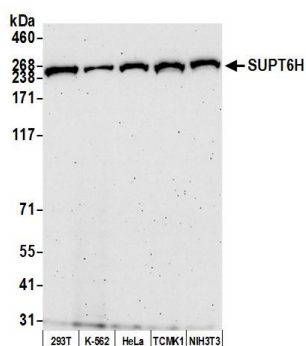
Lot No. A300-801A-2



APPLICATIONS	WB, IP, IHC						
SPECIES REACTIVITY	Human, Mouse						
AMOUNT	100 µl						
CONCENTRATION	200 µg/ml						
STORAGE/SHELF LIFE	2 – 8° C / 1 year from date of receipt						
PHYSICAL STATE	Liquid						
BUFFER	Tris-buffered Saline containing 0.1% BSA and 0.09% Sodium Azide						
ISOTYPE	IgG						
ORIGIN	USA						
PRODUCTION PROCEDURES	<p>Antibody was affinity purified using an epitope specific to SUPT6H immobilized on solid support.</p> <p>The epitope recognized by A300-801A maps to a region between residue 425 and 475 of human Suppressor of Ty 6 Homolog using the numbering given in entry NP_003161.2 (GeneID 6830).</p> <p>Immunoglobulin concentration was determined by extinction coefficient: absorbance at 280 nm of 1.4 equals 1.0 mg of IgG.</p>						
APPLICATIONS	<p>Centrifuge tube to remove product from lid. Optimal working dilutions should be determined experimentally by the investigator. Prepare working dilution immediately before use.</p> <table><tr><td>Western Blot</td><td>1:2,000 – 1:10,000</td></tr><tr><td>Immunoprecipitation</td><td>2 – 10 µg/mg lysate</td></tr><tr><td>Immunohistochemistry</td><td>1:100 to 1:500. Epitope retrieval with citrate buffer pH6.0 is recommended for FFPE tissue sections.</td></tr></table>	Western Blot	1:2,000 – 1:10,000	Immunoprecipitation	2 – 10 µg/mg lysate	Immunohistochemistry	1:100 to 1:500. Epitope retrieval with citrate buffer pH6.0 is recommended for FFPE tissue sections.
Western Blot	1:2,000 – 1:10,000						
Immunoprecipitation	2 – 10 µg/mg lysate						
Immunohistochemistry	1:100 to 1:500. Epitope retrieval with citrate buffer pH6.0 is recommended for FFPE tissue sections.						
APPLICATION NOTES	<p>Western blot of immunoprecipitates performed using Normal Pig Serum (Cat. No. S100-020), Goat anti-Rabbit Light Chain HRP Conjugate (Cat. No. A120-113P) and 4-8% SDS-PAGE (link to IP-western blot protocol in Additional Info section below).</p> <p>Western blot of lysates performed using standard western blot reagents and 4-8% SDS-PAGE.</p>						
IHC HUMAN CONTROLS	Breast Carcinoma, Colon Carcinoma, Ovarian Carcinoma, Small Cell Lung Cancer, Testicular Seminoma						
IHC MOUSE CONTROLS	Plasmacytoma, Squamous Cell Carcinoma, Teratoma						
ADDITIONAL INFO	<p>https://www.bethyl.com/product/A300-801A</p> <p>Use the link above to view SDS, a current list of citations, and other product specific information.</p> <p>IP-western blot protocol https://www.bethyl.com/content/protocol_IP_WB</p>						

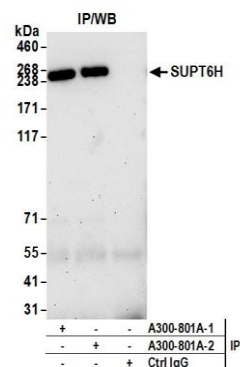
This document certifies that this product has met all of the quality control standards defined by Bethyl Laboratories, Inc.
Eric McIntush, PhD | Chief Scientific Officer

Date: October 30, 2019



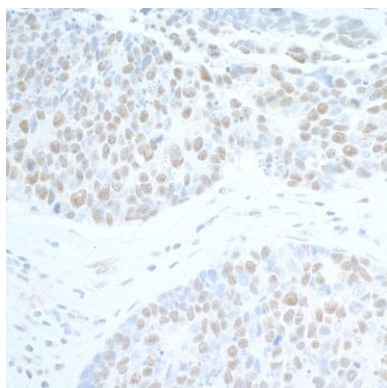
Detection of human and mouse SUPT6H by western blot.

Samples: Whole cell lysate (50 µg) from HEK293T, K-562, HeLa, TCMK-1, and NIH 3T3 cells prepared using NETN lysis buffer. **Antibody:** Affinity purified rabbit anti-SUPT6H antibody A300-801A (lot A300-801A-2) used for WB at 0.04 µg/ml. **Detection:** Chemiluminescence with an exposure time of 3 minutes.



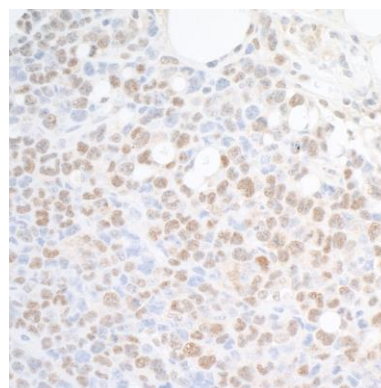
Detection of human SUPT6H by western blot of immunoprecipitates.

Samples: Whole cell lysate (1.0 mg per IP reaction; 20% of IP loaded) from HEK293T cells prepared using NETN lysis buffer. **Antibodies:** Affinity purified rabbit anti-SUPT6H antibody A300-801A (lot A300-801A-2) used for IP at 6 µg per reaction. SUPT6H was also immunoprecipitated by a previous lot of this antibody (lot A300-801A-1). For blotting immunoprecipitated SUPT6H, A300-801A was used at 0.04 µg/ml. **Detection:** Chemiluminescence with an exposure time of 75 seconds.



Detection of human SUPT6H by immunohistochemistry.

Sample: FFPE section of human breast carcinoma. **Antibody:** Affinity purified rabbit anti-SUPT6H (Cat. No. A300-801A lot 2) used at a dilution of 1:200 (1 µg/ml). **Detection:** DAB



Detection of mouse SUPT6H by immunohistochemistry.

Sample: FFPE section of mouse plasmacytoma. **Antibody:** Affinity purified rabbit anti-SUPT6H (Cat. No. A300-801A lot 2) used at a dilution of 1:200 (1 µg/ml). **Detection:** DAB