



# SZABO SCANDIC

Part of Europa Biosite

## Produktinformation



Forschungsprodukte & Biochemikalien



Zellkultur & Verbrauchsmaterial



Diagnostik & molekulare Diagnostik



Laborgeräte & Service

Weitere Information auf den folgenden Seiten!  
See the following pages for more information!



### Lieferung & Zahlungsart

siehe unsere [Liefer- und Versandbedingungen](#)

### Zuschläge

- Mindermengenzuschlag
- Trockeneiszuschlag
- Gefahrgutzuschlag
- Expressversand

### SZABO-SCANDIC HandelsgmbH

Quellenstraße 110, A-1100 Wien

T. +43(0)1 489 3961-0

F. +43(0)1 489 3961-7

[mail@szabo-scandic.com](mailto:mail@szabo-scandic.com)

[www.szabo-scandic.com](http://www.szabo-scandic.com)

[linkedin.com/company/szaboscandic](https://www.linkedin.com/company/szaboscandic) 

# CRABP2 Antibody

Rabbit Polyclonal

Antigen Affinity Purified

Protein ID NP\_001869.1

Catalog No. A300-809A-T

GeneID 1382

Lot No. A300-809A-T-1

<b>APPLICATIONS</b>	WB, IHC
<b>SPECIES REACTIVITY</b>	Human
<b>AMOUNT</b>	10 µl
<b>CONCENTRATION</b>	200 µg/ml
<b>STORAGE/SHELF LIFE</b>	2 – 8°C / 1 year from date of receipt
<b>PHYSICAL STATE</b>	Liquid
<b>BUFFER</b>	Tris-buffered Saline containing 0.1% BSA and 0.09% Sodium Azide
<b>ISOTYPE</b>	IgG
<b>ORIGIN</b>	USA
<b>PRODUCTION PROCEDURES</b>	Antibody was affinity purified using an epitope specific to CRABP2 immobilized on solid support.

The epitope recognized by A300-809A-T maps to a region between residue 80 and the C-terminus (residue 138) of human Cellular Retinoic Acid Binding Protein 2 using the numbering given in entry NP\_001869.1 (GeneID 1382).

**APPLICATIONS** Centrifuge tube to remove product from lid. Optimal working dilutions should be determined experimentally by the investigator. Prepare working dilution immediately before use.

Western Blot 1:2,000 – 1:10,000

Immunoprecipitation Not recommended. While trace amounts of CRABP2 can be immunoprecipitated by A300-809A, the efficiency is very low.

Immunohistochemistry 1:200 – 1:1,000. Epitope retrieval with citrate buffer pH 6.0 is recommended for FFPE tissue sections.

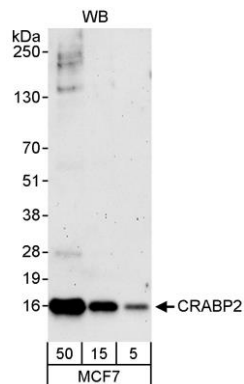
**ADDITIONAL INFO** <https://www.bethyl.com/product/A300-809A-T>

Use the link above to view SDS, a current list of citations, and other product specific information.

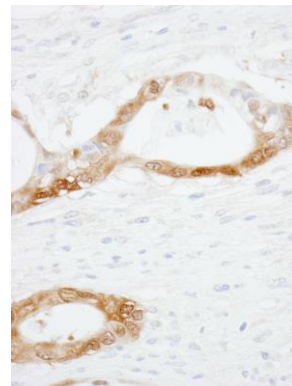
This document certifies that this product has met all of the quality control standards defined by Bethyl Laboratories, Inc.

Michael Spencer, PhD

Date: June 6, 2022



**Detection of human CRABP2 by western blot.** *Samples:* Whole cell lysate (5, 15 and 50 µg) from MCF-7 cells.  
*Antibodies:* Affinity purified rabbit anti-CRABP2 antibody (Cat. No. A300-809A) used for WB at 0.04 µg/ml.  
*Detection:* Chemiluminescence with an exposure time of 3 minutes.



**Detection of human CRABP2 by immunohistochemistry.** *Sample:* FFPE section of human prostate carcinoma.  
*Antibody:* Affinity purified rabbit anti-CRABP2 (Cat. No. A300-809A) used at a dilution of 1:1,000 (1 µg/ml).  
*Detection:* DAB