



SZABO SCANDIC

Part of Europa Biosite

Produktinformation



Forschungsprodukte & Biochemikalien



Zellkultur & Verbrauchsmaterial



Diagnostik & molekulare Diagnostik



Laborgeräte & Service

Weitere Information auf den folgenden Seiten!
See the following pages for more information!



Lieferung & Zahlungsart

siehe unsere [Liefer- und Versandbedingungen](#)

Zuschläge

- Mindermengenzuschlag
- Trockeneiszuschlag
- Gefahrgutzuschlag
- Expressversand

SZABO-SCANDIC Handels GmbH

Quellenstraße 110, A-1100 Wien

T. +43(0)1 489 3961-0

F. +43(0)1 489 3961-7

mail@szabo-scandic.com

www.szabo-scandic.com

[linkedin.com/company/szaboscandic](https://www.linkedin.com/company/szaboscandic) 

BAF57/SMARCE1 Antibody

Rabbit Polyclonal

Antigen Affinity Purified	Protein ID	NP_003070.3
Catalog No. A300-810A-T	GeneID	6605
Lot No. A300-810A-T-2		

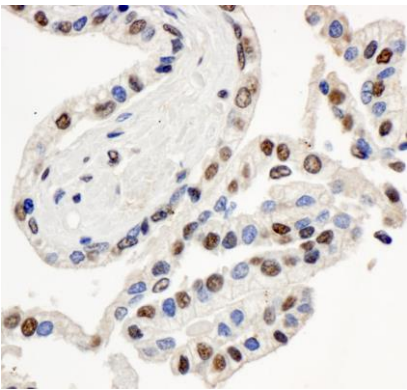
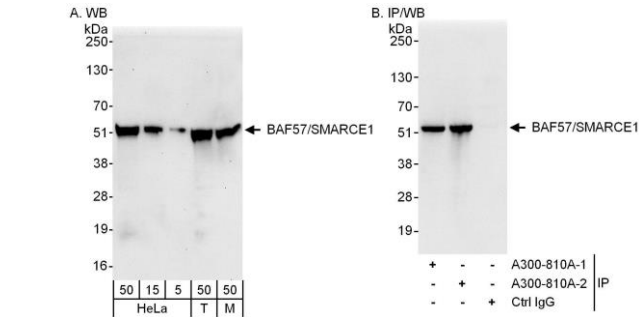
APPLICATIONS	WB, IP, IHC
SPECIES REACTIVITY	Human, Mouse
AMOUNT	10 µl
CONCENTRATION	1000 µg/ml
STORAGE/SHELF LIFE	2 – 8°C / 1 year from date of receipt
PHYSICAL STATE	Liquid
BUFFER	Tris-citrate/phosphate buffer, pH 7 to 8 containing 0.09% Sodium Azide
ISOTYPE	IgG
ORIGIN	USA
PRODUCTION PROCEDURES	Antibody was affinity purified using an epitope specific to BAF57/SMARCE1 immobilized on solid support. The epitope recognized by A300-810A-T maps to a region between residue 360 and the C-terminus (residue 411) of human BRG1-Associated Factor 57 (SWI/SNF-Related Matrix-Associated Actin-Dependent Regulator of Chromatin E1) using the numbering given in entry NP_003070.3 (GeneID 6605).

APPLICATIONS Centrifuge tube to remove product from lid. Optimal working dilutions should be determined experimentally by the investigator. Prepare working dilution immediately before use.

Western Blot	1:2,000 – 1:10,000
Immunoprecipitation	2 – 5 µg/mg lysate
Immunohistochemistry	1:500 – 1:2,000. Epitope retrieval with citrate buffer pH 6.0 is recommended for FFPE tissue sections.

ADDITIONAL INFO <https://www.bethyl.com/product/A300-810A-T>
Use the link above to view SDS, a current list of citations, and other product specific information.
IP-western blot protocol: https://www.bethyl.com/content/protocol_IP_WB

This document certifies that this product has met all of the quality control standards defined by Bethyl Laboratories, Inc.
Michael Spencer, PhD Date: June 6, 2022



Detection of human and mouse BAF57/SMARCE1 by western blot (h&m) and immunoprecipitation (h).
Samples: Whole cell lysate from HeLa (5, 15 and 50 µg for WB; 1 mg for IP, 20% of IP loaded), HEK293T (T; 50 µg) and mouse NIH 3T3 (M; 50 µg) cells. *Antibody:* Affinity purified rabbit anti-BAF57/SMARCE1 antibody A300-810A (lot A300-810A-2) used for WB at 0.1 µg/ml (A) and at 1 µg/ml (B) and used for IP at 3 µg/mg lysate (B). BAF57/SMARCE1 was also immunoprecipitated by a previous lot (lot A300-810A-1) of this antibody. *Detection:* Chemiluminescence with exposure times of 30 seconds (A) and 3 seconds (B).

Detection of human BAF57/SMARCE1 by immunohistochemistry. *Sample:* FFPE section of human prostate carcinoma. *Antibody:* Affinity purified rabbit anti-BAF57/SMARCE1 (Cat. No. A300-810A Lot2) used at a dilution of 1:1,000 (1µg/ml). *Detection:* DAB