



# SZABO SCANDIC

Part of Europa Biosite

## Produktinformation



Forschungsprodukte & Biochemikalien



Zellkultur & Verbrauchsmaterial



Diagnostik & molekulare Diagnostik



Laborgeräte & Service

Weitere Information auf den folgenden Seiten!  
See the following pages for more information!



### Lieferung & Zahlungsart

siehe unsere [Liefer- und Versandbedingungen](#)

### Zuschläge

- Mindermengenzuschlag
- Trockeneiszuschlag
- Gefahrgutzuschlag
- Expressversand

### SZABO-SCANDIC HandelsgmbH

Quellenstraße 110, A-1100 Wien

T. +43(0)1 489 3961-0

F. +43(0)1 489 3961-7

[mail@szabo-scandic.com](mailto:mail@szabo-scandic.com)

[www.szabo-scandic.com](http://www.szabo-scandic.com)

[linkedin.com/company/szaboscandic](https://www.linkedin.com/company/szaboscandic)



# BRG1 /SMARCA4 Antibody

Rabbit Polyclonal

Antigen Affinity Purified	RefSeq ID	NP_003063.2
Catalog No. A300-813A	Uniprot ID	P51532
Lot No. A300-813A-5	GeneID	6597

<b>APPLICATIONS</b>	WB, IP, IHC
<b>SPECIES REACTIVITY</b>	Human, Mouse
<b>AMOUNT</b>	100 µl
<b>CONCENTRATION</b>	200 µg/ml
<b>STORAGE/SHELF LIFE</b>	2 – 8°C / 1 year from date of receipt
<b>PHYSICAL STATE</b>	Liquid
<b>BUFFER</b>	Tris-buffered Saline containing 0.1% BSA and 0.09% Sodium Azide
<b>ISOTYPE</b>	IgG
<b>ORIGIN</b>	USA
<b>PRODUCTION PROCEDURES</b>	Antibody was affinity purified using an epitope specific to BRG1 /SMARCA4 immobilized on solid support.

The epitope recognized by A300-813A maps to a region between residue 75 and 125 of human BRM/SWI2-Related Gene 1 (SWI/SNF Related, Matrix Associated, Actin Dependent Regulator of Chromatin, Subfamily A, member 4) using the numbering given in entry NP\_003063.2 (GeneID 6597).

Immunoglobulin concentration was determined by extinction coefficient: absorbance at 280 nm of 1.4 equals 1.0 mg of IgG.

**APPLICATIONS** Centrifuge tube to remove product from lid. Optimal working dilutions should be determined experimentally by the investigator. Prepare working dilution immediately before use.

Western Blot 1:2,000 – 1:10,000

Immunoprecipitation 2 – 10 µg/mg lysate

Immunohistochemistry 1:500 to 1:2,000. Epitope retrieval with citrate buffer pH6.0 is recommended for FFPE tissue sections.

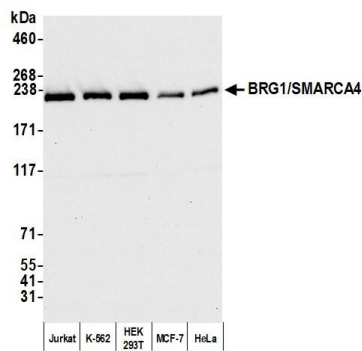
**IHC HUMAN CONTROLS** Breast Carcinoma, Non-Small Cell Lung Cancer, Ovarian Carcinoma

**IHC MOUSE CONTROLS** Renal Cell Carcinoma, CT26 cells

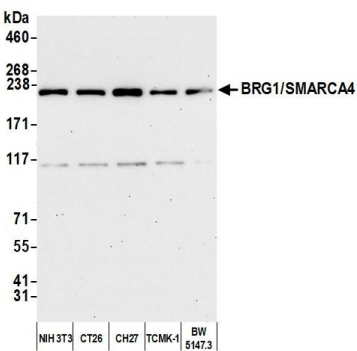
**ADDITIONAL INFO** <https://www.fortislifesciences.com/p/A300-813A>

Use the link above to view SDS, a current list of citations, and other product specific information.

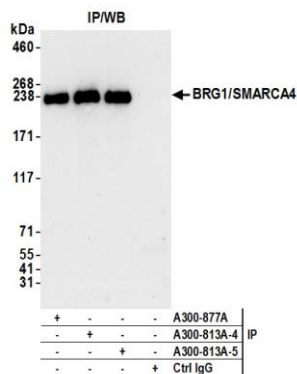
This document certifies that this product has met all of the quality control standards defined by Bethyl Laboratories, Inc.  
Michael Spencer, PhD Date: February 27, 2023



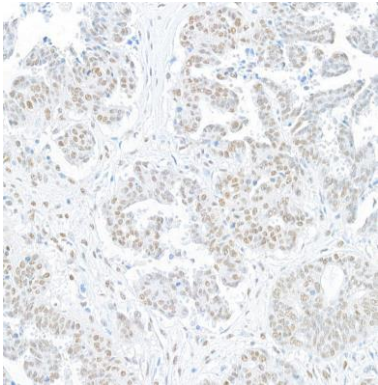
**Detection of human BRG1/SMARCA4 by western blot.**  
*Samples:* Whole cell lysate (10 µg) from Jurkat, K-562, HEK293T, MCF-7, and HeLa cells prepared using NETN lysis buffer. *Antibody:* Affinity purified rabbit anti-BRG1/SMARCA4 antibody (A300-813A lot 5) used for WB at 0.04 µg/ml. *Detection:* Chemiluminescence with an exposure time of 10 seconds.



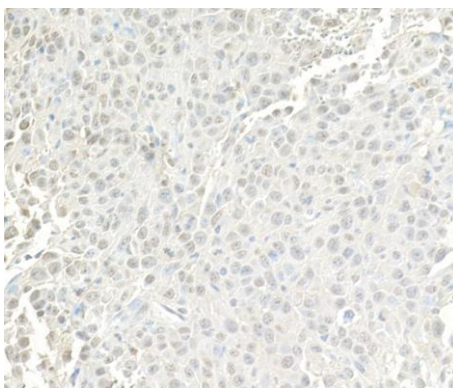
**Detection of mouse BRG1/SMARCA4 by western blot.**  
*Samples:* Whole cell lysate (10 µg) from NIH 3T3, CT26, CH27, TCMK-1, and BW5147.3 cells prepared using NETN lysis buffer. *Antibody:* Affinity purified rabbit anti-BRG1/SMARCA4 antibody (A300-813A lot 5) used for WB at 0.04 µg/ml. *Detection:* Chemiluminescence with an exposure time of 30 seconds.



**Detection of human BRG1/SMARCA4 by western blot of immunoprecipitates.** *Samples:* Whole cell lysate (1.0 mg per IP reaction; 5% of IP loaded) from HEK293T cells prepared using NETN lysis buffer. *Antibodies:* Affinity purified rabbit anti-BRG1/SMARCA4 antibody (A300-813A lot 5) used for IP at 6 µg per reaction. BRG1/SMARCA4 was also immunoprecipitated by a previous lot of this antibody (A300-813A lot 4) and another antibody against a different epitope of BRG1/SMARCA4 (A300-877A). For blotting immunoprecipitated BRG1/SMARCA4, A300-813A was used at 0.04 µg/ml. *Detection:* Chemiluminescence with an exposure time of 10 seconds.



**Detection of human BRG1/SMARCA4 by immunohistochemistry.** *Sample:* FFPE section of human ovarian carcinoma. *Antibody:* Affinity purified rabbit anti-BRG1/SMARCA4 (Cat. No. A300-813A lot 5) used at a dilution of 1:1,000 (0.2µg/ml). *Detection:* DAB



**Detection of mouse BRG1/SMARCA4 by immunohistochemistry.** *Sample:* FFPE section of mouse renal cell carcinoma. *Antibody:* Affinity purified rabbit anti-BRG1/SMARCA4 (Cat. No. A300-813A lot 5) used at a dilution of 1:1,000 (0.2µg/ml). *Detection:* DAB