



# SZABO SCANDIC

Part of Europa Biosite

## Produktinformation



Forschungsprodukte & Biochemikalien



Zellkultur & Verbrauchsmaterial



Diagnostik & molekulare Diagnostik



Laborgeräte & Service

Weitere Information auf den folgenden Seiten!  
See the following pages for more information!



### Lieferung & Zahlungsart

siehe unsere [Liefer- und Versandbedingungen](#)

### Zuschläge

- Mindermengenzuschlag
- Trockeneiszuschlag
- Gefahrgutzuschlag
- Expressversand

### SZABO-SCANDIC Handels GmbH

Quellenstraße 110, A-1100 Wien

T. +43(0)1 489 3961-0

F. +43(0)1 489 3961-7

[mail@szabo-scandic.com](mailto:mail@szabo-scandic.com)

[www.szabo-scandic.com](http://www.szabo-scandic.com)

[linkedin.com/company/szaboscandic](https://www.linkedin.com/company/szaboscandic)



# Histone H3 Antibody

Rabbit Polyclonal

Antigen Affinity Purified	RefSeq ID	NP_003520.1
Catalog No. A300-823A	Uniprot ID	P68431
Lot No. 4	GeneID	8350

<b>APPLICATIONS</b>	WB, IP, IHC, IHC-IF
<b>SPECIES REACTIVITY</b>	Human, Mouse
<b>PRESUMED REACTIVITY</b>	Based on 100% sequence identity, this antibody is predicted to react with Rat, D. melanogaster, Zebrafish, X. laevis, X. tropicalis, Chicken, Bovine, Rabbit, Pig and Orangutan
<b>AMOUNT</b>	100 µl
<b>CONCENTRATION</b>	200 µg/ml
<b>STORAGE/SHELF LIFE</b>	2 – 8°C / 1 year from date of receipt
<b>PHYSICAL STATE</b>	Liquid
<b>BUFFER</b>	Tris-buffered Saline containing 0.1% BSA and 0.09% Sodium Azide
<b>ISOTYPE</b>	IgG
<b>ORIGIN</b>	USA
<b>PRODUCTION PROCEDURES</b>	Antibody was affinity purified using an epitope specific to Histone H3 immobilized on solid support.

The epitope recognized by A300-823A maps to a region between residue 100 and the C-terminus (residue 135) of human Histone H3 using the numbering given in entry NP\_003520.1 (GeneID 8350).

Immunoglobulin concentration was determined using Beer's Law where 1mg/mL IgG has an A280 of 1.4.

<b>APPLICATIONS</b>	Centrifuge tube to remove product from lid. Optimal working dilutions should be determined experimentally by the investigator. Prepare working dilution immediately before use.
---------------------	---------------------------------------------------------------------------------------------------------------------------------------------------------------------------------

Western Blot	1:2000 – 1:10,000
Immunoprecipitation	6 µg/mg lysate
Immunohistochemistry	1:100 to 1:500. Epitope retrieval with citrate buffer pH 6.0 or Tris-EDTA pH 9.0 is recommended for FFPE tissue sections.
Immunofluorescence (IHC)	1:100 – 1:500

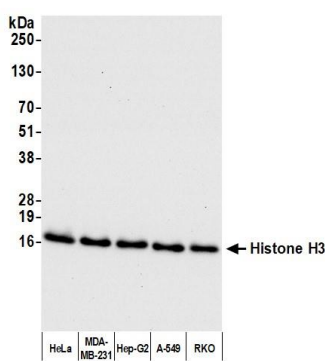
<b>IHC HUMAN CONTROLS</b>	Breast Carcinoma, Colon Carcinoma, Ovarian Carcinoma, Prostate Carcinoma, Stomach Adenocarcinoma, Testicular Seminoma
---------------------------	-----------------------------------------------------------------------------------------------------------------------

<b>IHC MOUSE CONTROLS</b>	Renal Cell Carcinoma, Teratoma
---------------------------	--------------------------------

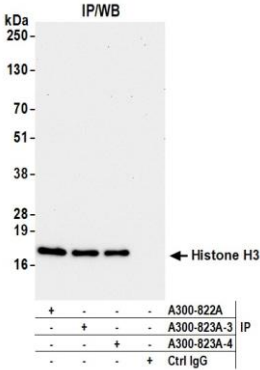
<b>ADDITIONAL INFO</b>	<a href="https://www.fortislifesciences.com/p/A300-823A">https://www.fortislifesciences.com/p/A300-823A</a>
------------------------	-------------------------------------------------------------------------------------------------------------

Use the link above to view SDS, a current list of citations, and other product specific information.

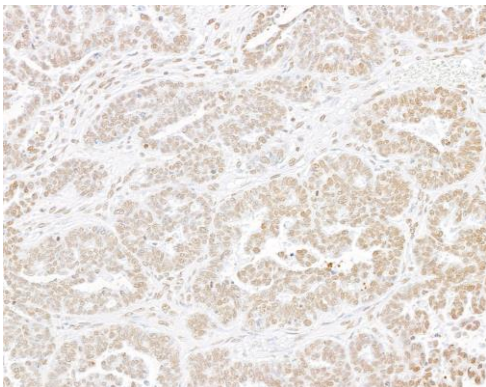
This document certifies that this product has met all of the quality control standards defined by Bethyl Laboratories, Inc.  
Michael Spencer, PhD Date: March 18, 2024



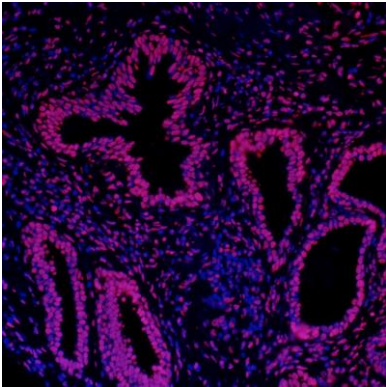
**Detection of human Histone H3 by western blot.**  
*Samples:* Whole cell lysate (10 µg) from HeLa Histone Extract, MDA-MB-231, Hep-G2, A-549, and RKO cells prepared using NETN lysis buffer. *Antibody:* Affinity purified rabbit anti-Histone H3 antibody (A300-823A lot 4) used for WB at 0.04 µg/ml. *Detection:* Chemiluminescence with an exposure time of 10 seconds.



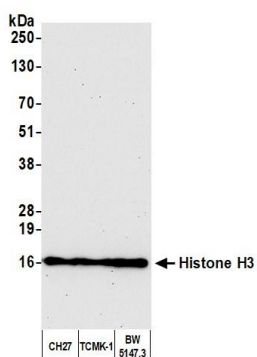
**Detection of human Histone H3 by western blot of immunoprecipitates.** *Samples:* Whole cell lysate (1 mg per IP; 5% of IP loaded) from HeLa cells histone extract. *Antibodies:* Affinity purified rabbit anti-Histone H3 antibody (A300-823A lot 4) used for IP at 6 µg per reaction. Histone H3 was also immunoprecipitated by a previous lot of this antibody (A300-823A lot 3) and a second antibody against a different epitope of Histone H3 (A300-822A). For blotting immunoprecipitated Histone H3, A300-823A was used at 0.04 µg/ml. *Detection:* Chemiluminescence with an exposure time of 75 seconds.



**Detection of human Histone H3 by immunohistochemistry.** *Sample:* FFPE section of human ovarian carcinoma. *Antibody:* Affinity purified rabbit anti-Histone H3 (A300-832A Lot 4) used at a dilution of 1:200 (1 µg/ml). *Detection:* DAB

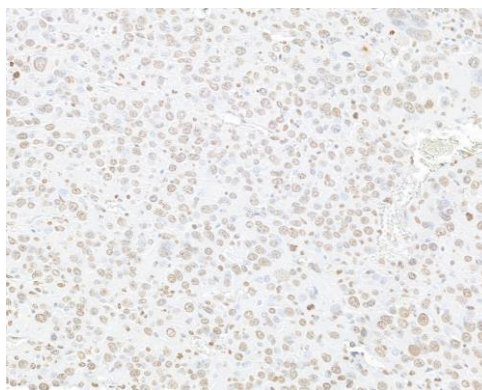


**Detection of human Histone H3 by immunohistochemistry.** *Sample:* FFPE section of human prostate carcinoma. *Antibody:* Affinity purified rabbit anti-Histone H3 (A300-823A) used at a dilution of 1:200 (1 µg/ml). *Detection:* Red-fluorescent goat anti-rabbit IgG-heavy and light chain, cross-adsorbed Antibody DyLight® 594 Conjugated (Cat. No. A120-201D4) used at a dilution of 1:100

**Detection of mouse Histone H3 by western blot.**

*Samples:* Whole cell lysate (10 µg) from CH27, TCMK-1, and BW5147.3 cells prepared using NETN lysis buffer.

*Antibody:* Affinity purified rabbit anti-Histone H3 antibody (A300-823A lot 4) used for WB at 0.04 µg/ml. *Detection:* Chemiluminescence with an exposure time of 30 seconds.

**Detection of human Histone H3 by immunohistochemistry.**

*Sample:* FFPE section of mouse renal cell carcinoma. *Antibody:* Affinity purified rabbit anti-Histone H3 (A300-832A Lot 4) used at a dilution of 1:200 (1 µg/ml). *Detection:* DAB