



# SZABO SCANDIC

Part of Europa Biosite

## Produktinformation



Forschungsprodukte & Biochemikalien



Zellkultur & Verbrauchsmaterial



Diagnostik & molekulare Diagnostik



Laborgeräte & Service

Weitere Information auf den folgenden Seiten!  
See the following pages for more information!



### Lieferung & Zahlungsart

siehe unsere [Liefer- und Versandbedingungen](#)

### Zuschläge

- Mindermengenzuschlag
- Trockeneiszuschlag
- Gefahrgutzuschlag
- Expressversand

### SZABO-SCANDIC Handels GmbH

Quellenstraße 110, A-1100 Wien

T. +43(0)1 489 3961-0

F. +43(0)1 489 3961-7

[mail@szabo-scandic.com](mailto:mail@szabo-scandic.com)

[www.szabo-scandic.com](http://www.szabo-scandic.com)

[linkedin.com/company/szaboscandic](https://www.linkedin.com/company/szaboscandic)



# PPP4C Antibody

Rabbit Polyclonal

Antigen Affinity Purified	RefSeq ID	NP_002711.1
Catalog No. A300-835A	Uniprot ID	P60510
Lot No. 4	GeneID	5531

<b>APPLICATIONS</b>	WB, IP, IHC
<b>SPECIES REACTIVITY</b>	Human, Mouse
<b>PRESUMED REACTIVITY</b>	Based on 100% sequence identity, this antibody is predicted to react with Rat, Bovine, Rabbit and Orangutan
<b>AMOUNT</b>	100 µl
<b>CONCENTRATION</b>	200 µg/ml
<b>STORAGE/SHELF LIFE</b>	2 – 8°C / 1 year from date of receipt
<b>PHYSICAL STATE</b>	Liquid
<b>BUFFER</b>	Tris-buffered Saline containing 0.1% BSA and 0.09% Sodium Azide
<b>ISOTYPE</b>	IgG
<b>ORIGIN</b>	USA
<b>PRODUCTION PROCEDURES</b>	Antibody was affinity purified using an epitope specific to PPP4C immobilized on solid support.

The epitope recognized by A300-835A maps to a region between residue 1 and 50 of human Protein Phosphatase 4, Catalytic Subunit using the numbering given in entry NP\_002711.1 (GeneID 5531).

Immunoglobulin concentration was determined using Beer's Law where 1 mg/mL IgG has an A280 of 1.4.

**APPLICATIONS** Centrifuge tube to remove product from lid. Optimal working dilutions should be determined experimentally by the investigator. Prepare working dilution immediately before use.

Western Blot	1:2,000 – 1:10,000
Immunoprecipitation	2 – 10 µg/mg lysate
Immunohistochemistry	1:200 to 1:1000. Epitope retrieval with citrate buffer pH6.0 is recommended for FFPE tissue sections.

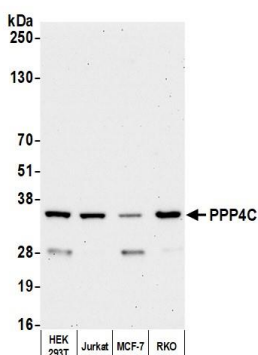
**IHC HUMAN CONTROLS** Breast Carcinoma, Colon Carcinoma, Laryngeal Squamous Cell Carcinoma, Metastatic Lymph Node, Non-Small Cell Lung Cancer, Ovarian Carcinoma, Pancreatic Islet Cell Tumor, Prostate Carcinoma, Testicular Seminoma

**IHC MOUSE CONTROLS** Renal Cell Carcinoma, Squamous Cell Carcinoma

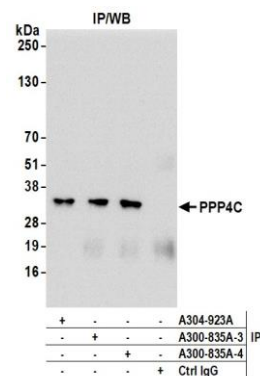
**ADDITIONAL INFO** <https://www.fortislifesciences.com/p/A300-835A>

Use the link above to view SDS, a current list of citations, and other product specific information.

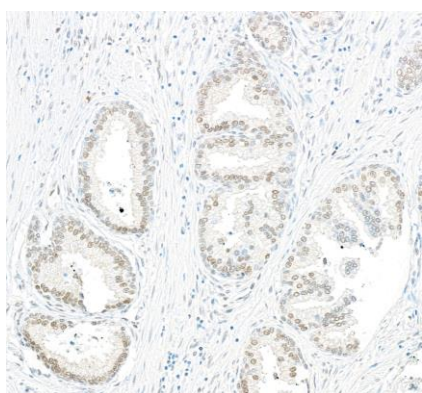
This document certifies that this product has met all of the quality control standards defined by Bethyl Laboratories, Inc.  
Michael Spencer, PhD Date: December 12, 2023



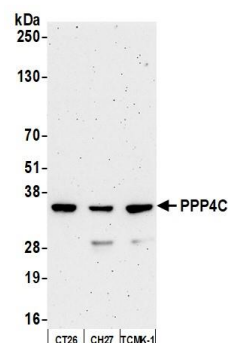
**Detection of human PPP4C by western blot.** *Samples:* Whole cell lysate (10 µg) from HEK293T, Jurkat, MCF-7, and RKO cells prepared using NETN lysis buffer. *Antibody:* Affinity purified rabbit anti-PPP4C antibody (A300-835A lot 4) used for WB at 0.04 µg/ml. *Detection:* Chemiluminescence with an exposure time of 30 seconds.



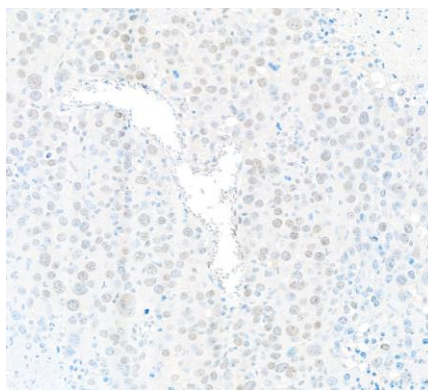
**Detection of human PPP4C by western blot of immunoprecipitates.** *Samples:* Whole cell lysate (1.0 mg per IP reaction; 15% of IP loaded) from HEK293T cells prepared using NETN lysis buffer. *Antibodies:* Affinity purified rabbit anti-PPP4C antibody (A300-835A lot 4) used for IP at 6 µg per reaction. PPP4C was also immunoprecipitated by a previous lot of this antibody (A300-835A lot 3) and a second antibody against a different epitope of PPP4C (A304-923A). For blotting immunoprecipitated PPP4C, A300-835A was used at 0.1 µg/ml. *Detection:* Chemiluminescence with an exposure time of 30 seconds.



**Detection of human PPP4C by immunohistochemistry.** *Sample:* FFPE sections of human prostate carcinoma. *Antibody:* Affinity purified rabbit anti-PPP4C (A300-835A Lot 4) used at a dilution of 1:1,000 (0.2 µg/ml). *Detection:* DAB



**Detection of mouse PPP4C by western blot.** *Samples:* Whole cell lysate (10 µg) from CT26, CH27, and TCMK-1 cells prepared using NETN lysis buffer. *Antibody:* Affinity purified rabbit anti-PPP4C antibody (A300-835A lot 4) used for WB at 0.04 µg/ml. *Detection:* Chemiluminescence with an exposure time of 3 minutes.

**Detection of mouse PPP4C by immunohistochemistry.**

*Sample:* FFPE sections of mouse renal cell carcinoma.

*Antibody:* Affinity purified rabbit anti-PPP4C (A300-835A Lot 4) used at a dilution of 1:1,000 (0.2 µg/ml). *Detection:* DAB