



SZABO SCANDIC

Part of Europa Biosite

Produktinformation



Forschungsprodukte & Biochemikalien



Zellkultur & Verbrauchsmaterial



Diagnostik & molekulare Diagnostik



Laborgeräte & Service

Weitere Information auf den folgenden Seiten!
See the following pages for more information!



Lieferung & Zahlungsart

siehe unsere [Liefer- und Versandbedingungen](#)

Zuschläge

- Mindermengenzuschlag
- Trockeneiszuschlag
- Gefahrgutzuschlag
- Expressversand

SZABO-SCANDIC Handels GmbH

Quellenstraße 110, A-1100 Wien

T. +43(0)1 489 3961-0

F. +43(0)1 489 3961-7

mail@szabo-scandic.com

www.szabo-scandic.com

[linkedin.com/company/szaboscandic](https://www.linkedin.com/company/szaboscandic) 

CoAA Antibody

Rabbit Polyclonal

Antigen Affinity Purified	RefSeq ID	NP_006319.1
Catalog No. A300-845A-T	Uniprot ID	Q96PK6
Lot No. 3	GeneID	10432

APPLICATIONS	WB, IP, IHC
SPECIES REACTIVITY	Human
PRESUMED REACTIVITY	Based on 100% sequence identity, this antibody is predicted to react with Mouse, Bovine and Orangutan
AMOUNT	10 µl
CONCENTRATION	1000 µg/ml
STORAGE/SHELF LIFE	2 – 8°C / 1 year from date of receipt
PHYSICAL STATE	Liquid
BUFFER	Tris-citrate/phosphate buffer, pH 7 to 8 containing 0.09% Sodium Azide
ISOTYPE	IgG
ORIGIN	USA
PRODUCTION PROCEDURES	Antibody was affinity purified using an epitope specific to CoAA immobilized on solid support.

The epitope recognized by A300-845A-T maps to a region between residue 550 and 600 of human CoActivator Activator (RNA Binding Motif 14) using the numbering given in entry NP_006319.1 (GeneID 10432).

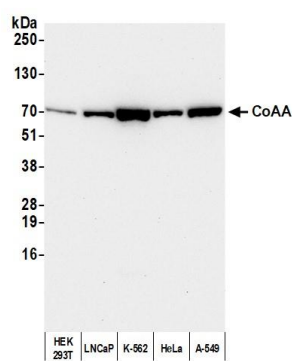
Immunoglobulin concentration was determined using Beer's Law where 1mg/mL IgG has an A280 of 1.4.

APPLICATIONS	Centrifuge tube to remove product from lid. Optimal working dilutions should be determined experimentally by the investigator. Prepare working dilution immediately before use.
	Western Blot 1:2000 – 1:10000
	Immunoprecipitation 6 µg/mg lysate
	Immunohistochemistry 1:1,000 to 1:5,000. Epitope retrieval with citrate buffer pH6.0 is recommended for FFPE tissue sections.

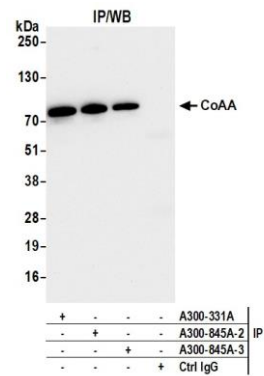
IHC HUMAN CONTROLS	Bone Marrow-Metastatic Carcinoma, Breast Carcinoma, Colon Carcinoma, Metastatic Lymph Node, Ovarian Carcinoma, Testicular Seminoma
---------------------------	--

ADDITIONAL INFO	https://www.fortislifesciences.com/p/A300-845A-T Use the link above to view SDS, a current list of citations, and other product specific information.
------------------------	---

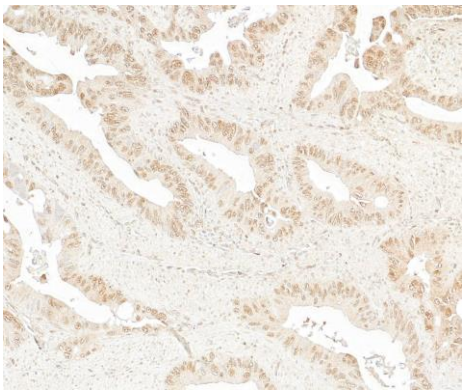
This document certifies that this product has met all of the quality control standards defined by Bethyl Laboratories, Inc.
Michael Spencer, PhD Date: June 12, 2024



Detection of human CoAA by western blot. *Samples:* Whole cell lysate (25 µg) from HEK293T, LNCaP, K-562, HeLa, and A-549 cells prepared using NETN lysis buffer. *Antibody:* Affinity purified rabbit anti-CoAA antibody (A300-845A lot 3) used for WB at 0.1 µg/ml. *Detection:* Chemiluminescence with an exposure time of 75 seconds.



Detection of human CoAA by western blot of immunoprecipitates. *Samples:* Whole cell lysate (1.0 mg per IP reaction; 20% of IP loaded) from HeLa cells prepared using NETN lysis buffer. *Antibodies:* Affinity purified rabbit anti-CoAA antibody (A300-845A lot 3) used for IP at 6 µg per reaction. CoAA was also immunoprecipitated by a previous lot of this antibody (A300-845A lot 2) and a second antibody against a different epitope of CoAA (A300-331A). For blotting immunoprecipitated CoAA, A300-845A was used at 0.4 µg/ml. *Detection:* Chemiluminescence with an exposure time of 30 seconds.



Detection of human CoAA by immunohistochemistry. *Sample:* FFPE section of colon carcinoma. *Antibody:* Affinity purified rabbit anti-CoAA antibody (A300-845A lot 3). *Secondary:* HRP-conjugated goat anti-rabbit IgG (A120-501P).