



SZABO SCANDIC

Part of Europa Biosite

Produktinformation



Forschungsprodukte & Biochemikalien



Zellkultur & Verbrauchsmaterial



Diagnostik & molekulare Diagnostik



Laborgeräte & Service

Weitere Information auf den folgenden Seiten!
See the following pages for more information!



Lieferung & Zahlungsart

siehe unsere [Liefer- und Versandbedingungen](#)

Zuschläge

- Mindermengenzuschlag
- Trockeneiszuschlag
- Gefahrgutzuschlag
- Expressversand

SZABO-SCANDIC HandelsgmbH

Quellenstraße 110, A-1100 Wien

T. +43(0)1 489 3961-0

F. +43(0)1 489 3961-7

mail@szabo-scandic.com

www.szabo-scandic.com

[linkedin.com/company/szaboscandic](https://www.linkedin.com/company/szaboscandic)



LEDGF/p75 Antibody

Rabbit Polyclonal

Antigen Affinity Purified

Protein ID NP_150091.2

Catalog No. A300-847A

GeneID 11168

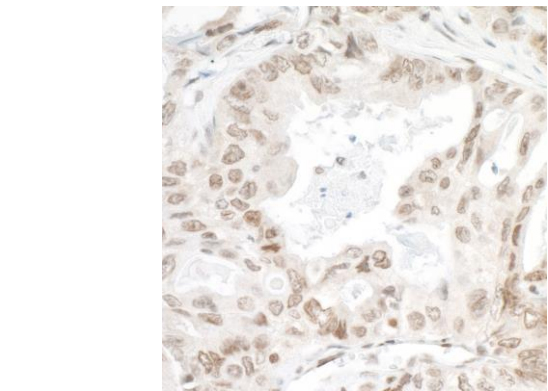
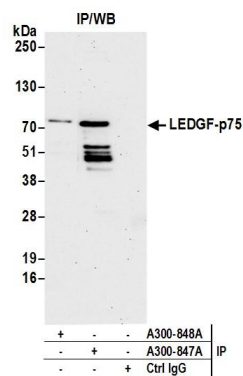
Lot No. A300-847A-3



APPLICATIONS	IP, IHC						
SPECIES REACTIVITY	Human, Mouse						
PRESUMED REACTIVITY	Based on 100% sequence identity, this antibody is predicted to react with Cat						
AMOUNT	100 µl						
CONCENTRATION	1000 µg/ml						
STORAGE/SHELF LIFE	2 – 8° C / 1 year from date of receipt						
PHYSICAL STATE	Liquid						
BUFFER	Tris-citrate/phosphate buffer, pH 7 to 8 containing 0.09% Sodium Azide						
ISOTYPE	IgG						
ORIGIN	USA						
PRODUCTION PROCEDURES	<p>Antibody was affinity purified using an epitope specific to LEDGF/p75 immobilized on solid support.</p> <p>The epitope recognized by A300-847A maps to a region between residue 225 and 275 of human Lens Epithelium Derived Growth Factor/Transcriptional Coactivator p75 using the numbering given in entry NP_150091.2 (GeneID 11168).</p> <p>Immunoglobulin concentration was determined by extinction coefficient: absorbance at 280 nm of 1.4 equals 1.0 mg of IgG.</p>						
APPLICATIONS	<p>Centrifuge tube to remove product from lid. Optimal working dilutions should be determined experimentally by the investigator. Prepare working dilution immediately before use.</p> <table><tr><td>Western Blot</td><td>Not recommended. Use rabbit anti-LEDGF antibody A300-848A.</td></tr><tr><td>Immunoprecipitation</td><td>2 – 5 µg/mg lysate</td></tr><tr><td>Immunohistochemistry</td><td>1:2,000 to 1:10,000. Epitope retrieval with Tris-EDTA pH9.0 is recommended for FFPE tissue sections.</td></tr></table>	Western Blot	Not recommended. Use rabbit anti-LEDGF antibody A300-848A.	Immunoprecipitation	2 – 5 µg/mg lysate	Immunohistochemistry	1:2,000 to 1:10,000. Epitope retrieval with Tris-EDTA pH9.0 is recommended for FFPE tissue sections.
Western Blot	Not recommended. Use rabbit anti-LEDGF antibody A300-848A.						
Immunoprecipitation	2 – 5 µg/mg lysate						
Immunohistochemistry	1:2,000 to 1:10,000. Epitope retrieval with Tris-EDTA pH9.0 is recommended for FFPE tissue sections.						
APPLICATION NOTES	Western blot of immunoprecipitates performed using Normal Pig Serum (Cat. No. S100-020), Goat anti-Rabbit Light Chain HRP Conjugate (Cat. No. A120-113P) and 4-20% SDS-PAGE (link to IP-western blot protocol in Additional Info section below).						
IHC HUMAN CONTROLS	Ovarian Carcinoma, Skin Squamous Cell Carcinoma						
IHC MOUSE CONTROLS	Renal Cell Carcinoma						
ADDITIONAL INFO	<p>https://www.bethyl.com/product/A300-847A</p> <p>Use the link above to view SDS, a current list of citations, and other product specific information. IP-western blot protocol: https://www.bethyl.com/content/protocol_IP_WB</p>						

This document certifies that this product has met all of the quality control standards defined by Bethyl Laboratories, Inc.
Eric McIntush, PhD | Chief Scientific Officer

Date: June 21, 2019



Detection of human LEDGF/p75 by western blot of immunoprecipitates. *Samples:* Whole cell lysate (1.0 mg per IP reaction; 20% of IP loaded) from HeLa cells prepared using NETN lysis buffer. *Antibodies:* Affinity purified rabbit anti-LEDGF/p75 antibody A300-847A (lot A300-847A-3) used for IP at 3 µg per reaction. LEDGF/p75 was also immunoprecipitated by rabbit anti-LEDGF/p75 antibody A300-848A. For blotting immunoprecipitated LEDGF-p75, A300-847A was used at 1 µg/ml. *Detection:* Chemiluminescence with an exposure time of 75 seconds.

Detection of human LEDGF/p75 by immunohistochemistry. *Sample:* FFPE section of human lung carcinoma. *Antibody:* Affinity purified rabbit anti-LEDGF/p75 antibody (A300-847A lot 3) used at 1:5000 (0.2 µg/ml). *Secondary:* HRP-conjugated goat anti-rabbit IgG (A120-501P).