



SZABO SCANDIC

Part of Europa Biosite

Produktinformation



Forschungsprodukte & Biochemikalien



Zellkultur & Verbrauchsmaterial



Diagnostik & molekulare Diagnostik



Laborgeräte & Service

Weitere Information auf den folgenden Seiten!
See the following pages for more information!



Lieferung & Zahlungsart

siehe unsere [Liefer- und Versandbedingungen](#)

Zuschläge

- Mindermengenzuschlag
- Trockeneiszuschlag
- Gefahrgutzuschlag
- Expressversand

SZABO-SCANDIC HandelsgmbH

Quellenstraße 110, A-1100 Wien

T. +43(0)1 489 3961-0

F. +43(0)1 489 3961-7

mail@szabo-scandic.com

www.szabo-scandic.com

[linkedin.com/company/szaboscandic](https://www.linkedin.com/company/szaboscandic) 

RBM9 Antibody

Rabbit Polyclonal

Antigen Affinity Purified Protein ID NP_055124.1

Catalog No. A300-864A-T GeneID 23543

Lot No. A300-864A-T-4

APPLICATIONS WB, IP, IHC

SPECIES REACTIVITY Human, Mouse, Rat

AMOUNT 10 µl

CONCENTRATION 1000 µg/ml

STORAGE/SHELF LIFE 2 – 8°C / 1 year from date of receipt

PHYSICAL STATE Liquid

BUFFER Tris-citrate/phosphate buffer, pH 7 to 8 containing 0.09% Sodium Azide

ISOTYPE IgG

ORIGIN USA

PRODUCTION PROCEDURES Antibody was affinity purified using an epitope specific to RBM9 immobilized on solid support.

The epitope recognized by A300-864A-T maps to a region between residue 1 and 50 of human RNA Binding Motif Protein 9 using the numbering given in entry NP_055124.1 (GeneID 23543).

APPLICATIONS Centrifuge tube to remove product from lid. Optimal working dilutions should be determined experimentally by the investigator. Prepare working dilution immediately before use.

Western Blot 1:2,000 – 1:10,000

Immunoprecipitation 2 – 10 µg/mg lysate

Immunohistochemistry 1:2,000 to 1:10,000. Epitope retrieval with citrate buffer pH6.0 is recommended for FFPE tissue sections.

ADDITIONAL INFO <https://www.bethyl.com/product/A300-864A-T>

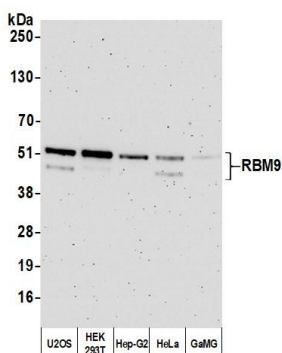
Use the link above to view SDS, a current list of citations, and other product specific information.

IP-western blot protocol: https://www.bethyl.com/content/protocol_IP_WB

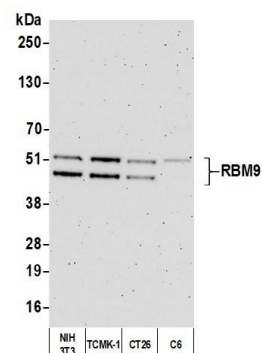
This document certifies that this product has met all of the quality control standards defined by Bethyl Laboratories, Inc.

Michael Spencer, PhD

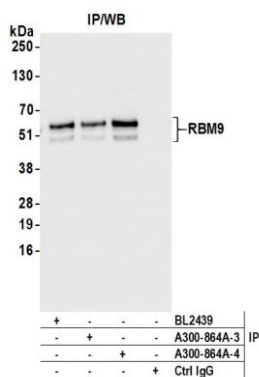
Date: June 6, 2022



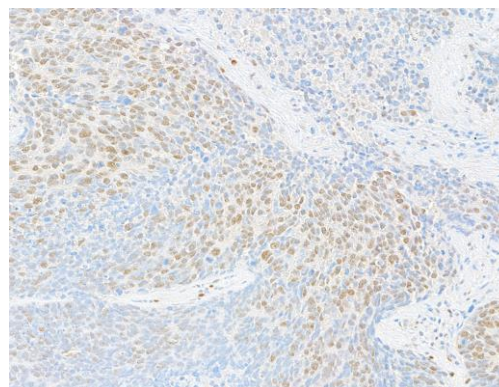
Detection of human RBM9 by western blot. *Samples:* Whole cell lysate (10 µg) from U2OS, HEK293T, Hep-G2, HeLa, and GaMG cells prepared using NETN lysis buffer. ***Antibody:*** Affinity purified rabbit anti-RBM9 antibody (A300-864A lot 4) used for WB at 0.1 µg/ml. ***Detection:*** Chemiluminescence with an exposure time of 3 minutes.



Detection of human RBM9 by western blot. *Samples:* Whole cell lysate (10 µg) from NIH 3T3, TCMK-1, CT26, and C6 cells prepared using NETN lysis buffer. ***Antibody:*** Affinity purified rabbit anti-RBM9 antibody A300-864A (lot A300-864A-4) used for WB at 0.1 µg/ml. ***Detection:*** Chemiluminescence with an exposure time of 3 minutes.



Detection of human RBM9 by western blot of immunoprecipitates. *Samples:* Whole cell lysate (1.0 mg per IP reaction; 20% of IP loaded) from HEK293T cells prepared using NETN lysis buffer. ***Antibodies:*** Affinity purified rabbit anti-RBM9 antibody (A300-864A lot 4) used for IP at 6 µg per reaction. RBM9 was also immunoprecipitated by a previous lot of this antibody (A300-864A lot 3) and a second antibody to a different epitope of RBM9 (BL2440). For blotting immunoprecipitated RBM9, A300-864A was used at 0.1 µg/ml. ***Detection:*** Chemiluminescence with an exposure time of 1 second.



Detection of human RBM9 by immunohistochemistry. *Sample:* FFPE section of human lung carcinoma. ***Antibody:*** Affinity purified rabbit anti-RBM9 (A300-864A Lot 4) used at a dilution of 1:5,000 (0.2 µg/ml). ***Detection:*** DAB