



SZABO SCANDIC

Part of Europa Biosite

Produktinformation



Forschungsprodukte & Biochemikalien



Zellkultur & Verbrauchsmaterial



Diagnostik & molekulare Diagnostik



Laborgeräte & Service

Weitere Information auf den folgenden Seiten!
See the following pages for more information!



Lieferung & Zahlungsart

siehe unsere [Liefer- und Versandbedingungen](#)

Zuschläge

- Mindermengenzuschlag
- Trockeneiszuschlag
- Gefahrgutzuschlag
- Expressversand

SZABO-SCANDIC HandelsgmbH

Quellenstraße 110, A-1100 Wien

T. +43(0)1 489 3961-0

F. +43(0)1 489 3961-7

mail@szabo-scandic.com

www.szabo-scandic.com

[linkedin.com/company/szaboscandic](https://www.linkedin.com/company/szaboscandic) 

RBM9 Antibody

Rabbit Polyclonal

Antigen Affinity Purified

Protein ID NP_055124.1

Catalog No. A300-864A

GeneID 23543

Lot No. A300-864A-4

APPLICATIONS WB, IP, IHC

SPECIES REACTIVITY Human, Mouse, Rat

AMOUNT 100 µl

CONCENTRATION 1000 µg/ml

STORAGE/SHELF LIFE 2 – 8° C / 1 year from date of receipt

PHYSICAL STATE Liquid

BUFFER Tris-citrate/phosphate buffer, pH 7 to 8 containing 0.09% Sodium Azide

ISOTYPE IgG

ORIGIN USA

PRODUCTION PROCEDURES Antibody was affinity purified using an epitope specific to RBM9 immobilized on solid support.

The epitope recognized by A300-864A maps to a region between residue 1 and 50 of human RNA Binding Motif Protein 9 using the numbering given in entry NP_055124.1 (GeneID 23543).

Immunoglobulin concentration was determined by extinction coefficient: absorbance at 280 nm of 1.4 equals 1.0 mg of IgG.

APPLICATIONS Centrifuge tube to remove product from lid. Optimal working dilutions should be determined experimentally by the investigator. Prepare working dilution immediately before use.

Western Blot 1:2,000 – 1:10,000

Immunoprecipitation 2 – 10 µg/mg lysate

Immunohistochemistry 1:2,000 to 1:10,000. Epitope retrieval with citrate buffer pH6.0 is recommended for FFPE tissue sections.

IHC HUMAN CONTROLS Breast Carcinoma, Colon Carcinoma, Ovarian Carcinoma, Prostate Carcinoma, Stomach Adenocarcinoma

IHC MOUSE CONTROLS Renal Cell Carcinoma, Teratoma

ADDITIONAL INFO <https://www.bethyl.com/product/A300-864A>

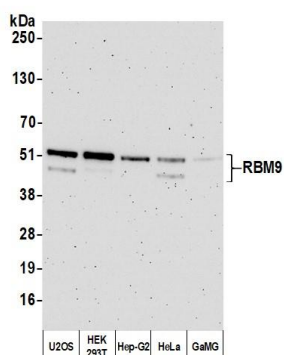
Use the link above to view SDS, a current list of citations, and other product specific information.

IP-western blot protocol: https://www.bethyl.com/content/protocol_IP_WB

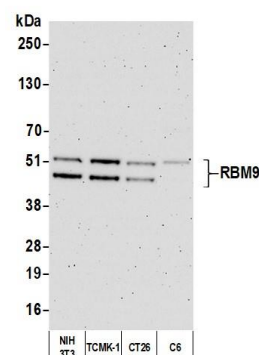
This document certifies that this product has met all of the quality control standards defined by Bethyl Laboratories, Inc.

Michael Spencer, PhD

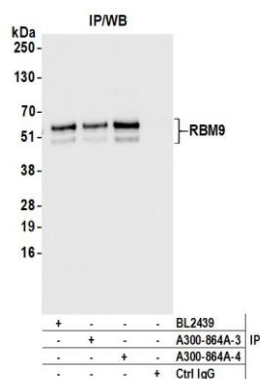
Date: September 9, 2021



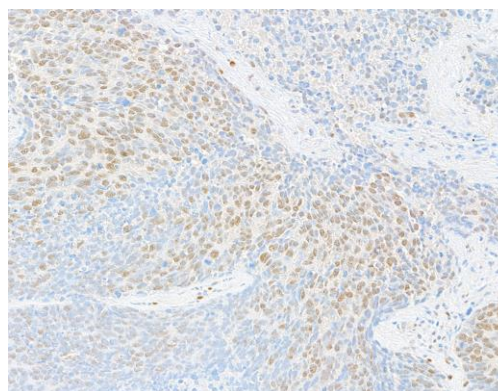
Detection of human RBM9 by western blot. *Samples:* Whole cell lysate (10 µg) from U2OS, HEK293T, Hep-G2, HeLa, and GaMG cells prepared using NETN lysis buffer. ***Antibody:*** Affinity purified rabbit anti-RBM9 antibody (A300-864A lot 4) used for WB at 0.1 µg/ml. ***Detection:*** Chemiluminescence with an exposure time of 3 minutes.



Detection of human RBM9 by western blot. *Samples:* Whole cell lysate (10 µg) from NIH 3T3, TCMK-1, CT26, and C6 cells prepared using NETN lysis buffer. ***Antibody:*** Affinity purified rabbit anti-RBM9 antibody A300-864A (lot A300-864A-4) used for WB at 0.1 µg/ml. ***Detection:*** Chemiluminescence with an exposure time of 3 minutes.



Detection of human RBM9 by western blot of immunoprecipitates. *Samples:* Whole cell lysate (1.0 mg per IP reaction; 20% of IP loaded) from HEK293T cells prepared using NETN lysis buffer. ***Antibodies:*** Affinity purified rabbit anti-RBM9 antibody (A300-864A lot 4) used for IP at 6 µg per reaction. RBM9 was also immunoprecipitated by a previous lot of this antibody (A300-864A lot 3) and a second antibody to a different epitope of RBM9 (BL2440). For blotting immunoprecipitated RBM9, A300-864A was used at 0.1 µg/ml. ***Detection:*** Chemiluminescence with an exposure



Detection of human RBM9 by immunohistochemistry. *Sample:* FFPE section of human lung carcinoma. ***Antibody:*** Affinity purified rabbit anti-RBM9 (A300-864A Lot 4) used at a dilution of 1:5,000 (0.2µg/ml). ***Detection:*** DAB