



# SZABO SCANDIC

Part of Europa Biosite

## Produktinformation



Forschungsprodukte & Biochemikalien



Zellkultur & Verbrauchsmaterial



Diagnostik & molekulare Diagnostik



Laborgeräte & Service

Weitere Information auf den folgenden Seiten!  
See the following pages for more information!



### Lieferung & Zahlungsart

siehe unsere [Liefer- und Versandbedingungen](#)

### Zuschläge

- Mindermengenzuschlag
- Trockeneiszuschlag
- Gefahrgutzuschlag
- Expressversand

### SZABO-SCANDIC Handels GmbH

Quellenstraße 110, A-1100 Wien

T. +43(0)1 489 3961-0

F. +43(0)1 489 3961-7

[mail@szabo-scandic.com](mailto:mail@szabo-scandic.com)

[www.szabo-scandic.com](http://www.szabo-scandic.com)

[linkedin.com/company/szaboscandic](https://www.linkedin.com/company/szaboscandic) 

# RCC2 Antibody

Rabbit Polyclonal

Antigen Affinity Purified

Protein ID NP\_061185.1

Catalog No. A300-873A-T

GeneID 55920

Lot No. A300-873A-T-1

<b>APPLICATIONS</b>	WB, IHC
<b>SPECIES REACTIVITY</b>	Human, Mouse
<b>AMOUNT</b>	10 µl
<b>CONCENTRATION</b>	200 µg/ml
<b>STORAGE/SHELF LIFE</b>	2 – 8°C / 1 year from date of receipt
<b>PHYSICAL STATE</b>	Liquid
<b>BUFFER</b>	Tris-buffered Saline containing 0.1% BSA and 0.09% Sodium Azide
<b>ISOTYPE</b>	IgG
<b>ORIGIN</b>	USA
<b>PRODUCTION PROCEDURES</b>	Antibody was affinity purified using an epitope specific to RCC2 immobilized on solid support.

The epitope recognized by A300-873A-T maps to a region between residue 475 and the C-terminus (residue 522) of human Regulator of Chromosome Condensation 2 using the numbering given in entry NP\_061185.1 (GeneID 55920).

**APPLICATIONS** Centrifuge tube to remove product from lid. Optimal working dilutions should be determined experimentally by the investigator. Prepare working dilution immediately before use.

Western Blot 1:2,000 – 1:10,000

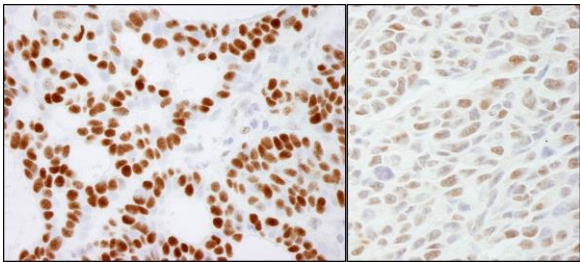
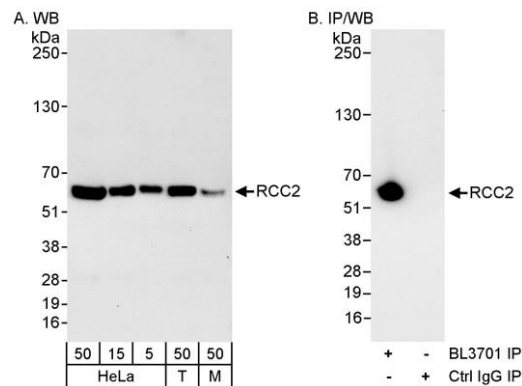
Immunoprecipitation Not recommended. Use rabbit anti-RCC2 antibody A300-872A.

Immunohistochemistry 1:200 – 1:1,000. Epitope retrieval with citrate buffer pH 6.0 is recommended for FFPE tissue sections.

**ADDITIONAL INFO** <https://www.bethyl.com/product/A300-873A-T>

Use the link above to view SDS, a current list of citations, and other product specific information.

This document certifies that this product has met all of the quality control standards defined by Bethyl Laboratories, Inc.  
Michael Spencer, PhD Date: June 6, 2022



**Detection of human and mouse RCC2 by western blot (h&m) and immunoprecipitation (h).** *Samples:* Whole cell lysate from HeLa (5, 15 and 50 µg for WB; 1 mg for IP, 20% of IP loaded), HEK293T (T; 50 µg) and mouse NIH 3T3 (M; 50 µg) cells. *Antibodies:* Affinity purified rabbit anti-RCC2 antibody BL3704 (Cat. No. A300-873A) used for WB at 0.04 µg/ml (A) and 0.1 µg/ml (B). RCC2 was immunoprecipitated by rabbit anti-RCC2 antibody BL3701 (Cat. No. A300-872A), which recognizes an upstream epitope. *Detection:* Chemiluminescence with exposure times of 1 second (A and B).

**Detection of human and mouse RCC2 by immunohistochemistry.** *Sample:* FFPE sections of human skin basal cell carcinoma (left) and mouse CT26 colon carcinoma (right). *Antibody:* Affinity purified rabbit anti-RCC2 (Cat. No. A300-873A Lot1) used at a dilution of 1:1,000 (0.2µg/ml) and 1:200 (1µg/ml). *Detection:* DAB