



SZABO SCANDIC

Part of Europa Biosite

Produktinformation



Forschungsprodukte & Biochemikalien



Zellkultur & Verbrauchsmaterial



Diagnostik & molekulare Diagnostik



Laborgeräte & Service

Weitere Information auf den folgenden Seiten!
See the following pages for more information!



Lieferung & Zahlungsart

siehe unsere [Liefer- und Versandbedingungen](#)

Zuschläge

- Mindermengenzuschlag
- Trockeneiszuschlag
- Gefahrgutzuschlag
- Expressversand

SZABO-SCANDIC HandelsgmbH

Quellenstraße 110, A-1100 Wien

T. +43(0)1 489 3961-0

F. +43(0)1 489 3961-7

mail@szabo-scandic.com

www.szabo-scandic.com

[linkedin.com/company/szaboscandic](https://www.linkedin.com/company/szaboscandic) 

CBX8 Antibody

Rabbit Polyclonal

Antigen Affinity Purified Protein ID NP_065700.1

Catalog No. A300-882A-T GeneID 57332

Lot No. A300-882A-T-2

APPLICATIONS	WB, IP, ChIP-Seq
SPECIES REACTIVITY	Human
PRESUMED REACTIVITY	Based on 100% sequence identity, this antibody is predicted to react with Mouse
AMOUNT	10 µl
CONCENTRATION	1000 µg/ml
STORAGE/SHELF LIFE	2 – 8°C / 1 year from date of receipt
PHYSICAL STATE	Liquid
BUFFER	Tris-citrate/phosphate buffer, pH 7 to 8 containing 0.09% Sodium Azide
ISOTYPE	IgG
ORIGIN	USA
PRODUCTION PROCEDURES	Antibody was affinity purified using an epitope specific to CBX8 immobilized on solid support.

The epitope recognized by A300-882A-T maps to a region between residue 350 and the C-terminus (residue 389) of human Chromobox homolog 8 using the numbering given in entry NP_065700.1 (GeneID 57332).

APPLICATIONS Centrifuge tube to remove product from lid. Optimal working dilutions should be determined experimentally by the investigator. Prepare working dilution immediately before use.

Western Blot 1:2,000 – 1:10,000

Immunoprecipitation 2 – 10 µg/mg lysate

ChIP-Seq 1 – 2 µg

ADDITIONAL INFO <https://www.bethyl.com/product/A300-882A-T>

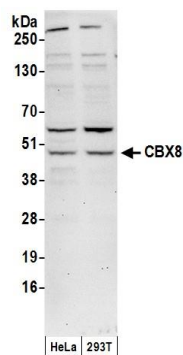
Use the link above to view SDS, a current list of citations, and other product specific information.

IP-western blot protocol: https://www.bethyl.com/content/protocol_IP_WB

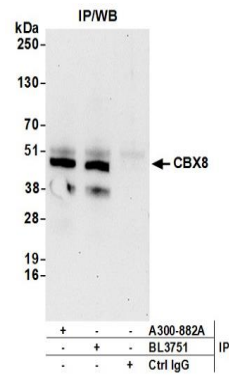
This document certifies that this product has met all of the quality control standards defined by Bethyl Laboratories, Inc.

Michael Spencer, PhD

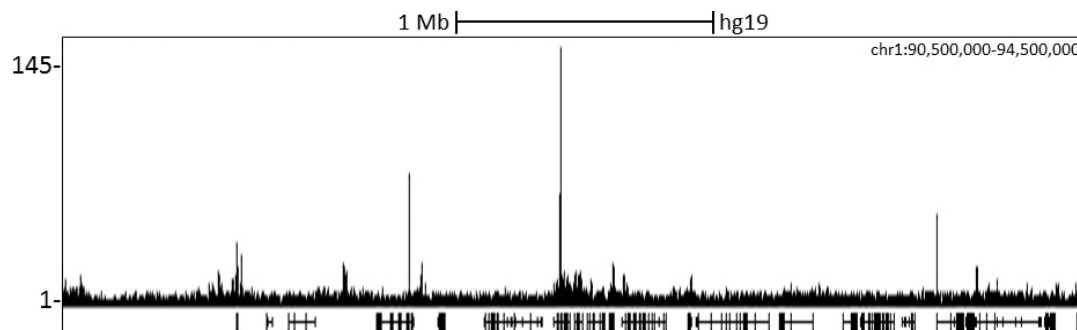
Date: June 6, 2022



Detection of human CBX8 by western blot. *Samples:* Whole cell lysate (50 µg) from HeLa and HEK293T cells prepared using NETN lysis buffer. *Antibody:* Affinity purified rabbit anti-CBX8 antibody A300-882A (lot A300-882A-2) used for WB at 0.1 µg/ml. *Detection:* Chemiluminescence with an exposure time of 30 seconds.



Detection of human CBX8 by western blot of immunoprecipitates. *Samples:* Whole cell lysate (0.5 or 1.0 mg per IP reaction; 20% of IP loaded) from HeLa cells prepared using NETN lysis buffer. *Antibodies:* Affinity purified rabbit anti-CBX8 antibody A300-882A (lot A300-882A-2) used for IP at 6 µg per reaction. CBX8 was also immunoprecipitated by rabbit anti-CBX8 antibody BL3751. For blotting immunoprecipitated CBX8, A300-882A was used at 0.4 µg/ml. *Detection:* Chemiluminescence with an exposure time of 30 seconds.



Localization of CBX8 Binding Sites by ChIP-sequencing. Chromatin from K562 cells was immunoprecipitated with anti-CBX8 antibody A300-882A and analyzed by DNA sequencing. The figure illustrates the peak distribution of CBX8 binding within a 4 Mb region of chromosome 1 as detected using anti-CBX8 antibody A300-882A. ChIP-seq validation performed by Diogenode, Denville, NJ.