



# SZABO SCANDIC

Part of Europa Biosite

## Produktinformation



Forschungsprodukte & Biochemikalien



Zellkultur & Verbrauchsmaterial



Diagnostik & molekulare Diagnostik



Laborgeräte & Service

Weitere Information auf den folgenden Seiten!  
See the following pages for more information!



### Lieferung & Zahlungsart

siehe unsere [Liefer- und Versandbedingungen](#)

### Zuschläge

- Mindermengenzuschlag
- Trockeneiszuschlag
- Gefahrgutzuschlag
- Expressversand

### SZABO-SCANDIC HandelsgmbH

Quellenstraße 110, A-1100 Wien

T. +43(0)1 489 3961-0

F. +43(0)1 489 3961-7

[mail@szabo-scandic.com](mailto:mail@szabo-scandic.com)

[www.szabo-scandic.com](http://www.szabo-scandic.com)

[linkedin.com/company/szaboscandic](https://www.linkedin.com/company/szaboscandic) 

# COP1 /RFWD2 Antibody

Rabbit Polyclonal

Antigen Affinity Purified

RefSeq ID NP\_071902.2

Catalog No. A300-894A-T

Uniprot ID Q8NHY2

Lot No. 4

GenelD 64326

<b>APPLICATIONS</b>	WB, IP
<b>SPECIES REACTIVITY</b>	Human, Mouse
<b>AMOUNT</b>	10 µl
<b>CONCENTRATION</b>	200 µg/ml
<b>STORAGE/SHELF LIFE</b>	2 – 8°C / 1 year from date of receipt
<b>PHYSICAL STATE</b>	Liquid
<b>BUFFER</b>	Tris-buffered Saline containing 0.1% BSA and 0.09% Sodium Azide
<b>ISOTYPE</b>	IgG
<b>ORIGIN</b>	USA
<b>PRODUCTION PROCEDURES</b>	Antibody was affinity purified using an epitope specific to COP1 /RFWD2 immobilized on solid support.

The epitope recognized by A300-894A-T maps to a region between residue 1 and 50 of human Constitutive Photomorphogenic Protein-1 /Ring Finger and WD Repeat Domain 2 using the numbering given in entry NP\_071902.2 (GenelD 64326).

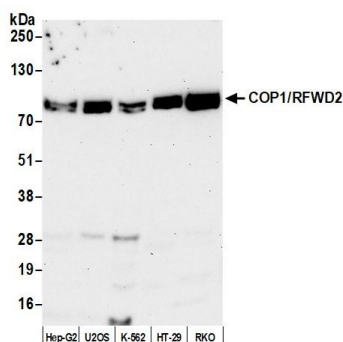
**APPLICATIONS** Centrifuge tube to remove product from lid. Optimal working dilutions should be determined experimentally by the investigator. Prepare working dilution immediately before use.

Western Blot	1:2,000 – 1:10,000
Immunoprecipitation	2 – 10 µg/mg lysate

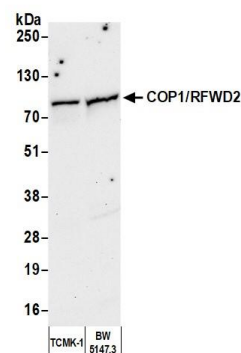
**ADDITIONAL INFO** <https://www.fortislife.com/p/A300-894A-T>

Use the link above to view SDS, a current list of citations, and other product specific information.

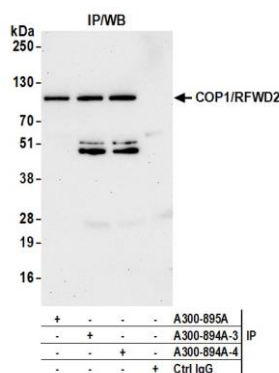
This document certifies that this product has met all of the quality control standards defined by Bethyl Laboratories, Inc.  
Michael Spencer, PhD Date: August 30, 2023


**Detection of human COP1/RFWD2 by western blot.**

*Samples:* Whole cell lysate (50 µg) from Hep-G2, U2OS, K-562, HT-29, and RKO cells prepared using NETN lysis buffer. *Antibody:* Affinity purified rabbit anti-COP1/RFWD2 antibody (A300-894A lot 4) used for WB at 0.2 µg/ml. *Detection:* Chemiluminescence with an exposure time of 3 minutes.


**Detection of mouse COP1/RFWD2 by western blot.**

*Samples:* Whole cell lysate (50 µg) from TCMK-1 and BW5147.3 cells prepared using NETN lysis buffer. *Antibody:* Affinity purified rabbit anti-COP1/RFWD2 antibody (A300-894A lot 4) used for WB at 0.2 µg/ml. *Detection:* Chemiluminescence with an exposure time of 3 minutes.


**Detection of human COP1/RFWD2 by western blot of immunoprecipitates.**

*Samples:* Whole cell lysate (1.0 mg per IP reaction; 20% of IP loaded) from Hep-G2 cells prepared using NETN lysis buffer. *Antibodies:* Affinity purified rabbit anti-COP1/RFWD2 antibody (A300-894A lot 4) used for IP at 6 µg per reaction. COP1/RFWD2 was also immunoprecipitated by a previous lot of this antibody (A300-894A lot 3) and a second antibody against a different epitope of COP1/RFWD2 (A300-895A). For blotting immunoprecipitated COP1/RFWD2, A300-894A was used at 0.1 µg/ml. *Detection:* Chemiluminescence with an exposure time of 3 minutes.