



SZABO SCANDIC

Part of Europa Biosite

Produktinformation



Forschungsprodukte & Biochemikalien



Zellkultur & Verbrauchsmaterial



Diagnostik & molekulare Diagnostik



Laborgeräte & Service

Weitere Information auf den folgenden Seiten!
See the following pages for more information!



Lieferung & Zahlungsart

siehe unsere [Liefer- und Versandbedingungen](#)

Zuschläge

- Mindermengenzuschlag
- Trockeneiszuschlag
- Gefahrgutzuschlag
- Expressversand

SZABO-SCANDIC HandelsgmbH

Quellenstraße 110, A-1100 Wien

T. +43(0)1 489 3961-0

F. +43(0)1 489 3961-7

mail@szabo-scandic.com

www.szabo-scandic.com

[linkedin.com/company/szaboscandic](https://www.linkedin.com/company/szaboscandic) 

COP1 /RFWD2 Antibody

Rabbit Polyclonal

Antigen Affinity Purified	Protein ID	NP_071902.2
Catalog No. A300-895A-T	GeneID	64326
Lot No. A300-895A-T-2		

APPLICATIONS	IP
SPECIES REACTIVITY	Human
AMOUNT	10 µl
CONCENTRATION	1000 µg/ml
STORAGE/SHELF LIFE	2 – 8°C / 1 year from date of receipt
PHYSICAL STATE	Liquid
BUFFER	Tris-citrate/phosphate buffer, pH 7 to 8 containing 0.09% Sodium Azide
ISOTYPE	IgG
ORIGIN	USA
PRODUCTION PROCEDURES	Antibody was affinity purified using an epitope specific to COP1 /RFWD2 immobilized on solid support.

The epitope recognized by A300-895A-T maps to a region between residue 100 and 150 of human Constitutive Photomorphogenic Protein-1 /Ring Finger and WD Repeat Domain 2 using the numbering given in entry NP_071902.2 (GeneID 64326).

Immunoglobulin concentration was determined by extinction coefficient: absorbance at 280 nm of 1.4 equals 1.0 mg of IgG.

APPLICATIONS Centrifuge tube to remove product from lid. Optimal working dilutions should be determined experimentally by the investigator. Prepare working dilution immediately before use.

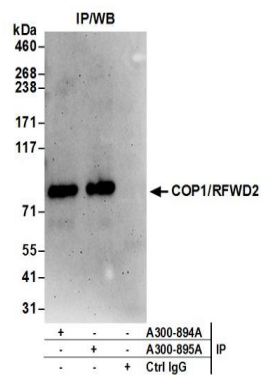
Western Blot	Not recommended. Use rabbit anti-COP1 /RFWD2 antibody A300-894A.
--------------	--

Immunoprecipitation	2 – 10 µg/mg lysate
---------------------	---------------------

ADDITIONAL INFO <https://www.bethyl.com/product/A300-895A-T>

Use the link above to view SDS, a current list of citations, and other product specific information.
IP-western blot protocol: https://www.bethyl.com/content/protocol_IP_WB

This document certifies that this product has met all of the quality control standards defined by Bethyl Laboratories, Inc.
Michael Spencer, PhD Date: June 6, 2022



Detection of human COP1/RFWD2 by western blot of immunoprecipitates. *Samples:* Whole cell lysate (0.5 or 1.0 mg per IP reaction; 20% of IP loaded) from HeLa cells prepared using NETN lysis buffer. *Antibodies:* Affinity purified rabbit anti-COP1/RFWD2 antibody A300-895A (lot A300-895A-2) used for IP at 6 µg per reaction. COP1/RFWD2 was also immunoprecipitated by rabbit anti-COP1/RFWD2 antibody A300-894A. For blotting immunoprecipitated COP1/RFWD2, A300-894A was used at 1 µg/ml. *Detection:* Chemiluminescence with an exposure time of 3 minutes.