



# SZABO SCANDIC

Part of Europa Biosite

## Produktinformation



Forschungsprodukte & Biochemikalien



Zellkultur & Verbrauchsmaterial



Diagnostik & molekulare Diagnostik



Laborgeräte & Service

Weitere Information auf den folgenden Seiten!  
See the following pages for more information!



### Lieferung & Zahlungsart

siehe unsere [Liefer- und Versandbedingungen](#)

### Zuschläge

- Mindermengenzuschlag
- Trockeneiszuschlag
- Gefahrgutzuschlag
- Expressversand

### SZABO-SCANDIC HandelsgmbH

Quellenstraße 110, A-1100 Wien

T. +43(0)1 489 3961-0

F. +43(0)1 489 3961-7

[mail@szabo-scandic.com](mailto:mail@szabo-scandic.com)

[www.szabo-scandic.com](http://www.szabo-scandic.com)

[linkedin.com/company/szaboscandic](https://www.linkedin.com/company/szaboscandic) 

# USP10 Antibody

Rabbit Polyclonal

Antigen Affinity Purified	RefSeq ID	NP_005144.1
Catalog No. A300-900A-T	Uniprot ID	Q14694
Lot No. A300-900A-T-3	GeneID	9100

<b>APPLICATIONS</b>	WB, IP, IHC
<b>SPECIES REACTIVITY</b>	Human, Mouse
<b>AMOUNT</b>	10 µl
<b>CONCENTRATION</b>	200 µg/ml
<b>STORAGE/SHELF LIFE</b>	2 – 8°C / 1 year from date of receipt
<b>PHYSICAL STATE</b>	Liquid
<b>BUFFER</b>	Tris-buffered Saline containing 0.1% BSA and 0.09% Sodium Azide
<b>ISOTYPE</b>	IgG
<b>ORIGIN</b>	USA
<b>PRODUCTION PROCEDURES</b>	Antibody was affinity purified using an epitope specific to USP10 immobilized on solid support.

The epitope recognized by A300-900A-T maps to a region between residue 50 and 100 of human Ubiquitin Specific Peptidase 10 using the numbering given in entry NP\_005144.1 (GeneID 9100).

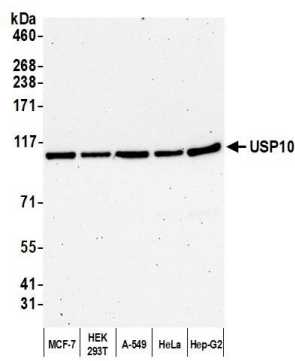
**APPLICATIONS** Centrifuge tube to remove product from lid. Optimal working dilutions should be determined experimentally by the investigator. Prepare working dilution immediately before use.

Western Blot	1:2,000 – 1:10,000
Immunoprecipitation	2 – 10 µg/mg lysate
Immunohistochemistry	1:20 to 1:100. Epitope retrieval with citrate buffer pH6.0 is recommended for FFPE tissue sections.

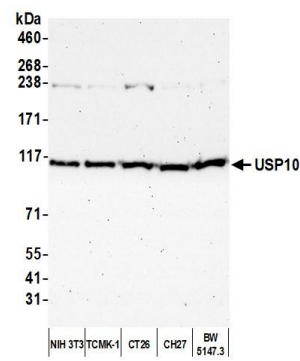
**IHC HUMAN CONTROLS** Breast Carcinoma, Colon Carcinoma, Ovarian Carcinoma, Testicular Seminoma

**ADDITIONAL INFO** <https://www.fortislifesciences.com/p/A300-900A-T>  
Use the link above to view SDS, a current list of citations, and other product specific information.

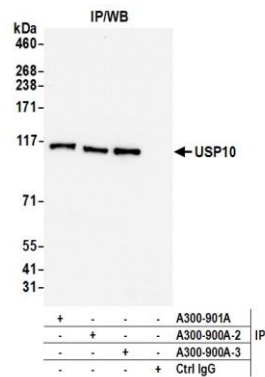
This document certifies that this product has met all of the quality control standards defined by Bethyl Laboratories, Inc.  
Michael Spencer, PhD Date: December 12, 2022



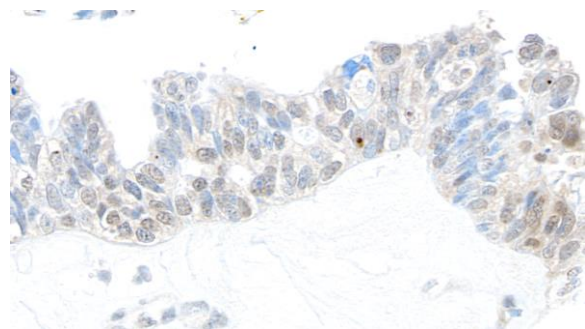
**Detection of human USP10 by western blot.** *Samples:* Whole cell lysate (10 µg) from MCF-7, HEK293T, A-549, HeLa, and Hep-G2 cells prepared using NETN lysis buffer. *Antibody:* Affinity purified rabbit anti-USP10 antibody (A300-900A lot 3) used for WB at 0.04 µg/ml. *Detection:* Chemiluminescence with an exposure time of 75 seconds.



**Detection of mouse USP10 by western blot.** *Samples:* Nuclear extract (50 µg) from NIH 3T3, TCMK-1, CT26, CH27, and BW5147.3 cells prepared using NETN lysis buffer. *Antibody:* Affinity purified rabbit anti-USP10 antibody (A300-900A lot 3) used for WB at 0.04 µg/ml. *Detection:* Chemiluminescence with an exposure time of 75 seconds.



**Detection of human USP10 by western blot of immunoprecipitates.** *Samples:* Whole cell lysate (200 µg per IP reaction; 5% of IP loaded) from HEK293T cells prepared using NETN lysis buffer. *Antibodies:* Affinity purified rabbit anti-USP10 antibody (A300-900A lot 3) used for IP at 6 µg per reaction. USP10 was also immunoprecipitated by a previous lot of this antibody (A300-900A lot 2) and a second antibody against a different epitope of USP10 (A300-901A). For blotting immunoprecipitated USP10, A300-900A was used at 0.04 µg/ml. *Detection:* Chemiluminescence with an exposure time of 3 seconds.



**Detection of human USP10 by immunohistochemistry.** *Sample:* FFPE section of human ovarian carcinoma. *Antibody:* Affinity purified rabbit anti-USP10 (A300-900A Lot 3) used at a dilution of 1:200 (1µg/ml). *Detection:* DAB