



SZABO SCANDIC

Part of Europa Biosite

Produktinformation



Forschungsprodukte & Biochemikalien



Zellkultur & Verbrauchsmaterial



Diagnostik & molekulare Diagnostik



Laborgeräte & Service

Weitere Information auf den folgenden Seiten!
See the following pages for more information!



Lieferung & Zahlungsart

siehe unsere [Liefer- und Versandbedingungen](#)

Zuschläge

- Mindermengenzuschlag
- Trockeneiszuschlag
- Gefahrgutzuschlag
- Expressversand

SZABO-SCANDIC Handels GmbH

Quellenstraße 110, A-1100 Wien

T. +43(0)1 489 3961-0

F. +43(0)1 489 3961-7

mail@szabo-scandic.com

www.szabo-scandic.com

[linkedin.com/company/szaboscandic](https://www.linkedin.com/company/szaboscandic) 

PPP1CA Antibody

Rabbit Polyclonal

Antigen Affinity Purified	Protein ID	NP_002699.1
Catalog No. A300-904A-T	GeneID	5499
Lot No. A300-904A-T-3		

APPLICATIONS	WB, IHC
SPECIES REACTIVITY	Human, Mouse
PRESUMED REACTIVITY	Based on 100% sequence identity, this antibody is predicted to react with Rat, Bovine, Dog and Rabbit
AMOUNT	10 µl
CONCENTRATION	1000 µg/ml
STORAGE/SHELF LIFE	2 – 8°C / 1 year from date of receipt
PHYSICAL STATE	Liquid
BUFFER	Tris-citrate/phosphate buffer, pH 7 to 8 containing 0.09% Sodium Azide
ISOTYPE	IgG
ORIGIN	USA
PRODUCTION PROCEDURES	Antibody was affinity purified using an epitope specific to PPP1CA immobilized on solid support.

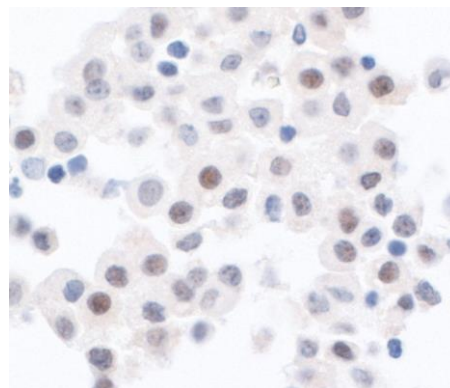
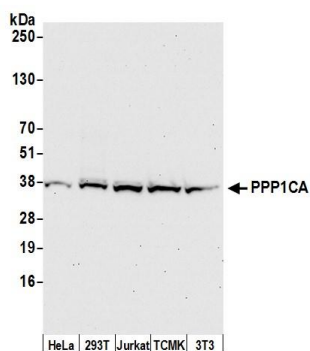
The epitope recognized by A300-904A-T maps to a region between residue 280 and the C-terminus (residue 330) of human Protein Phosphatase 1, Catalytic Subunit, Alpha Isoform using the numbering given in entry NP_002699.1 (GeneID 5499).

APPLICATIONS Centrifuge tube to remove product from lid. Optimal working dilutions should be determined experimentally by the investigator. Prepare working dilution immediately before use.

Western Blot	1:2,000 – 1:10,000
Immunoprecipitation	Not recommended. Efficiency at IP is very low.
Immunohistochemistry	1:500 to 1:2,000. Epitope retrieval with Tris-EDTA pH9.0 is recommended for FFPE tissue sections.

ADDITIONAL INFO <https://www.bethyl.com/product/A300-904A-T>
Use the link above to view SDS, a current list of citations, and other product specific information.

This document certifies that this product has met all of the quality control standards defined by Bethyl Laboratories, Inc.
Michael Spencer, PhD Date: June 6, 2022

**Detection of human and mouse PPP1CA by western blot.**

Samples: Whole cell lysate (50 µg) from HeLa, HEK293T, Jurkat, mouse TCMK-1, and mouse NIH 3T3 cells prepared using NETN lysis buffer. **Antibody:** Affinity purified rabbit anti-PPP1CA antibody A300-904A (lot A300-904A-3) used for WB at 0.1 µg/ml. **Detection:** Chemiluminescence with an exposure time of 30 seconds.

Detection of human PPP1CA by immunohistochemistry.

Sample: FFPE section of human lung cancer. **Antibody:** Affinity purified rabbit anti-PPP1CA (Cat. No. A300-904A Lot 3) used at a dilution of 1:1,000 (1 µg/ml). **Detection:** DAB