



SZABO SCANDIC

Part of Europa Biosite

Produktinformation



Forschungsprodukte & Biochemikalien



Zellkultur & Verbrauchsmaterial



Diagnostik & molekulare Diagnostik



Laborgeräte & Service

Weitere Information auf den folgenden Seiten!
See the following pages for more information!



Lieferung & Zahlungsart

siehe unsere [Liefer- und Versandbedingungen](#)

Zuschläge

- Mindermengenzuschlag
- Trockeneiszuschlag
- Gefahrgutzuschlag
- Expressversand

SZABO-SCANDIC HandelsgmbH

Quellenstraße 110, A-1100 Wien

T. +43(0)1 489 3961-0

F. +43(0)1 489 3961-7

mail@szabo-scandic.com

www.szabo-scandic.com

[linkedin.com/company/szaboscandic](https://www.linkedin.com/company/szaboscandic) 

PPP3CA Antibody

Rabbit Polyclonal

Antigen Affinity Purified	Protein ID	NP_000935.1
Catalog No. A300-908A-T	GeneID	5530
Lot No. A300-908A-T-3		

APPLICATIONS	WB, IP, IHC
SPECIES REACTIVITY	Human, Mouse
PRESUMED REACTIVITY	Based on 100% sequence identity, this antibody is predicted to react with Rat and Bovine
AMOUNT	10 µl
CONCENTRATION	1000 µg/ml
STORAGE/SHELF LIFE	2 – 8°C / 1 year from date of receipt
PHYSICAL STATE	Liquid
BUFFER	Tris-citrate/phosphate buffer, pH 7 to 8 containing 0.09% Sodium Azide
ISOTYPE	IgG
ORIGIN	USA
PRODUCTION PROCEDURES	Antibody was affinity purified using an epitope specific to PPP3CA immobilized on solid support.

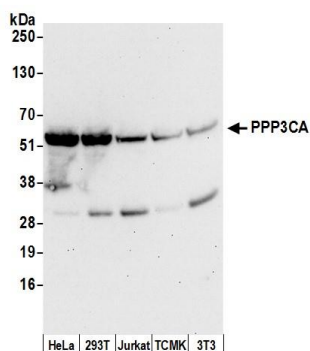
The epitope recognized by A300-908A-T maps to a region between residue 470 and the C-terminus (residue 521) of human Protein Phosphatase 3, Catalytic Subunit, Alpha isoform using the numbering given in entry NP_000935.1 (GeneID 5530).

APPLICATIONS Centrifuge tube to remove product from lid. Optimal working dilutions should be determined experimentally by the investigator. Prepare working dilution immediately before use.

Western Blot	1:2,000 – 1:10,000
Immunoprecipitation	2 – 10 µg/mg lysate
Immunohistochemistry	1:1,000 – 1:5,000. Epitope retrieval with Tris-EDTA pH 9.0 is recommended for FFPE tissue sections.

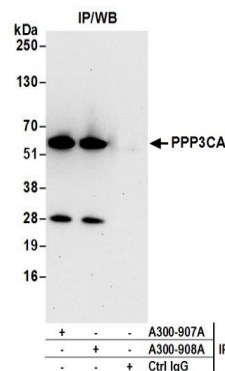
ADDITIONAL INFO <https://www.bethyl.com/product/A300-908A-T>
Use the link above to view SDS, a current list of citations, and other product specific information.
IP-western blot protocol: https://www.bethyl.com/content/protocol_IP_WB

This document certifies that this product has met all of the quality control standards defined by Bethyl Laboratories, Inc.
Michael Spencer, PhD Date: June 6, 2022



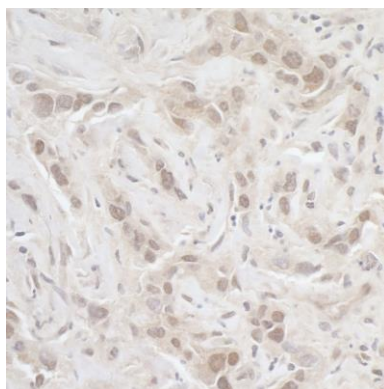
Detection of human and mouse PPP3CA by western blot.

Samples: Whole cell lysate (50 µg) from HeLa, HEK293T, Jurkat, mouse TCMK-1, and mouse NIH 3T3 cells prepared using NETN lysis buffer. **Antibody:** Affinity purified rabbit anti-PPP3CA antibody A300-908A (lot A300-908A-3) used for WB at 0.1 µg/ml. **Detection:** Chemiluminescence with an exposure time of 30 seconds.



Detection of human PPP3CA by western blot of immunoprecipitates.

Samples: Whole cell lysate (1.0 mg per IP reaction; 20% of IP loaded) from HeLa cells prepared using NETN lysis buffer. **Antibodies:** Affinity purified rabbit anti-PPP3CA antibody A300-908A (lot A300-908A-3) used for IP at 3 µg per reaction. PPP3CA was also immunoprecipitated by rabbit anti-PPP3CA antibody A300-907A. For blotting immunoprecipitated PPP3CA, A300-908A was used at 1 µg/ml. **Detection:** Chemiluminescence with an exposure time of 30 seconds.



Detection of human PPP3CA by immunohistochemistry.

Sample: FFPE section of human breast carcinoma. **Antibody:** Affinity purified rabbit anti-PPP3CA (Cat. No. A300-908A Lot3) used at a dilution of 1:1,000 (1 µg/ml). **Detection:** DAB