



SZABO SCANDIC

Part of Europa Biosite

Produktinformation



Forschungsprodukte & Biochemikalien



Zellkultur & Verbrauchsmaterial



Diagnostik & molekulare Diagnostik



Laborgeräte & Service

Weitere Information auf den folgenden Seiten!
See the following pages for more information!



Lieferung & Zahlungsart

siehe unsere [Liefer- und Versandbedingungen](#)

Zuschläge

- Mindermengenzuschlag
- Trockeneiszuschlag
- Gefahrgutzuschlag
- Expressversand

SZABO-SCANDIC HandelsgmbH

Quellenstraße 110, A-1100 Wien

T. +43(0)1 489 3961-0

F. +43(0)1 489 3961-7

mail@szabo-scandic.com

www.szabo-scandic.com

[linkedin.com/company/szaboscandic](https://www.linkedin.com/company/szaboscandic) 

Sin1 Antibody

Rabbit Polyclonal

Antigen Affinity Purified

Protein ID NP_001006618.1

Catalog No. A300-910A

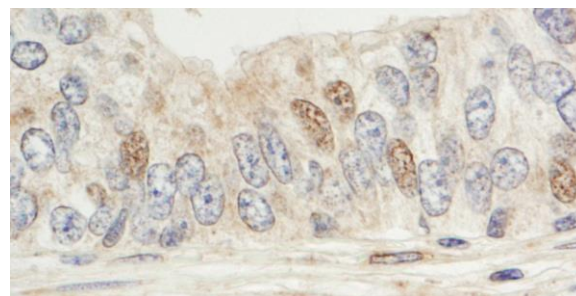
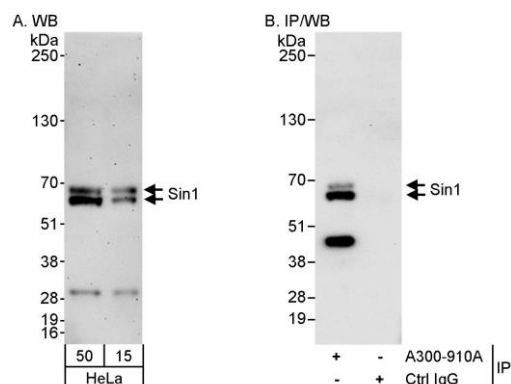
GeneID 79109

Lot No. A300-910A-1



| | | | | | | | |
|------------------------------|--|--------------|--------------------|---------------------|--------------------|----------------------|--|
| APPLICATIONS | WB, IP, IHC | | | | | | |
| SPECIES REACTIVITY | Human | | | | | | |
| PRESUMED REACTIVITY | Based on 100% sequence identity, this antibody is predicted to react with Mouse, Rat, Chicken, Sheep, Bovine and Orangutan | | | | | | |
| AMOUNT | 100 µl | | | | | | |
| CONCENTRATION | 1000 µg/ml | | | | | | |
| STORAGE/SHELF LIFE | 2 – 8° C / 1 year from date of receipt | | | | | | |
| PHYSICAL STATE | Liquid | | | | | | |
| BUFFER | Tris-citrate/phosphate buffer, pH 7 to 8 containing 0.09% Sodium Azide | | | | | | |
| ISOTYPE | IgG | | | | | | |
| ORIGIN | USA | | | | | | |
| PRODUCTION PROCEDURES | <p>Antibody was affinity purified using an epitope specific to Sin1 immobilized on solid support.</p> <p>The epitope recognized by A300-910A maps to a region between residue 470 and the C-terminus (residue 522) of human stress-activated map kinase interacting protein 1 using the numbering given in entry NP_001006618.1 (GeneID 79109).</p> <p>Immunoglobulin concentration was determined by extinction coefficient: absorbance at 280 nm of 1.4 equals 1.0 mg of IgG.</p> | | | | | | |
| APPLICATIONS | <p>Centrifuge tube to remove product from lid. Optimal working dilutions should be determined experimentally by the investigator. Prepare working dilution immediately before use.</p> <table><tr><td>Western Blot</td><td>1:2,000 – 1:10,000</td></tr><tr><td>Immunoprecipitation</td><td>2 – 5 µg/mg lysate</td></tr><tr><td>Immunohistochemistry</td><td>1:1,000 – 1:5,000. Epitope retrieval with citrate buffer pH 6.0 is recommended for FFPE tissue sections.</td></tr></table> | Western Blot | 1:2,000 – 1:10,000 | Immunoprecipitation | 2 – 5 µg/mg lysate | Immunohistochemistry | 1:1,000 – 1:5,000. Epitope retrieval with citrate buffer pH 6.0 is recommended for FFPE tissue sections. |
| Western Blot | 1:2,000 – 1:10,000 | | | | | | |
| Immunoprecipitation | 2 – 5 µg/mg lysate | | | | | | |
| Immunohistochemistry | 1:1,000 – 1:5,000. Epitope retrieval with citrate buffer pH 6.0 is recommended for FFPE tissue sections. | | | | | | |
| APPLICATION NOTES | <p>Western blot of immunoprecipitates performed using Normal Pig Serum (Cat. No. S100-020), Goat anti-Rabbit Light Chain HRP Conjugate (Cat. No. A120-113P) and 4-20% SDS-PAGE (link to IP-western blot protocol in Additional Info section below).</p> <p>Western blot of lysates performed using standard western blot reagents and 4-20% SDS-PAGE.</p> | | | | | | |
| IHC HUMAN CONTROLS | Breast Carcinoma, Ovarian Carcinoma, Prostate Carcinoma | | | | | | |
| ADDITIONAL INFO | <p>https://www.bethyl.com/product/A300-910A</p> <p>Use the link above to view SDS, a current list of citations, and other product specific information.</p> <p>IP-western blot protocol: https://www.bethyl.com/content/protocol_IP_WB</p> | | | | | | |

This document certifies that this product has met all of the quality control standards defined by Bethyl Laboratories, Inc.
Eric McIntush, PhD | Chief Scientific Officer Date: June 21, 2019



Detection of human Sin1 by western blot and immunoprecipitation. *Samples:* Whole cell lysate (50 and 15 µg for WB; 1 mg for IP, 20% of IP loaded) from HeLa cells. *Antibodies:* Affinity purified rabbit anti-Sin1 antibody A300-910A used for WB at 0.1 µg/ml (A) and 1 µg/ml (B) and used for IP at 3 µg/mg lysate (B). *Detection:* Chemiluminescence with exposure times of 7 minutes (A) and 30 seconds (B).

Detection of human Sin1 by immunohistochemistry.

Sample: FFPE section of human prostate carcinoma.

Antibody: Affinity purified rabbit anti-Sin1 (Cat. No.

A300-910A Lot1) used at a dilution of 1:1,000 (1 µg/ml).

Detection: DAB