



SZABO SCANDIC

Part of Europa Biosite

Produktinformation



Forschungsprodukte & Biochemikalien



Zellkultur & Verbrauchsmaterial



Diagnostik & molekulare Diagnostik



Laborgeräte & Service

Weitere Information auf den folgenden Seiten!
See the following pages for more information!



Lieferung & Zahlungsart

siehe unsere [Liefer- und Versandbedingungen](#)

Zuschläge

- Mindermengenzuschlag
- Trockeneiszuschlag
- Gefahrgutzuschlag
- Expressversand

SZABO-SCANDIC HandelsgmbH

Quellenstraße 110, A-1100 Wien

T. +43(0)1 489 3961-0

F. +43(0)1 489 3961-7

mail@szabo-scandic.com

www.szabo-scandic.com

[linkedin.com/company/szaboscandic](https://www.linkedin.com/company/szaboscandic) 

KIF14 Antibody

Rabbit Polyclonal

Antigen Affinity Purified	RefSeq ID	NP_055690.1
Catalog No. A300-912A	Uniprot ID	Q15058
Lot No. A300-912A-2	GeneID	9928

APPLICATIONS	WB, IP, IHC, ICC-IF
SPECIES REACTIVITY	Human
AMOUNT	100 µl
CONCENTRATION	200 µg/ml
STORAGE/SHELF LIFE	2 – 8°C / 1 year from date of receipt
PHYSICAL STATE	Liquid
BUFFER	Tris-buffered Saline containing 0.1% BSA and 0.09% Sodium Azide
ISOTYPE	IgG
ORIGIN	USA
PRODUCTION PROCEDURES	Antibody was affinity purified using an epitope specific to KIF14 immobilized on solid support.

The epitope recognized by A300-912A maps to a region between residue 1600 and the C-terminus (residue 1648) of human Kinesin Family Member 14 using the numbering given in entry NP_055690.1 (GeneID 9928).

Immunoglobulin concentration was determined by extinction coefficient: absorbance at 280 nm of 1.4 equals 1.0 mg of IgG.

APPLICATIONS Centrifuge tube to remove product from lid. Optimal working dilutions should be determined experimentally by the investigator. Prepare working dilution immediately before use.

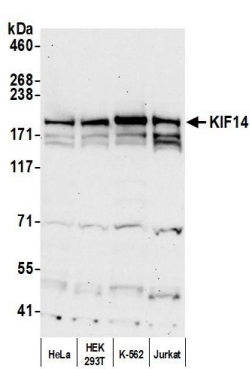
Western Blot	1:2,000 – 1:10,000
Immunoprecipitation	2 – 10 µg/mg lysate
Immunohistochemistry	1:200 – 1:1,000. Epitope retrieval with Tris-EDTA pH 9.0 is recommended for FFPE tissue sections.
Immunofluorescence (ICC)	1:200 – 1:1,000. Formaldehyde fixation is recommended. Permeabilization with Triton-X 100 is recommended for formaldehyde-fixed cells.

IHC HUMAN CONTROLS Breast Carcinoma, Colon Carcinoma, Prostate Carcinoma, HeLa Cells

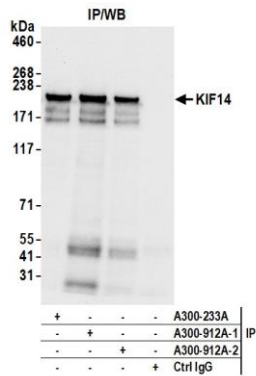
ADDITIONAL INFO <https://www.fortislifesciences.com/p/A300-912A>

Use the link above to view SDS, a current list of citations, and other product specific information.

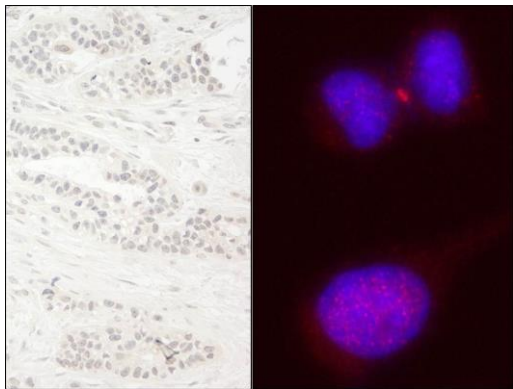
This document certifies that this product has met all of the quality control standards defined by Bethyl Laboratories, Inc.
Michael Spencer, PhD Date: September 15, 2022



Detection of human KIF14 by western blot. *Samples:* Whole cell lysate (25 µg) from HeLa, HEK293T, K-562, and Jurkat cells prepared using NETN lysis buffer. *Antibody:* Affinity purified rabbit anti-KIF14 antibody (A300-912A lot 2) used for WB at 0.1 µg/ml. *Detection:* Chemiluminescence with an exposure time of 30 seconds.



Detection of human KIF14 by western blot of immunoprecipitates. *Samples:* Whole cell lysate (1.0 mg per IP reaction; 20% of IP loaded) from HeLa cells prepared using NETN lysis buffer. *Antibodies:* Affinity purified rabbit anti-KIF14 antibody (A300-912A lot 2) used for IP at 6 µg per reaction. KIF14 was also immunoprecipitated by a previous lot of this antibody (A300-912A lot 1) and a second antibody against a different epitope of KIF14 (A300-233A). For blotting immunoprecipitated KIF14, A300-912A was used at 0.04 µg/ml. *Detection:* Chemiluminescence with an exposure time of 3 seconds.



Detection of human KIF14 by immunohistochemistry and immunocytochemistry. *Sample:* FFPE section of human breast carcinoma (left) and formaldehyde-fixed HeLa cells (right). *Antibody:* Affinity purified rabbit anti-KIF14 (Cat. No. A300-912A Lot1) used at a dilution of 1:200 (1 µg/ml) and 1:100 (2 µg/ml). *Detection:* DAB (left) and red-fluorescent goat anti-rabbit IgG highly cross-adsorbed Antibody used at a dilution of 1:100 (right).