



# SZABO SCANDIC

Part of Europa Biosite

## Produktinformation



Forschungsprodukte & Biochemikalien



Zellkultur & Verbrauchsmaterial



Diagnostik & molekulare Diagnostik



Laborgeräte & Service

Weitere Information auf den folgenden Seiten!  
See the following pages for more information!



### Lieferung & Zahlungsart

siehe unsere [Liefer- und Versandbedingungen](#)

### Zuschläge

- Mindermengenzuschlag
- Trockeneiszuschlag
- Gefahrgutzuschlag
- Expressversand

### SZABO-SCANDIC HandelsgmbH

Quellenstraße 110, A-1100 Wien

T. +43(0)1 489 3961-0

F. +43(0)1 489 3961-7

[mail@szabo-scandic.com](mailto:mail@szabo-scandic.com)

[www.szabo-scandic.com](http://www.szabo-scandic.com)

[linkedin.com/company/szaboscandic](https://www.linkedin.com/company/szaboscandic) 

# USP14 Antibody

Rabbit Polyclonal

Antigen Affinity Purified

Protein ID NP\_005142.1

Catalog No. A300-920A-T

GeneID 9097

Lot No. A300-920A-T-1

<b>APPLICATIONS</b>	WB, IP, IHC
<b>SPECIES REACTIVITY</b>	Human, Mouse
<b>PRESUMED REACTIVITY</b>	Based on 100% sequence identity, this antibody is predicted to react with Bovine
<b>AMOUNT</b>	10 µl
<b>CONCENTRATION</b>	1000 µg/ml
<b>STORAGE/SHELF LIFE</b>	2 – 8°C / 1 year from date of receipt
<b>PHYSICAL STATE</b>	Liquid
<b>BUFFER</b>	Tris-citrate/phosphate buffer, pH 7 to 8 containing 0.09% Sodium Azide
<b>ISOTYPE</b>	IgG
<b>ORIGIN</b>	USA
<b>PRODUCTION PROCEDURES</b>	Antibody was affinity purified using an epitope specific to USP14 immobilized on solid support.

The epitope recognized by A300-920A-T maps to a region between residue 450 and the C-terminus (residue 494) of human Ubiquitin Specific Peptidase 14 using the numbering given in entry NP\_005142.1 (GeneID 9097).

**APPLICATIONS** Centrifuge tube to remove product from lid. Optimal working dilutions should be determined experimentally by the investigator. Prepare working dilution immediately before use.

Western Blot 1:2,000 – 1:10,000

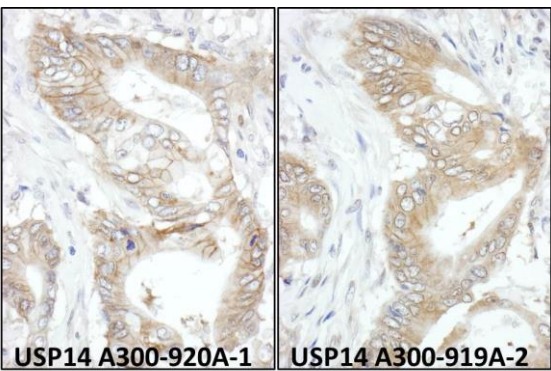
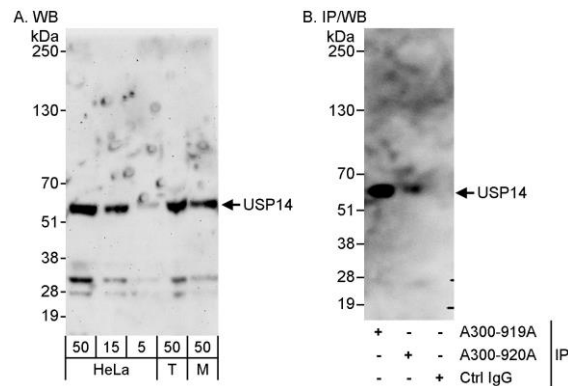
Immunoprecipitation 2 – 5 µg/mg lysate

Immunohistochemistry 1:500 – 1:2,000. Epitope retrieval with citrate buffer pH 6.0 is recommended for FFPE tissue sections.

**ADDITIONAL INFO** <https://www.bethyl.com/product/A300-920A-T>

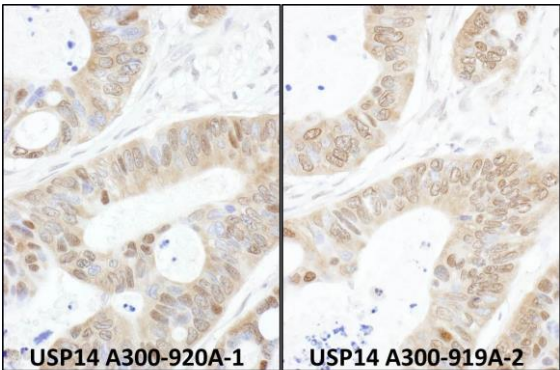
Use the link above to view SDS, a current list of citations, and other product specific information.  
IP-western blot protocol: [https://www.bethyl.com/content/protocol\\_IP\\_WB](https://www.bethyl.com/content/protocol_IP_WB)

This document certifies that this product has met all of the quality control standards defined by Bethyl Laboratories, Inc.  
Michael Spencer, PhD Date: June 6, 2022



**Detection of human and mouse USP14 by western blot (h&m) and immunoprecipitation (h).** *Samples:* Whole cell lysate from HeLa (5, 15 and 50 µg for WB; 1 mg for IP, 20% of IP loaded), HEK293T (T; 50 µg), and mouse NIH 3T3 (M; 50 µg) cells. *Antibodies:* Affinity purified rabbit anti-USP14 antibody A300-920A used for WB at 0.1 µg/ml (A) and 1.0 µg/ml (B) and used for IP at 3 µg/mg lysate (B). USP14 was also immunoprecipitated by rabbit anti-USP14 antibody A300-919A, which recognizes an upstream epitope. *Detection:* Chemiluminescence with exposure times of 3 minutes (A) and 30 seconds (B).

**Detection of human USP14 by immunohistochemistry.** *Samples:* FFPE sections of human colon carcinoma. *Antibody:* Affinity purified rabbit anti-USP14 (Cat. No. A300-920A Lot1-left and Cat. No. A300-919A Lot2-right) used at a dilution of 1:1,000 (1 µg/ml). *Detection:* DAB.



**Detection of human USP14 by immunohistochemistry.** *Samples:* FFPE sections of human ovarian carcinoma. *Antibody:* Affinity purified rabbit anti-USP14 (Cat. No. A300-920A Lot1-left and Cat. No. A300-919A Lot2-right) used at a dilution of 1:1,000 (1 µg/ml). *Detection:* DAB