



# SZABO SCANDIC

Part of Europa Biosite

## Produktinformation



Forschungsprodukte & Biochemikalien



Zellkultur & Verbrauchsmaterial



Diagnostik & molekulare Diagnostik



Laborgeräte & Service

Weitere Information auf den folgenden Seiten!  
See the following pages for more information!



### Lieferung & Zahlungsart

siehe unsere [Liefer- und Versandbedingungen](#)

### Zuschläge

- Mindermengenzuschlag
- Trockeneiszuschlag
- Gefahrgutzuschlag
- Expressversand

### SZABO-SCANDIC Handels GmbH

Quellenstraße 110, A-1100 Wien

T. +43(0)1 489 3961-0

F. +43(0)1 489 3961-7

[mail@szabo-scandic.com](mailto:mail@szabo-scandic.com)

[www.szabo-scandic.com](http://www.szabo-scandic.com)

[linkedin.com/company/szaboscandic](https://www.linkedin.com/company/szaboscandic) 

# USP37 Antibody

Rabbit Polyclonal

Antigen Affinity Purified

Protein ID NP\_065986.1

Catalog No. A300-927A-T

GeneID 57695

Lot No. A300-927A-T-2

**APPLICATIONS** WB, IP, IHC

**SPECIES REACTIVITY** Human

**AMOUNT** 10 µl

**CONCENTRATION** 200 µg/ml

**STORAGE/SHELF LIFE** 2 – 8°C / 1 year from date of receipt

**PHYSICAL STATE** Liquid

**BUFFER** Tris-buffered Saline containing 0.1% BSA and 0.09% Sodium Azide

**ISOTYPE** IgG

**ORIGIN** USA

**PRODUCTION PROCEDURES** Antibody was affinity purified using an epitope specific to USP37 immobilized on solid support.

The epitope recognized by A300-927A-T maps to a region between residue 930 and the C-terminus (residue 979) of human Ubiquitin Specific Peptidase 37 using the numbering given in entry NP\_065986.1 (GeneID 57695).

**APPLICATIONS** Centrifuge tube to remove product from lid. Optimal working dilutions should be determined experimentally by the investigator. Prepare working dilution immediately before use.

Western Blot 1:2,000 – 1:10,000

Immunoprecipitation 2 – 10 µg/mg lysate

Immunohistochemistry 1:100 to 1:500. Epitope retrieval with citrate buffer pH6.0 is recommended for FFPE tissue sections.

**ADDITIONAL INFO** <https://www.bethyl.com/product/A300-927A-T>

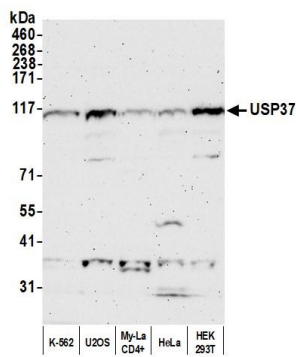
Use the link above to view SDS, a current list of citations, and other product specific information.

IP-western blot protocol: [https://www.bethyl.com/content/protocol\\_IP\\_WB](https://www.bethyl.com/content/protocol_IP_WB)

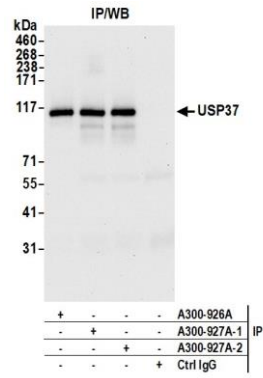
This document certifies that this product has met all of the quality control standards defined by Bethyl Laboratories, Inc.

Michael Spencer, PhD

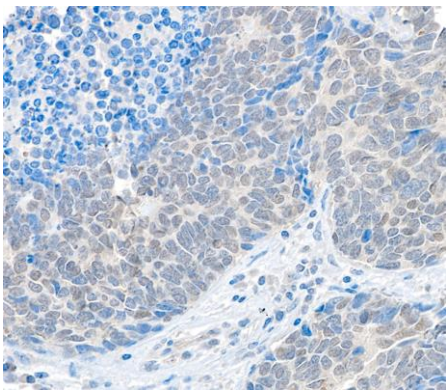
Date: June 6, 2022



**Detection of human USP37 by western blot.** *Samples:* Whole cell lysate (50 µg) from K-562, U2OS, My-La CD4+, HeLa, and HEK293T cells prepared using NETN lysis buffer. *Antibody:* Affinity purified rabbit anti-USP37 antibody (A300-927A lot 2) used for WB at 0.04 µg/ml. *Detection:* Chemiluminescence with an exposure time of 3 minutes.



**Detection of human USP37 by western blot of immunoprecipitates.** *Samples:* Whole cell lysate (1.0 mg per IP reaction; 20% of IP loaded) from HEK293T cells prepared using NETN lysis buffer. *Antibodies:* Affinity purified rabbit anti-USP37 antibody (A300-927A lot 2) used for IP at 6 µg per reaction. USP37 was also immunoprecipitated by a previous lot of this antibody (A300-927A lot 1) and a second antibody against a different epitope of USP37 (A300-926A). For blotting immunoprecipitated USP37, A300-927A was used at 0.04 µg/ml. *Detection:* Chemiluminescence with an exposure time of 10 seconds.



**Detection of human USP37 by immunohistochemistry.** *Sample:* FFPE section of human non-small cell lung cancer. *Antibody:* Affinity purified rabbit anti-USP37 (Cat. No. A300-927A Lot2) used at a dilution of 1:200 (1µg/ml). *Detection:* DAB