



SZABO SCANDIC

Part of Europa Biosite

Produktinformation



Forschungsprodukte & Biochemikalien



Zellkultur & Verbrauchsmaterial



Diagnostik & molekulare Diagnostik



Laborgeräte & Service

Weitere Information auf den folgenden Seiten!
See the following pages for more information!



Lieferung & Zahlungsart

siehe unsere [Liefer- und Versandbedingungen](#)

Zuschläge

- Mindermengenzuschlag
- Trockeneiszuschlag
- Gefahrgutzuschlag
- Expressversand

SZABO-SCANDIC Handels GmbH

Quellenstraße 110, A-1100 Wien

T. +43(0)1 489 3961-0

F. +43(0)1 489 3961-7

mail@szabo-scandic.com

www.szabo-scandic.com

[linkedin.com/company/szaboscandic](https://www.linkedin.com/company/szaboscandic)



Coronin 1 Antibody

Rabbit Polyclonal

Antigen Affinity Purified Protein ID NP_009005.1

Catalog No. A300-932A-T GenelD 11151

Lot No. A300-932A-T-1

APPLICATIONS	WB, IHC
SPECIES REACTIVITY	Human
PRESUMED REACTIVITY	Based on 100% sequence identity, this antibody is predicted to react with Bovine
AMOUNT	10 µl
CONCENTRATION	200 µg/ml
STORAGE/SHELF LIFE	2 – 8°C / 1 year from date of receipt
PHYSICAL STATE	Liquid
BUFFER	Tris-buffered Saline containing 0.1% BSA and 0.09% Sodium Azide
ISOTYPE	IgG
ORIGIN	USA
PRODUCTION PROCEDURES	Antibody was affinity purified using an epitope specific to Coronin 1 immobilized on solid support.

The epitope recognized by A300-932A-T maps to a region between residue 410 and the C-terminus (residue 461) of human Coronin 1 (Coronin, Actin Binding Protein 1A) using the numbering given in entry NP_009005.1 (GenelD 11151).

APPLICATIONS Centrifuge tube to remove product from lid. Optimal working dilutions should be determined experimentally by the investigator. Prepare working dilution immediately before use.

Western Blot 1:2,000 – 1:10,000

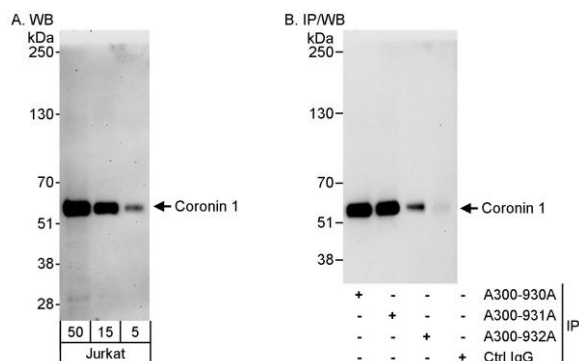
Immunoprecipitation Not recommended. Efficiency is low. Use A300-930A or A300-931A.

Immunohistochemistry 1:200 – 1:1,000. Epitope retrieval with citrate buffer pH 6.0 is recommended for FFPE tissue sections.

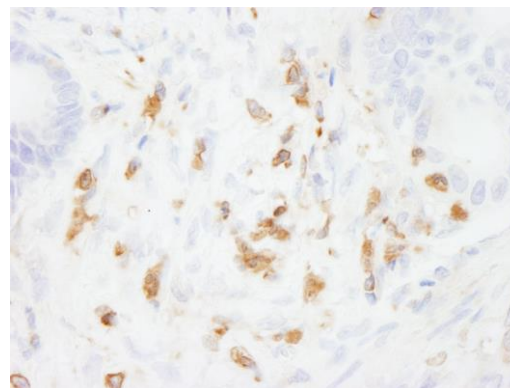
ADDITIONAL INFO <https://www.bethyl.com/product/A300-932A-T>

Use the link above to view SDS, a current list of citations, and other product specific information.

This document certifies that this product has met all of the quality control standards defined by Bethyl Laboratories, Inc.
Michael Spencer, PhD Date: June 6, 2022



Detection of human Coronin 1 by western blot and immunoprecipitation. *Samples:* Whole cell lysate (5, 15 and 50 µg for WB; 1 mg for IP, 20% of IP loaded) from Jurkat cells. *Antibodies:* Affinity purified rabbit anti-Coronin 1 antibody A300-932A used for WB at 0.04 µg/ml (A) and 0.1 µg/ml (B) and used for IP at 3 µg/mg lysate (B). Coronin 1 was also immunoprecipitated by rabbit anti-Coronin 1 antibodies A300-930A and A300-931A, which recognize upstream epitopes. *Detection:* Chemiluminescence with exposure times of 3 minutes (A) and 30 seconds (B).



Detection of human Coronin 1 by immunohistochemistry. *Sample:* FFPE section of human stomach carcinoma. *Antibody:* Affinity purified rabbit anti-Coronin 1 (Cat. No. A300-932A Lot1) used at a dilution of 1:1,000 (0.2 µg/ml). *Detection:* DAB