



SZABO SCANDIC

Part of Europa Biosite

Produktinformation



Forschungsprodukte & Biochemikalien



Zellkultur & Verbrauchsmaterial



Diagnostik & molekulare Diagnostik



Laborgeräte & Service

Weitere Information auf den folgenden Seiten!
See the following pages for more information!



Lieferung & Zahlungsart

siehe unsere [Liefer- und Versandbedingungen](#)

Zuschläge

- Mindermengenzuschlag
- Trockeneiszuschlag
- Gefahrgutzuschlag
- Expressversand

SZABO-SCANDIC HandelsgmbH

Quellenstraße 110, A-1100 Wien

T. +43(0)1 489 3961-0

F. +43(0)1 489 3961-7

mail@szabo-scandic.com

www.szabo-scandic.com

[linkedin.com/company/szaboscandic](https://www.linkedin.com/company/szaboscandic) 

USP36/DUB1 Antibody

Rabbit Polyclonal

Antigen Affinity Purified

Protein ID NP_079366.2

Catalog No. A300-940A-T

GeneID 57602

Lot No. A300-940A-T-2

APPLICATIONS WB, IP, IHC

SPECIES REACTIVITY Human

AMOUNT 10 µl

CONCENTRATION 1000 µg/ml

STORAGE/SHELF LIFE 2 – 8°C / 1 year from date of receipt

PHYSICAL STATE Liquid

BUFFER Tris-citrate/phosphate buffer, pH 7 to 8 containing 0.09% Sodium Azide

ISOTYPE IgG

ORIGIN USA

PRODUCTION PROCEDURES Antibody was affinity purified using an epitope specific to USP36/DUB1 immobilized on solid support.

The epitope recognized by A300-940A-T maps to a region between residue 1070 and the C-terminus (residue 1121) of human Ubiquitin Specific Peptidase 36 (Deubiquinating Enzyme 1) using the numbering given in entry NP_079366.2 (GeneID 57602).

APPLICATIONS Centrifuge tube to remove product from lid. Optimal working dilutions should be determined experimentally by the investigator. Prepare working dilution immediately before use.

Western Blot 1:1,000 – 1:5,000

Immunoprecipitation 2 – 10 µg/mg lysate

Immunohistochemistry 1:2,000 – 1:10,000. Epitope retrieval with Tris-EDTA pH 9.0 is recommended for FFPE tissue sections.

ADDITIONAL INFO <https://www.bethyl.com/product/A300-940A-T>

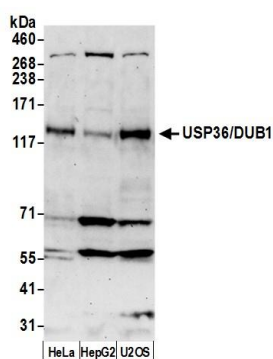
Use the link above to view SDS, a current list of citations, and other product specific information.

IP-western blot protocol: https://www.bethyl.com/content/protocol_IP_WB

This document certifies that this product has met all of the quality control standards defined by Bethyl Laboratories, Inc.

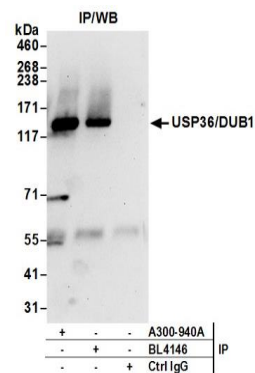
Michael Spencer, PhD

Date: June 6, 2022



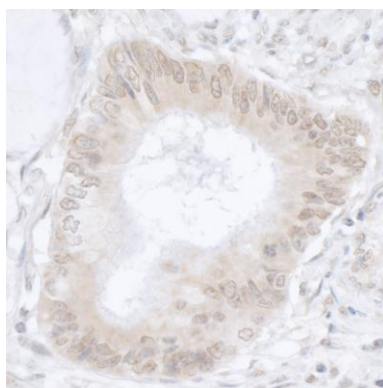
Detection of Human USP36/DUB1 by Western Blot.

Samples: Whole cell lysate (50 µg) from HeLa, Hep-G2, and U2OS cells prepared using NETN lysis buffer. **Antibody:** Affinity purified rabbit anti-USP36/DUB1 antibody A300-940A (lot A300-940A-2) used for WB at 0.4 µg/ml. **Detection:** Chemiluminescence with an exposure time of 75 seconds.



Detection of human USP36/DUB1 by western blot of immunoprecipitates.

Samples: Whole cell lysate (0.5 or 1.0 mg per IP reaction; 20% of IP loaded) from HeLa cells prepared using NETN lysis buffer. **Antibodies:** Affinity purified rabbit anti-USP36/DUB1 antibody A300-940A (lot A300-940A-2) used for IP at 6 µg per reaction. USP36/DUB1 was also immunoprecipitated by rabbit anti-USP36/DUB1 antibody BL4146. For blotting immunoprecipitated USP36/DUB1, A300-940A was used at 1 µg/ml. **Detection:** Chemiluminescence with an exposure time of 10 seconds.



Detection of human USP36/DUB1 by immunohistochemistry.

Sample: FFPE section of human colon carcinoma. **Antibody:** Affinity purified rabbit anti-USP36/DUB1 (Cat. No. A300-940A Lot 2) used at a dilution of 1:5,000 (0.2µg/ml). **Detection:** DAB