



SZABO SCANDIC

Part of Europa Biosite

Produktinformation



Forschungsprodukte & Biochemikalien



Zellkultur & Verbrauchsmaterial



Diagnostik & molekulare Diagnostik



Laborgeräte & Service

Weitere Information auf den folgenden Seiten!
See the following pages for more information!



Lieferung & Zahlungsart

siehe unsere [Liefer- und Versandbedingungen](#)

Zuschläge

- Mindermengenzuschlag
- Trockeneiszuschlag
- Gefahrgutzuschlag
- Expressversand

SZABO-SCANDIC HandelsgmbH

Quellenstraße 110, A-1100 Wien

T. +43(0)1 489 3961-0

F. +43(0)1 489 3961-7

mail@szabo-scandic.com

www.szabo-scandic.com

[linkedin.com/company/szaboscandic](https://www.linkedin.com/company/szaboscandic) 

Topo II Beta Antibody

Rabbit Polyclonal

Antigen Affinity Purified

Protein ID NP_001059.2

Catalog No. A300-950A

GeneID 7155

Lot No. A300-950A-2



APPLICATIONS WB, IP, IHC

SPECIES REACTIVITY Human, Mouse

AMOUNT 100 µl

CONCENTRATION 200 µg/ml

STORAGE/SHELF LIFE 2 – 8° C / 1 year from date of receipt

PHYSICAL STATE Liquid

BUFFER Tris-buffered Saline containing 0.1% BSA and 0.09% Sodium Azide

ISOTYPE IgG

ORIGIN USA

PRODUCTION PROCEDURES Antibody was affinity purified using an epitope specific to Topo II Beta immobilized on solid support.

The epitope recognized by A300-950A maps to a region between residue 1570 and the C-terminus (residue 1621) of human DNA Topoisomerase II Beta using the numbering given in entry NP_001059.2 (GeneID 7155).

Immunoglobulin concentration was determined by extinction coefficient: absorbance at 280 nm of 1.4 equals 1.0 mg of IgG.

APPLICATIONS Centrifuge tube to remove product from lid. Optimal working dilutions should be determined experimentally by the investigator. Prepare working dilution immediately before use.

Western Blot 1:2,000 – 1:10,000

Immunoprecipitation 2 – 10 µg/mg lysate

Immunohistochemistry 1:200 to 1:1000. Epitope retrieval with citrate buffer pH6.0 is recommended for FFPE tissue sections.

IHC HUMAN CONTROLS Ovarian Carcinoma, Small Cell Lung Cancer, Stomach Adenocarcinoma

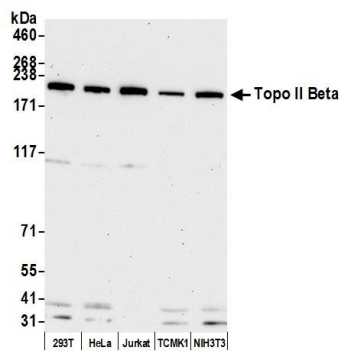
ADDITIONAL INFO <https://www.bethyl.com/product/A300-950A>

Use the link above to view SDS, a current list of citations, and other product specific information.

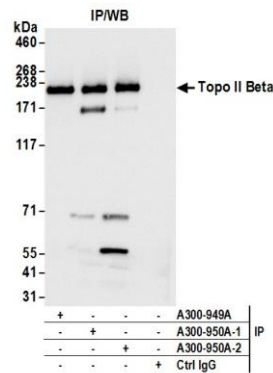
IP-western blot protocol: https://www.bethyl.com/content/protocol_IP_WB

This document certifies that this product has met all of the quality control standards defined by Bethyl Laboratories, Inc.
Eric McIntush, PhD | Chief Scientific Officer

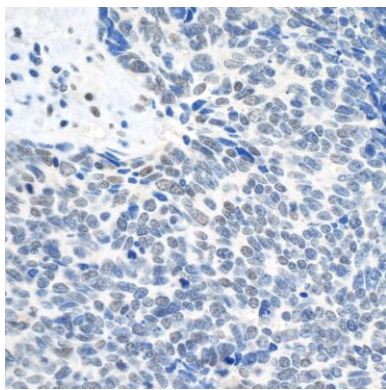
Date: May 29, 2020



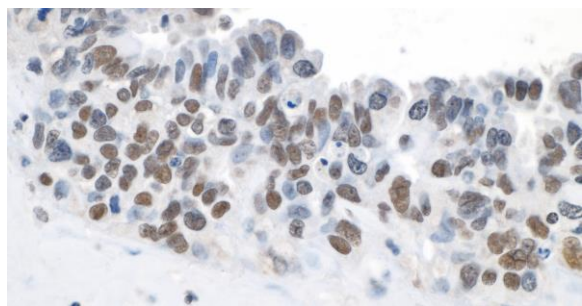
Detection of human and mouse Topo II Beta by western blot. *Samples:* Whole cell lysate (50 µg) from HEK293T, HeLa, Jurkat, TCMK-1, and NIH 3T3 cells prepared using NETN lysis buffer. *Antibody:* Affinity purified rabbit anti-Topo II Beta antibody A300-950A (lot A300-950A-2) used for WB at 0.04 µg/ml. *Detection:* Chemiluminescence with an exposure time of 30 seconds.



Detection of human Topo II Beta by western blot of immunoprecipitates. *Samples:* Whole cell lysate (1.0 mg per IP reaction; 20% of IP loaded) from HEK293T cells prepared using NETN lysis buffer. *Antibodies:* Affinity purified rabbit anti-Topo II Beta antibody A300-950A (lot A300-950A-2) used for IP at 6 µg per reaction. Topo II Beta was also immunoprecipitated by a previous lot of this antibody (lot A300-950A-1) and rabbit anti-Topo II Beta antibody A300-949A. For blotting immunoprecipitated Topo II Beta, A300-950A was used at 0.04 µg/ml. *Detection:* Chemiluminescence with an exposure time of 1 second.



Detection of human Topo II Beta by immunohistochemistry. *Sample:* FFPE section of human small cell lung cancer. *Antibody:* Affinity purified rabbit anti-Topo II Beta (Cat. No. A300-950A lot 2) used at a dilution of 1:1,000 (0.2µg/ml). *Detection:* DAB



Detection of human Topo II Beta by immunohistochemistry. *Sample:* FFPE section of human ovarian cancer. *Antibody:* Affinity purified rabbit anti-Topo II Beta (Cat. No. A300-950A lot 2) used at a dilution of 1:1,000 (0.2µg/ml). *Detection:* DAB