



# SZABO SCANDIC

Part of Europa Biosite

## Produktinformation



Forschungsprodukte & Biochemikalien



Zellkultur & Verbrauchsmaterial



Diagnostik & molekulare Diagnostik



Laborgeräte & Service

Weitere Information auf den folgenden Seiten!  
See the following pages for more information!



### Lieferung & Zahlungsart

siehe unsere [Liefer- und Versandbedingungen](#)

### Zuschläge

- Mindermengenzuschlag
- Trockeneiszuschlag
- Gefahrgutzuschlag
- Expressversand

### SZABO-SCANDIC Handels GmbH

Quellenstraße 110, A-1100 Wien

T. +43(0)1 489 3961-0

F. +43(0)1 489 3961-7

[mail@szabo-scandic.com](mailto:mail@szabo-scandic.com)

[www.szabo-scandic.com](http://www.szabo-scandic.com)

[linkedin.com/company/szaboscandic](https://www.linkedin.com/company/szaboscandic) 

# KIFC1 /MKLP2 Antibody

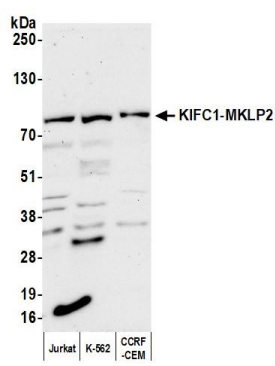
Rabbit Polyclonal

Antigen Affinity Purified	RefSeq ID	NP_002254.1
Catalog No. A300-951A	Uniprot ID	Q9BW19
Lot No. 2	GeneID	3833

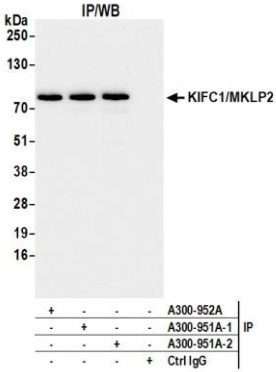
APPLICATIONS	WB, IP, IHC						
SPECIES REACTIVITY	Human						
AMOUNT	100 µl						
CONCENTRATION	1000 µg/ml						
STORAGE/SHELF LIFE	2 – 8°C / 1 year from date of receipt						
PHYSICAL STATE	Liquid						
BUFFER	Tris-citrate/phosphate buffer, pH 7 to 8 containing 0.09% Sodium Azide						
ISOTYPE	IgG						
ORIGIN	USA						
PRODUCTION PROCEDURES	<p>Antibody was affinity purified using an epitope specific to KIFC1 /MKLP2 immobilized on solid support.</p> <p>The epitope recognized by A300-951A maps to a region between residue 1 and 50 of human Kinesin Family Member C1 (Mitotic Kinesin-Like Protein 2) using the numbering given in entry NP_002254.1 (GeneID 3833).</p> <p>Immunoglobulin concentration was determined using Beer’s Law where 1mg/mL IgG has an A280 of 1.4.</p>						
APPLICATIONS	<p>Centrifuge tube to remove product from lid. Optimal working dilutions should be determined experimentally by the investigator. Prepare working dilution immediately before use.</p> <table><tr><td>Western Blot</td><td>1:2000 – 1:10,000</td></tr><tr><td>Immunoprecipitation</td><td>6 µg/mg lysate</td></tr><tr><td>Immunohistochemistry</td><td>1:1000 – 1:5000. Epitope retrieval with Tris-EDTA pH 9.0 is recommended for FFPE tissue sections.</td></tr></table>	Western Blot	1:2000 – 1:10,000	Immunoprecipitation	6 µg/mg lysate	Immunohistochemistry	1:1000 – 1:5000. Epitope retrieval with Tris-EDTA pH 9.0 is recommended for FFPE tissue sections.
Western Blot	1:2000 – 1:10,000						
Immunoprecipitation	6 µg/mg lysate						
Immunohistochemistry	1:1000 – 1:5000. Epitope retrieval with Tris-EDTA pH 9.0 is recommended for FFPE tissue sections.						
IHC HUMAN CONTROLS	Ovarian Carcinoma						
ADDITIONAL INFO	<p><a href="https://www.fortislife.com/p/A300-951A">https://www.fortislife.com/p/A300-951A</a></p> <p>Use the link above to view SDS, a current list of citations, and other product specific information.</p>						

This document certifies that this product has met all of the quality control standards defined by Bethyl Laboratories, Inc.  
Michael Spencer, PhD

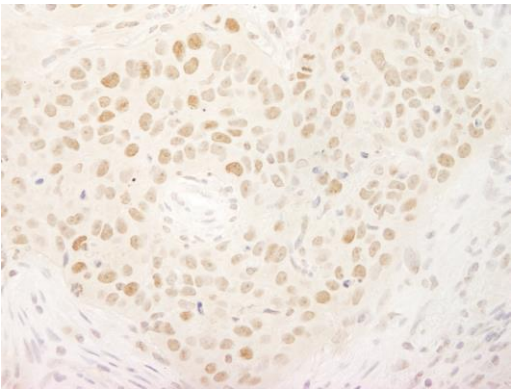
Date: July 24, 2024



**Detection of human KIFC1 /MKLP2 by western blot.**  
*Samples:* Whole cell lysate (50 µg) from Jurkat, K-562, and CCRF-CEM cells prepared using NETN lysis buffer.  
*Antibody:* Affinity purified rabbit anti-KIFC1 /MKLP2 antibody (A300-951A) used for WB at 0.4 µg/ml.  
*Detection:* Chemiluminescence with an exposure time of 30 seconds.



**Detection of human KIFC1 /MKLP2 by western blot of immunoprecipitates.** *Samples:* Whole cell lysate (1.0 mg per IP reaction; 20% of IP loaded) from Jurkat cells prepared using NETN lysis buffer. *Antibodies:* Affinity purified rabbit anti-KIFC1 /MKLP2 antibody (A300-951A) used for IP at 6 µg per reaction. KIFC1-MKLP2 was also immunoprecipitated by a previous lot of this antibody (A300-951A lot 1) and a second antibody against a different epitope of KIFC1 /MKLP2 (A300-952A). For blotting immunoprecipitated KIFC1 /MKLP2, A300-951A was used at 0.4 µg/ml. *Detection:* Chemiluminescence with an exposure time of 10 seconds.



**Detection of human KIFC1 /MKLP2 by immunohistochemistry.** *Sample:* FFPE section of human ovarian carcinoma. *Antibody:* Affinity purified rabbit anti-KIFC1 /MKLP2 (A300-951A) used at a dilution of 1:5,000 (0.2µg/ml). *Detection:* DAB