



SZABO SCANDIC

Part of Europa Biosite

Produktinformation



Forschungsprodukte & Biochemikalien



Zellkultur & Verbrauchsmaterial



Diagnostik & molekulare Diagnostik



Laborgeräte & Service

Weitere Information auf den folgenden Seiten!
See the following pages for more information!



Lieferung & Zahlungsart

siehe unsere [Liefer- und Versandbedingungen](#)

Zuschläge

- Mindermengenzuschlag
- Trockeneiszuschlag
- Gefahrgutzuschlag
- Expressversand

SZABO-SCANDIC HandelsgmbH

Quellenstraße 110, A-1100 Wien

T. +43(0)1 489 3961-0

F. +43(0)1 489 3961-7

mail@szabo-scandic.com

www.szabo-scandic.com

[linkedin.com/company/szaboscandic](https://www.linkedin.com/company/szaboscandic) 

DOT1L Antibody

Rabbit Polyclonal

Antigen Affinity Purified

Protein ID NP_115871.1

Catalog No. A300-953A-T

GeneID 84444

Lot No. A300-953A-T-1

APPLICATIONS WB, IP, IHC, ChIP-Seq

SPECIES REACTIVITY Human

AMOUNT 10 µl

CONCENTRATION 200 µg/ml

STORAGE/SHELF LIFE 2 – 8°C / 1 year from date of receipt

PHYSICAL STATE Liquid

BUFFER Tris-buffered Saline containing 0.1% BSA and 0.09% Sodium Azide

ISOTYPE IgG

ORIGIN USA

PRODUCTION PROCEDURES Antibody was affinity purified using an epitope specific to DOT1L immobilized on solid support.

The epitope recognized by A300-953A-T maps to a region between residue 1000 and 1050 of human DOT1-Like using the numbering given in entry NP_115871.1 (GeneID 84444).

APPLICATIONS

Centrifuge tube to remove product from lid. Optimal working dilutions should be determined experimentally by the investigator. Prepare working dilution immediately before use.

Western Blot 1:2,000 – 1:10,000

Immunoprecipitation 2 – 5 µg/mg lysate

Immunohistochemistry 1:200 – 1:1,000. Epitope retrieval with Tris-EDTA pH 9.0 is recommended for FFPE tissue sections.

ChIP-Seq ChIP-Seq 4 µg/30 µg chromatin

ADDITIONAL INFO

<https://www.bethyl.com/product/A300-953A-T>

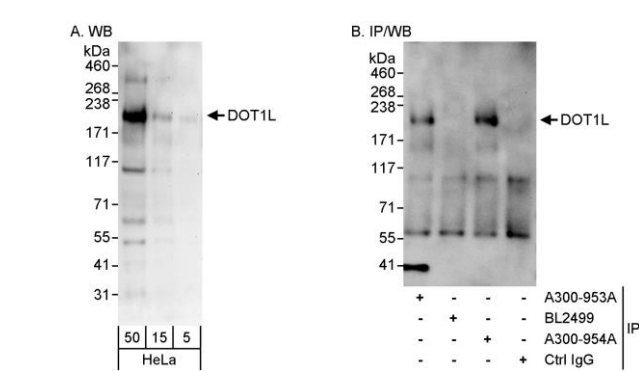
Use the link above to view SDS, a current list of citations, and other product specific information.

IP-western blot protocol: https://www.bethyl.com/content/protocol_IP_WB

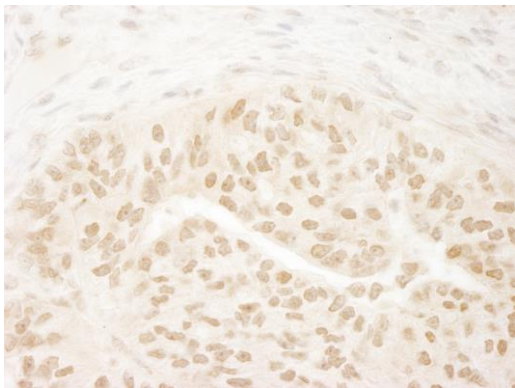
This document certifies that this product has met all of the quality control standards defined by Bethyl Laboratories, Inc.

Michael Spencer, PhD

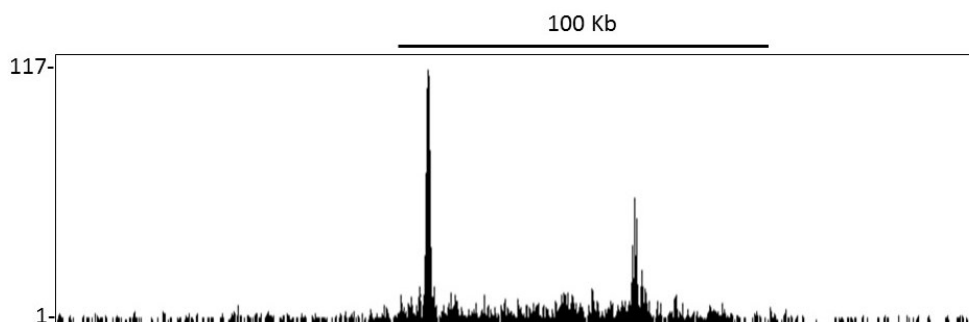
Date: June 6, 2022



Detection of human DOT1L by western blot and immunoprecipitation. *Samples:* Whole cell lysate (5, 15 and 50 µg for WB; 1 mg for IP, 20% of IP loaded) from HeLa cells. *Antibodies:* Affinity purified rabbit anti-DOT1L antibody A300-953A used for WB at 0.04 µg/ml (A) and 1 µg/ml (B) and used for IP at 3 µg/mg lysate (B). DOT1L was also immunoprecipitated by rabbit anti-DOT1L antibody A300-954A, which recognizes a downstream epitope. *Detection:* Chemiluminescence with exposure times of 3 minutes (A) and 10 seconds (B).



Detection of human DOT1L by immunohistochemistry. *Sample:* FFPE section of human lung carcinoma. *Antibody:* Affinity purified rabbit anti-DOT1L (Cat. No. A300-953A Lot1) used at a dilution of 1:200 (1 µg/ml). *Detection:* DAB



Localization of DOT1L Binding Sites by ChIP–sequencing. Chromatin from KOPN–8 cell line was immunoprecipitated with anti–DOT1L antibody A300–953A and analyzed by DNA sequencing. The figure illustrates the peak distribution of DOT1L binding within a 250 Kb region of chromosome 10 as detected using anti–DOT1L antibody A300–953A. ChIP–seq validation performed by Active Motif, Carlsbad, CA.