



# SZABO SCANDIC

Part of Europa Biosite

## Produktinformation



Forschungsprodukte & Biochemikalien



Zellkultur & Verbrauchsmaterial



Diagnostik & molekulare Diagnostik



Laborgeräte & Service

Weitere Information auf den folgenden Seiten!  
See the following pages for more information!



### Lieferung & Zahlungsart

siehe unsere [Liefer- und Versandbedingungen](#)

### Zuschläge

- Mindermengenzuschlag
- Trockeneiszuschlag
- Gefahrgutzuschlag
- Expressversand

### SZABO-SCANDIC HandelsgmbH

Quellenstraße 110, A-1100 Wien

T. +43(0)1 489 3961-0

F. +43(0)1 489 3961-7

[mail@szabo-scandic.com](mailto:mail@szabo-scandic.com)

[www.szabo-scandic.com](http://www.szabo-scandic.com)

[linkedin.com/company/szaboscandic](https://www.linkedin.com/company/szaboscandic) 

# THRAP3/TRAP150 Antibody

Rabbit Polyclonal

Antigen Affinity Purified	RefSeq ID	NP_005110.1
Catalog No. A300-956A	Uniprot ID	Q9Y2W1
Lot No. 2	GeneID	9967

<b>APPLICATIONS</b>	WB, IP, IHC
<b>SPECIES REACTIVITY</b>	Human
<b>AMOUNT</b>	100 µl
<b>CONCENTRATION</b>	200 µg/ml
<b>STORAGE/SHELF LIFE</b>	2 – 8°C / 1 year from date of receipt
<b>PHYSICAL STATE</b>	Liquid
<b>BUFFER</b>	Tris-buffered Saline containing 0.1% BSA and 0.09% Sodium Azide
<b>ISOTYPE</b>	IgG
<b>ORIGIN</b>	USA
<b>PRODUCTION PROCEDURES</b>	Antibody was affinity purified using an epitope specific to THRAP3/TRAP150 immobilized on solid support.

The epitope recognized by A300-956A maps to a region between residue 905 and the C-terminus (residue 955) of human Thyroid Hormone Receptor Associated Protein 3 (Thyroid Hormone Receptor-Associated Protein, 150 kDa) using the numbering given in entry NP\_005110.1 (GeneID 9967).

Immunoglobulin concentration was determined using Beer's Law where 1mg/mL IgG has an A280 of 1.4.

**APPLICATIONS** Centrifuge tube to remove product from lid. Optimal working dilutions should be determined experimentally by the investigator. Prepare working dilution immediately before use.

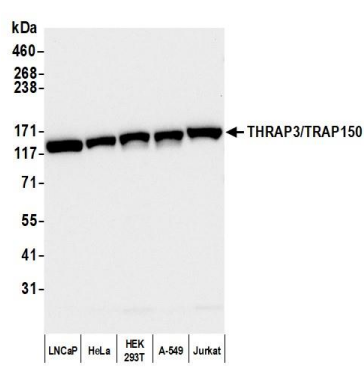
Western Blot	1:2000 – 1:10,000
Immunoprecipitation	6 µg/mg lysate
Immunohistochemistry	1:200 to 1:1000. Epitope retrieval with citrate buffer pH6.0 is recommended for FFPE tissue sections.

**IHC HUMAN CONTROLS** Breast Carcinoma, Colon Carcinoma, Metastatic Lymph Node, Non-Small Cell Lung Cancer, Ovarian Carcinoma, Prostate Carcinoma, Skin Basal Cell Carcinoma, Stomach Adenocarcinoma, Testicular Seminoma

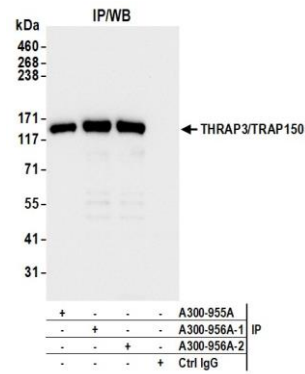
**ADDITIONAL INFO** <https://www.fortislifesciences.com/p/A300-956A>

Use the link above to view SDS, a current list of citations, and other product specific information.

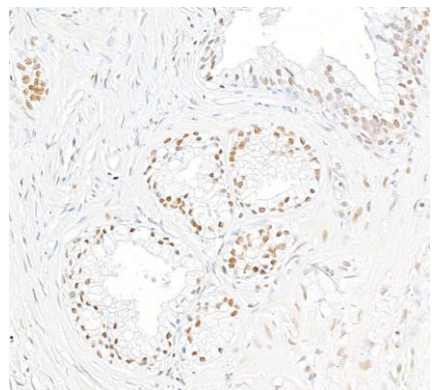
This document certifies that this product has met all of the quality control standards defined by Bethyl Laboratories, Inc.  
Michael Spencer, PhD Date: May 10, 2024



**Detection of human THRAP3/TRAP150 by western blot.**  
*Samples:* Whole cell lysate (50 µg) from LNCaP, HeLa, HEK293T, A-549, and Jurkat cells prepared using NETN lysis buffer. *Antibody:* Affinity purified rabbit anti-THRAP3/TRAP150 antibody (A300-956A lot 2) used for WB at 0.04 µg/ml. *Detection:* Chemiluminescence with an exposure time of 10 seconds.



**Detection of human THRAP3/TRAP150 by western blot of immunoprecipitates.** *Samples:* Whole cell lysate (1.0 mg per IP reaction; 20% of IP loaded) from HEK293T cells prepared using NETN lysis buffer. *Antibody:* Affinity purified rabbit anti-THRAP3/TRAP150 antibody (A300-956A lot 2) used for IP at 6 µg per reaction. THRAP3/TRAP150 was also immunoprecipitated by a previous lot of this antibody (A300-956A lot 1) and a second antibody against a different epitope of THRAP3/TRAP150 (A300-955A). For blotting immunoprecipitated THRAP3/TRAP150, A300-956A was used at 0.1 µg/ml. *Detection:* Chemiluminescence with an exposure time of 3 seconds.



**Detection of human THRAP3/TRAP150 by immunohistochemistry.** *Sample:* FFPE section of human prostate carcinoma. *Antibody:* Affinity purified rabbit anti-THRAP3/TRAP150 (A300-956A Lot 2) used at a dilution of 1:200 (1 µg/ml). *Detection:* DAB