



SZABO SCANDIC

Part of Europa Biosite

Produktinformation



Forschungsprodukte & Biochemikalien



Zellkultur & Verbrauchsmaterial



Diagnostik & molekulare Diagnostik



Laborgeräte & Service

Weitere Information auf den folgenden Seiten!
See the following pages for more information!



Lieferung & Zahlungsart

siehe unsere [Liefer- und Versandbedingungen](#)

Zuschläge

- Mindermengenzuschlag
- Trockeneiszuschlag
- Gefahrgutzuschlag
- Expressversand

SZABO-SCANDIC HandelsgmbH

Quellenstraße 110, A-1100 Wien

T. +43(0)1 489 3961-0

F. +43(0)1 489 3961-7

mail@szabo-scandic.com

www.szabo-scandic.com

[linkedin.com/company/szaboscandic](https://www.linkedin.com/company/szaboscandic) 

EFTUD2/SNRP116 Antibody

Rabbit Polyclonal

Antigen Affinity Purified Protein ID NP_004238.2

Catalog No. A300-957A-T GeneID 9343

Lot No. A300-957A-T-1

APPLICATIONS	WB, IP, IHC
SPECIES REACTIVITY	Human, Mouse
PRESUMED REACTIVITY	Based on 100% sequence identity, this antibody is predicted to react with Chicken, Bovine and Orangutan
AMOUNT	10 µl
CONCENTRATION	200 µg/ml
STORAGE/SHELF LIFE	2 – 8°C / 1 year from date of receipt
PHYSICAL STATE	Liquid
BUFFER	Tris-buffered Saline containing 0.1% BSA and 0.09% Sodium Azide
ISOTYPE	IgG
ORIGIN	USA
PRODUCTION PROCEDURES	Antibody was affinity purified using an epitope specific to EFTUD2/SNRP116 immobilized on solid support.

The epitope recognized by A300-957A-T maps to a region between residue 1 and 50 of human Elongation Factor Tu GTP Binding Domain Containing 2 (U5 snRNP-Specific Protein, 116 kD) using the numbering given in entry NP_004238.2 (GeneID 9343).

APPLICATIONS Centrifuge tube to remove product from lid. Optimal working dilutions should be determined experimentally by the investigator. Prepare working dilution immediately before use.

Western Blot 1:2,000 – 1:10,000

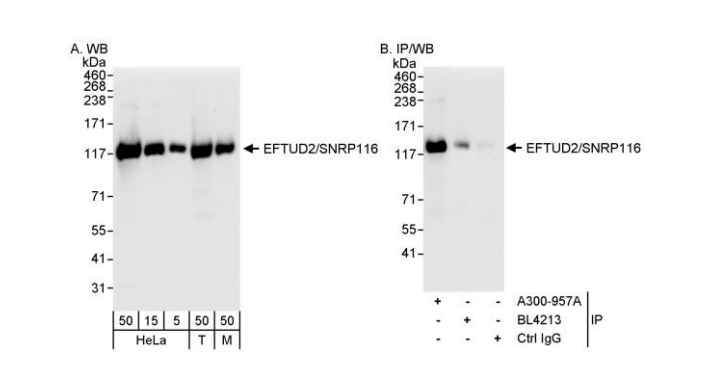
Immunoprecipitation 2 – 5 µg/mg lysate

Immunohistochemistry 1:200 – 1:1,000. Epitope retrieval with citrate buffer pH 6.0 is recommended for FFPE tissue sections.

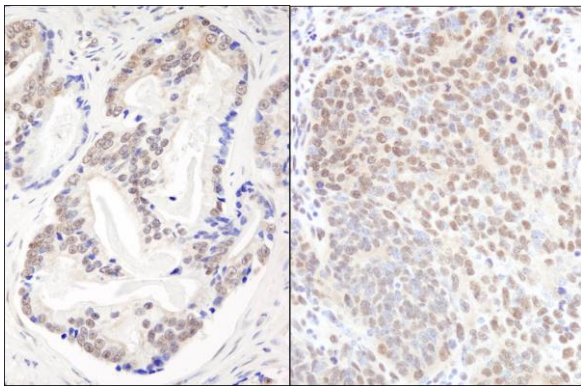
ADDITIONAL INFO <https://www.bethyl.com/product/A300-957A-T>

Use the link above to view SDS, a current list of citations, and other product specific information.
IP-western blot protocol: https://www.bethyl.com/content/protocol_IP_WB

This document certifies that this product has met all of the quality control standards defined by Bethyl Laboratories, Inc.
Michael Spencer, PhD Date: June 6, 2022



Detection of human and mouse EFTUD2/SNRP116 by western blot (h&m) and immunoprecipitation (h).
Samples: Whole cell lysate from HeLa (5, 15 and 50 μ g for WB; 1 mg for IP, 20% of IP loaded), HEK293T (T; 50 μ g) and mouse NIH 3T3 (M; 50 μ g) cells. *Antibodies:* Affinity purified rabbit anti-EFTUD2/SNRP116 antibody A300-957A used for WB at 0.04 μ g/ml (A) and 0.1 μ g/ml (B) and used for IP at 3 μ g/mg lysate (B). EFTUD2/SNRP116 was also immunoprecipitated by rabbit anti-EFTUD2/SNRP116 antibody BL4213, which recognizes a downstream epitope. *Detection:* Chemiluminescence with exposure times of 10 seconds (A and B).



Detection of human and mouse EFTUD2/SNRP116 by immunohistochemistry. *Sample:* FFPE section of human prostate carcinoma (left) and mouse teratoma (right). *Antibody:* Affinity purified rabbit anti-EFTUD2/SNRP116 (Cat. No. A300-957A Lot1) used at a dilution of 1:200 (1 μ g/ml). *Detection:* DAB