



SZABO SCANDIC

Part of Europa Biosite

Produktinformation



Forschungsprodukte & Biochemikalien



Zellkultur & Verbrauchsmaterial



Diagnostik & molekulare Diagnostik



Laborgeräte & Service

Weitere Information auf den folgenden Seiten!
See the following pages for more information!



Lieferung & Zahlungsart

siehe unsere [Liefer- und Versandbedingungen](#)

Zuschläge

- Mindermengenzuschlag
- Trockeneiszuschlag
- Gefahrgutzuschlag
- Expressversand

SZABO-SCANDIC HandelsgmbH

Quellenstraße 110, A-1100 Wien

T. +43(0)1 489 3961-0

F. +43(0)1 489 3961-7

mail@szabo-scandic.com

www.szabo-scandic.com

[linkedin.com/company/szaboscandic](https://www.linkedin.com/company/szaboscandic) 

PPP2R1A Antibody

Rabbit Polyclonal

Antigen Affinity Purified	RefSeq ID	NP_055040.2
Catalog No. A300-963A	Uniprot ID	P30153
Lot No. 3	GeneID	5518

APPLICATIONS	WB, IP
SPECIES REACTIVITY	Human, Mouse
PRESUMED REACTIVITY	Based on 100% sequence identity, this antibody is predicted to react with Bovine and Pig
AMOUNT	100 µl
CONCENTRATION	200 µg/ml
STORAGE/SHELF LIFE	2 – 8°C / 1 year from date of receipt
PHYSICAL STATE	Liquid
BUFFER	Tris-buffered Saline containing 0.1% BSA and 0.09% Sodium Azide
ISOTYPE	IgG
ORIGIN	USA
PRODUCTION PROCEDURES	Antibody was affinity purified using an epitope specific to PPP2R1A immobilized on solid support.

The epitope recognized by A300-963A maps to a region between residue 540 and the C-terminus (residue 588) of human protein phosphatase 2 (formerly 2A), regulatory subunit A (PR 65), alpha isoform using the numbering given in entry NP_055040.2 (GeneID 5518).

Immunoglobulin concentration was determined using Beer's Law where 1mg/mL IgG has an A280 of 1.4.

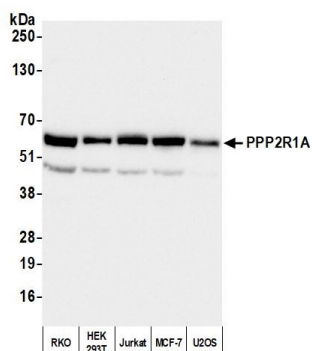
APPLICATIONS Centrifuge tube to remove product from lid. Optimal working dilutions should be determined experimentally by the investigator. Prepare working dilution immediately before use.

Western Blot	1:2000 – 1:10,000
Immunoprecipitation	6 µg/mg lysate

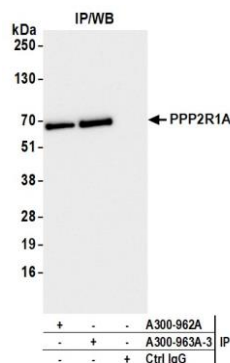
ADDITIONAL INFO <https://www.fortislifesciences.com/p/A300-963A>

Use the link above to view SDS, a current list of citations, and other product specific information.

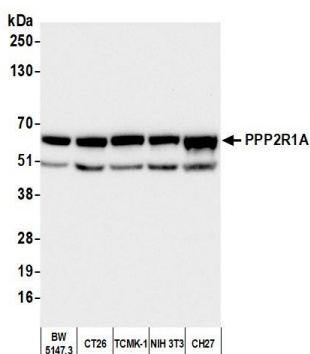
This document certifies that this product has met all of the quality control standards defined by Bethyl Laboratories, Inc.
Michael Spencer, PhD Date: February 26, 2024



Detection of human PPP2R1A by western blot. *Samples:* Whole cell lysate (25 µg) from RKO, HEK293T, Jurkat, MCF-7, and U2OS cells prepared using NETN lysis buffer. *Antibody:* Affinity purified rabbit anti-PPP2R1A antibody (A300-963A lot 3) used for WB at 0.04 µg/ml. *Detection:* Chemiluminescence with an exposure time of 10 seconds.



Detection of human PPP2R1A by western blot of immunoprecipitates. *Samples:* Whole cell lysate (1.0 mg per IP reaction; 20% of IP loaded) from Jurkat cells prepared using NETN lysis buffer. *Antibodies:* Affinity purified rabbit anti-PPP2R1A antibody (A300-963A-3 lot 1) used for IP at 6 µg per reaction. PPP2R1A was also immunoprecipitated by PPP2R1A (A300-962A). For blotting immunoprecipitated PPP2R1A, A300-963A was used at 0.1 µg/ml. *Detection:* Chemiluminescence with an exposure time of 3 seconds.



Detection of mouse PPP2R1A by western blot. *Samples:* Whole cell lysate (25 µg) from BW5147.3, CT26, TCMK-1, NIH 3T3, and CH27 cells prepared using NETN lysis buffer. *Antibody:* Affinity purified rabbit anti-PPP2R1A antibody (A300-963A lot 3) used for WB at 0.1 µg/ml. *Detection:* Chemiluminescence with an exposure time of 10 seconds.