



# SZABO SCANDIC

Part of Europa Biosite

## Produktinformation



Forschungsprodukte & Biochemikalien



Zellkultur & Verbrauchsmaterial



Diagnostik & molekulare Diagnostik



Laborgeräte & Service

Weitere Information auf den folgenden Seiten!  
See the following pages for more information!



### Lieferung & Zahlungsart

siehe unsere [Liefer- und Versandbedingungen](#)

### Zuschläge

- Mindermengenzuschlag
- Trockeneiszuschlag
- Gefahrgutzuschlag
- Expressversand

### SZABO-SCANDIC Handels GmbH

Quellenstraße 110, A-1100 Wien

T. +43(0)1 489 3961-0

F. +43(0)1 489 3961-7

[mail@szabo-scandic.com](mailto:mail@szabo-scandic.com)

[www.szabo-scandic.com](http://www.szabo-scandic.com)

[linkedin.com/company/szaboscandic](https://www.linkedin.com/company/szaboscandic) 

# ACC1 /ACC-alpha Antibody

Rabbit Polyclonal

|                           |            |             |
|---------------------------|------------|-------------|
| Antigen Affinity Purified | Protein ID | NP_942131.1 |
| Catalog No. A300-987A-T   | GeneID     | 31          |
| Lot No. A300-987A-T-1     |            |             |

|                              |   |
|------------------------------|---|
| <b>APPLICATIONS</b>          | WB  |
| <b>SPECIES REACTIVITY</b>    | Human   |
| <b>PRESUMED REACTIVITY</b>   | Based on 100% sequence identity, this antibody is predicted to react with Mouse, Rat, Sheep and Bovine    |
| <b>AMOUNT</b>                | 10 µl   |
| <b>CONCENTRATION</b>         | 1000 µg/ml  |
| <b>STORAGE/SHELF LIFE</b>    | 2 – 8°C / 1 year from date of receipt   |
| <b>PHYSICAL STATE</b>        | Liquid  |
| <b>BUFFER</b>                | Tris-citrate/phosphate buffer, pH 7 to 8 containing 0.09% Sodium Azide                                    |
| <b>ISOTYPE</b>               | IgG   |
| <b>ORIGIN</b>                | USA   |
| <b>PRODUCTION PROCEDURES</b> | Antibody was affinity purified using an epitope specific to ACC1 /ACC-alpha immobilized on solid support. |

The epitope recognized by A300-987A-T maps to a region between residue 2333 and the C-terminus (residue 2383) of human acetyl-Coenzyme A carboxylase alpha using the numbering given in entry NP\_942131.1 (GeneID 31).

**APPLICATIONS** Centrifuge tube to remove product from lid. Optimal working dilutions should be determined experimentally by the investigator. Prepare working dilution immediately before use.

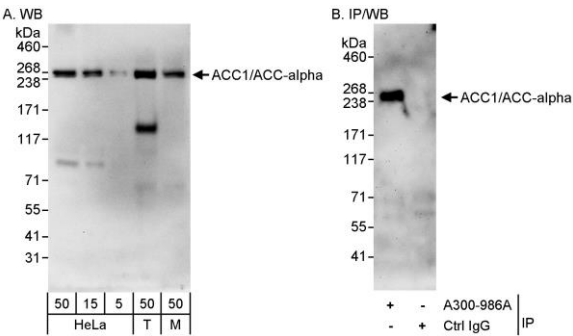
Western Blot 1:2,000 – 1:10,000

Immunoprecipitation Not recommended. Use rabbit anti-ACC1 /ACC-alpha antibody A300-986A.

**ADDITIONAL INFO** <https://www.bethyl.com/product/A300-987A-T>

Use the link above to view SDS, a current list of citations, and other product specific information.

This document certifies that this product has met all of the quality control standards defined by Bethyl Laboratories, Inc.  
Michael Spencer, PhD Date: June 6, 2022



**Detection of human and mouse ACC1/ACC-alpha by western blot (h&m) and immunoprecipitation (h).**  
*Samples:* Whole cell lysate from HeLa (5, 15 and 50 µg for WB; 1 mg for IP, 20% of IP loaded), HEK293T (T; 50 µg) and mouse NIH 3T3 (M; 50 µg) cells. *Antibodies:* Affinity purified rabbit anti-ACC1/ACC-alpha antibody A300-987A used for WB at 0.1 µg/ml (A and B). ACC1/ACC-alpha was immunoprecipitated by rabbit anti-ACC1/ACC-alpha antibody A300-986A, which recognizes an upstream epitope. *Detection:* Chemiluminescence with exposure times of 3 minutes (A and B).