



SZABO SCANDIC

Part of Europa Biosite

Produktinformation



Forschungsprodukte & Biochemikalien



Zellkultur & Verbrauchsmaterial



Diagnostik & molekulare Diagnostik



Laborgeräte & Service

Weitere Information auf den folgenden Seiten!
See the following pages for more information!



Lieferung & Zahlungsart

siehe unsere [Liefer- und Versandbedingungen](#)

Zuschläge

- Mindermengenzuschlag
- Trockeneiszuschlag
- Gefahrgutzuschlag
- Expressversand

SZABO-SCANDIC HandelsgmbH

Quellenstraße 110, A-1100 Wien

T. +43(0)1 489 3961-0

F. +43(0)1 489 3961-7

mail@szabo-scandic.com

www.szabo-scandic.com

[linkedin.com/company/szaboscandic](https://www.linkedin.com/company/szaboscandic) 

SF3b155/SAP155 Antibody

Rabbit Polyclonal

Antigen Affinity Purified	RefSeq ID	NP_036565.2
Catalog No. A300-996A-T	Uniprot ID	O75533
Lot No. 2	GeneID	23451

APPLICATIONS	WB, IP
SPECIES REACTIVITY	Human
PRESUMED REACTIVITY	Based on 100% sequence identity, this antibody is predicted to react with Mouse
AMOUNT	10 µl
CONCENTRATION	200 µg/ml
STORAGE/SHELF LIFE	2 – 8°C / 1 year from date of receipt
PHYSICAL STATE	Liquid
BUFFER	Tris-buffered Saline containing 0.1% BSA and 0.09% Sodium Azide
ISOTYPE	IgG
ORIGIN	USA
PRODUCTION PROCEDURES	Antibody was affinity purified using an epitope specific to SF3b155/SAP155 immobilized on solid support.

The epitope recognized by A300-996A-T maps to a region between residue 100 and 150 of human splicing factor 3b, subunit 1, 155kDa using the numbering given in entry NP_036565.2 (GeneID 23451).

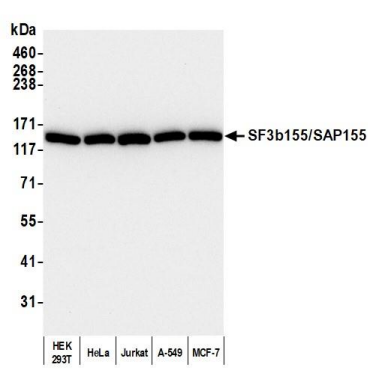
APPLICATIONS Centrifuge tube to remove product from lid. Optimal working dilutions should be determined experimentally by the investigator. Prepare working dilution immediately before use.

Western Blot	1:2,000 – 1:10,000
Immunoprecipitation	2 – 10 µg/mg lysate

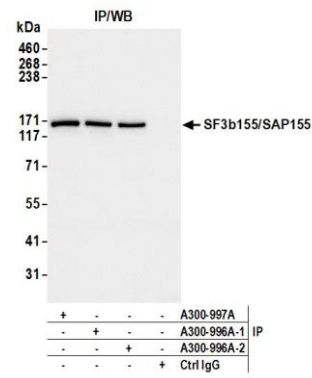
ADDITIONAL INFO <https://www.fortislifesciences.com/p/A300-996A-T>

Use the link above to view SDS, a current list of citations, and other product specific information.

This document certifies that this product has met all of the quality control standards defined by Bethyl Laboratories, Inc.
Michael Spencer, PhD Date: April 19, 2023



Detection of human SF3b155/SAP155 by western blot.
Samples: Whole cell lysate (50 µg) from HEK293T, HeLa, Jurkat, A-549, and MCF-7 cells prepared using NETN lysis buffer. *Antibody:* Affinity purified rabbit anti-SF3b155/SAP155 antibody (A300-996A lot 2) used for WB at 0.04 µg/ml. *Detection:* Chemiluminescence with an exposure time of 10 second.



Detection of human SF3b155/SAP155 by western blot of immunoprecipitates. *Samples:* Whole cell lysate (1 mg per IP reaction; 10% of IP loaded) from HEK293T cells prepared using NETN lysis buffer. *Antibodies:* Affinity purified rabbit anti-SF3b155/SAP155 antibody (A300-996A lot 2) used for IP at 6 µg per reaction. SF3b155/SAP155 was also immunoprecipitated by a previous lot of this antibody (A300-996A lot 1) and a second antibody against a different epitope of SF3b155/SAP155 (A300-997A). For blotting immunoprecipitated SF3b155/SAP155, A300-996A was used at 0.04 µg/ml. *Detection:* Chemiluminescence with