



SZABO SCANDIC

Part of Europa Biosite

Produktinformation



Forschungsprodukte & Biochemikalien



Zellkultur & Verbrauchsmaterial



Diagnostik & molekulare Diagnostik



Laborgeräte & Service

Weitere Information auf den folgenden Seiten!
See the following pages for more information!



Lieferung & Zahlungsart

siehe unsere [Liefer- und Versandbedingungen](#)

Zuschläge

- Mindermengenzuschlag
- Trockeneiszuschlag
- Gefahrgutzuschlag
- Expressversand

SZABO-SCANDIC Handels GmbH

Quellenstraße 110, A-1100 Wien

T. +43(0)1 489 3961-0

F. +43(0)1 489 3961-7

mail@szabo-scandic.com

www.szabo-scandic.com

[linkedin.com/company/szaboscandic](https://www.linkedin.com/company/szaboscandic)



Periplakin/PPL Antibody

Rabbit Polyclonal

Antigen Affinity Purified Protein ID NP_002696.3

Catalog No. A301-005A-T GeneID 5493

Lot No. A301-005A-T-1

APPLICATIONS WB, IP

SPECIES REACTIVITY Human, Mouse, Rat

AMOUNT 10 µl

CONCENTRATION 200 µg/ml

STORAGE/SHELF LIFE 2 – 8°C / 1 year from date of receipt

PHYSICAL STATE Liquid

BUFFER Tris-buffered Saline containing 0.1% BSA and 0.09% Sodium Azide

ISOTYPE IgG

ORIGIN USA

PRODUCTION PROCEDURES Antibody was affinity purified using an epitope specific to Periplakin/PPL immobilized on solid support.

The epitope recognized by A301-005A-T maps to a region between residue 1150 and 1200 of human periplakin using the numbering given in entry NP_002696.3 (GeneID 5493).

APPLICATIONS Centrifuge tube to remove product from lid. Optimal working dilutions should be determined experimentally by the investigator. Prepare working dilution immediately before use.

Western Blot 1:2,000 – 1:10,000

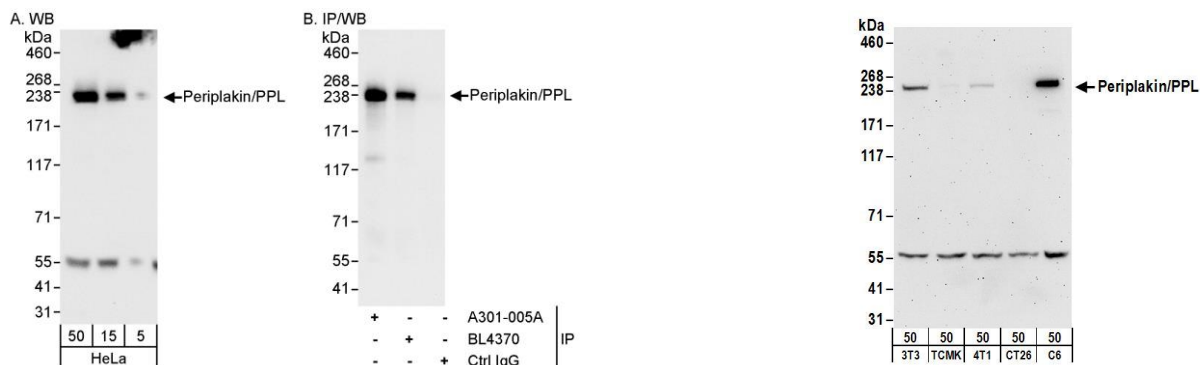
Immunoprecipitation 2 – 5 µg/mg lysate

ADDITIONAL INFO <https://www.bethyl.com/product/A301-005A-T>

Use the link above to view SDS, a current list of citations, and other product specific information.

IP-western blot protocol: https://www.bethyl.com/content/protocol_IP_WB

This document certifies that this product has met all of the quality control standards defined by Bethyl Laboratories, Inc.
Michael Spencer, PhD Date: June 6, 2022



Detection of human Periplakin/PPL by western blot and immunoprecipitation. *Samples:* Whole cell lysate (5, 15 and 50 µg for WB; 1 mg for IP, 20% of IP loaded) from HeLa cells. *Antibody:* Affinity purified rabbit anti-Periplakin/PPL antibody A301-005A used for WB at 0.04 µg/ml (A) and 1 µg/ml (B) and used for IP at 3 µg/mg lysate (B). Periplakin/PPL was also immunoprecipitated by rabbit anti-Periplakin/PPL antibody BL4370, which recognizes an upstream epitope. *Detection:* Chemiluminescence with exposure times of 10 seconds (A and B).

Detection of mouse and rat Periplakin/PPL by western blot. *Samples:* Whole cell lysate (50 µg) from NIH 3T3, TCMK-1, 4T1, CT26.WT, and rat C6 cells. *Antibodies:* Affinity purified rabbit anti-Periplakin/PPL antibody A301-005A (lot A301-005A-1) used for WB at 0.1 µg/ml. *Detection:* Chemiluminescence with an exposure time of 3 minutes.